

Release Notes

PROIV Version 10.400

Spring 2022 Maintenance Release



PROIV is a registered trademark of PRO IV Technology LLC.

Acrobat Reader is a registered trademark of Adobe Systems Incorporated.

AIX is a registered trademark of IBM.

IBM Informix C-ISAM is a registered trademark of IBM Informix.

Firefox is a registered trademark of the Mozilla Foundation.

Linux is a registered trademark of Linux Foundation.

Microsoft, Microsoft Windows, MS Windows, Microsoft Internet Explorer, Microsoft Windows Server, Microsoft Windows 7, Microsoft Windows 8, Microsoft Windows 10, Microsoft Word and MS Word are registered trademarks of Microsoft Corporation.

Sun Solaris, Java and Oracle are registered trademarks of Oracle Corporation.

UNIX is a registered trademark of X/OPEN Group Limited.

All marks and product names referred to in this document are trademarks or registered trademarks of their respective owners.

Internet: <http://www.proiv.com> or <https://support.proiv.com>

Email: support@proiv.com

© 2022 Zellis Holdings Limited.

No part of this document may be reproduced, transmitted, adapted, stored in any retrieval system or translated into any language in any form without the prior written permission of PROIV Technology LLC.

Zellis is the trading name of Zellis Holdings Limited and its associated companies, 740 Waterside Drive, Aztec West, Almondsbury, Bristol BS32 4UF, UNITED KINGDOM. Company registered number: 10975623, place of registration: England & Wales.

Document Control Information

Document Information

	INFORMATION
Document Id	V10.400_RN
Document Owner	Zellis Holdings Ltd.
Issued	Spring 2022
Last Saved Date	24 February 2022
File Name	PROIVv10.400 _ReleaseNotes

Document History

VERSION	ISSUE DATE	CHANGES
10.400	February 2022	Spring 2022 Maintenance Release.
10.400	February 2022	Added known issue requiring regen of stub functions following upgrade to 10.400
10.400	January 2022	Limited Early Access Preview Release of 10.400
10.300GA	January 2022	Additional patch for Intermittent Application Connector network issues on Solaris platforms
10.300GA	January 2022	Patch for Log4j2 CVEs
10.300GA	October 2021	10.300 Final Production version
10.300	Autumn 2021	Maintenance release rolling up previous defect fixes and new functionality
10.202	June 2021	Second service release of 10.200
10.201	April 2021	Added fix list for service release
10.200	Feb 2021	Maintenance release rolling up previous defect fixes and new functionality
10.101	Dec 2020	Second service release of version 10.0
10.100	Oct 2020	First service release of version 10.0
10.00	Sep 2020	First release of PROIV version 10.0

Contents

1	Introduction	7
1.1	Document Structure	7
1.2	Upgrading Your Application	7
1.2.1	Upgrading from Version 9 to Version 10.400	7
1.2.2	Upgrading from Previous Version 10 Releases to Version 10.400	7
1.3	End of Life Notices	7
2	System Requirements and Supported Platforms	9
2.1	MFC Client / Forms Designer Platforms	10
3	Getting Started with Version 10	11
3.1	New Features 10.400	11
3.1.1	Demo Refresh for LiteClient	11
3.1.2	Support for Java 11 from version 10.400	11
3.1.3	Project and Operator Import/Export tool	12
3.1.4	Open Client Server Springboot resource compliant	12
3.1.5	Unix Task server in Dashboard	12
3.2	New Features 10.300	12
3.2.1	Connection to PROIV Virtual Machine using SSH (UNIX only)	13
3.3	New Features 10.200	13
3.4	New Features 10.00	13
3.5	Installation Differences	14
3.6	Co-existence with earlier versions of PROIV	14
3.6.1	Windows Platforms	14

3.6.2	Unix Platforms.....	14
4	Component specific Information.....	15
4.1	Client Connector.....	15
4.1.1	Aurora.....	15
4.1.1.1	URL To Access Aurora	15
4.1.1.2	Browser Security when using Aurora and the Open Client.....	15
4.2	Application Connector.....	15
4.3	Analytics	15
4.4	Licensing	15
4.5	Dashboard.....	15
5	Platform and Database specific Information	16
5.1	64-bit Linux.....	16
5.1.1	Supported Java Runtime Environments.....	16
5.1.2	PostgreSQL.....	16
5.1.3	Oracle.....	16
5.1.4	SQL Server	17
5.2	Solaris.....	17
5.2.1	Supported Java Runtime Environments.....	18
5.2.2	Oracle.....	18
5.3	AIX.....	18
5.3.1	Supported Java Runtime Environments.....	18
5.3.2	Oracle.....	19
5.4	64-bit Windows.....	19

5.4.1	Supported Java Runtime Environments.....	19
5.4.2	PostgreSQL.....	19
5.5	Operating System Authentication to connect PROIV with Oracle database	19
5.6	File System Support.....	20
6	Issues.....	21
6.1	Resolved Issues for v10.400.41 Maintenance Release	21
6.2	Resolved Issues for v10.300.48 GA Release.....	21
6.3	Resolved Issues for v10.300.46 GA Release.....	22
6.4	Resolved Issues for v10.300.36 GA Release.....	22
6.5	Resolved Issues for v10.300.28 Maintenance Release	22
6.6	Resolved Issues for v10.202.10 Service Release.....	23
6.7	Resolved Issues for v10.201.11 Service Release.....	23
6.8	Resolved Issues for v10.200.59 Maintenance Release	24
6.9	Resolved Issues for v10.101.3 Service Release.....	25
6.10	Resolved Issues for v10.100.11 Service Release.....	25
6.11	Resolved Issues for v10.00 Major Release	25
6.12	Known Issues	26

1 Introduction

1.1 Document Structure

- Section 2 – Supported Platforms and Databases
- Section 3 – Getting Started with Version 10.0
- Section 4 – Component Specific Information
- Section 5 – Platform and Database Specific Information
- Section 6 – Issues

1.2 Upgrading Your Application

1.2.1 Upgrading from Version 9 to Version 10.400

PROIV version 10 is not gen compatible with any previous versions of PROIV. A mandatory Regen of all code is required when moving to PROIV version 10. You are required to make a clean install of version 10 in a new directory, export your application source code from your version 9 installation, import into version 10 and then perform a rebuild of the application. Additionally, all existing set up options will need to be reconfigured using the PROIV Dashboard.

1.2.2 Upgrading from Previous Version 10 Releases to Version 10.400

PROIV version 10.400 is gen compatible with all previous version 10 releases. A Regen of code is not mandatory; however, it is recommended that you take a backup of your boots folder; export your application source code and import into v10.400 and then perform a regen of the application. All existing set up options will remain configured and defaults for new options will be added to the dashboard and configuration files during the upgrade process. Note: If upgrading from a previous Preview Release of 10.400 a clean install is recommended as per upgrading from version 9 releases.

If you have not modified the PROIV Developer stubs then you are also required to manually rebuild them.

1.3 End of Life Notices

In addition to end of life notice posted with PROIV Version 9, the following components, platforms and databases are withdrawn from Version 10.

Platforms:

- RedHat Enterprise Linux version 6 and Centos Linux version 8.
- Oracle Solaris 10 Operating System.

- Windows 8 (All versions)
- Windows Server 2012 (all versions)

Components:

- The Performance Monitor functionality (PPM) has been removed

Databases:

- PostgreSQL 9.5 and 9.6
- MySQL
- Oracle 12c

Browsers:

- Firefox (all versions)
- Internet Explorer (all versions)

2 System Requirements and Supported Platforms

This section lists the currently supported operating environments for PROIV and supersedes all other documents

The following table provides details about the compatibility of system requirements, platforms, databases and browsers for PROIV v10.400 components. For the installation process, refer to PROIV v10 (10.400 update) Installation guide.

PROIV Version 10.400 Server Supported Platforms							
Platform				Database Interfaces			
				Oracle	SQL Server	PostgreSQL	C-ISAM
OS Name	Arch	Min OS	Max OS	18c 19c 21c	2016 thru 2019 Azure SQL	10 thru 14	7.26
Windows Server	64-bit	2016	2019	✓	✓	✓	
Windows Workstation	64-bit	10	10	✓	✓	✓	
Redhat Enterprise Linux	64-bit x64	7	8	✓	✓	✓	✓
AIX	Power5+	AIX7.1 TL5 SP2	AIX7.1 TL5 SP5	✓			✓
Solaris	SPARC 64 Bit	Solaris 11	Solaris 11	✓			✓

Notes

1. PROIV with SQL Server on Linux has very specific software requirements, it requires a minimum of unixODBC 2.3.7 and the Microsoft SQL Server Linux version 17 driver commonly known as msodbcsql17.
2. Support is provided for SQL Server 2017 running on Linux and SQL Server 2016, 2018, 2019 running on Windows
3. Support for Oracle databases and Operating system combinations is in line with Oracle's stated certifications as of the release date of this document.
4. Windows Server 2012; all versions are end of life on 10th October 2023 and will not be supported beyond this date. Windows Server 2012 may function but is not tested as part of this release
5. Centos 8 support is ending on 31 Dec 2021. Centos Stream 8 is not supported.
6. In order to support SSL v1.1.1 on the Sun platforms a minimum Operating System of Solaris 11.4 is required

PROIV Version 10.400 Supported Client / Browser Platforms			
Platform	Browser		
OS Name	MFC Client	Microsoft Edge	Google Chrome
Windows 10	✓	✓	✓
Windows 2016	✓	✓	✓
Windows 2019	✓	✓	✓

Notes

1. Google Chrome is tested on the latest production releases only, pre-production releases are not supported.
2. Only Chromium Edge is supported, legacy versions of Edge are not supported
3. Windows Server 2012; all versions are end of life on 10th October 2023 and will not be supported beyond this date. Windows Server 2012 may function but is not tested as part of this release

2.1 MFC Client / Forms Designer Platforms

The MFC Client and Forms Designer are 32-bit applications which are compatible with the Windows 8.1 and 10 operating systems. Whilst the installation may be successful on other versions of Microsoft Windows, they are not supported platforms and are not tested; Zellis will not accept any fault reports or support issues on non-supported platforms.

Version 9.4 introduced a change to the way the MFC Client responded to the return key when focus was on a dynamic icon. If you wish to use the previous behaviour a new option has been added to the General Settings for the application in v9.41 onwards called "Hotspots action on CR" which will need to be checked to get the previous behaviour.

3 Getting Started with Version 10

3.1 New Features 10.400

The following features are new to this version.

- Demo Refresh for LiteClient
- Support for Java 11
- Project and Operator Import/Export tool
- OpenClient Server SpringBoot resource compliant
- Task Server support in dashboard

3.1.1 Demo Refresh for LiteClient

The Demo functions on the LiteClient provide working examples of the rich functionality that is available to use in this Client. The functionality that is leveraged as part of this demo includes.

- Fluid grid
- Paging area enhancements
- Tethering of static objects
- Paging group headings
- Paging record action controls
- Page quick step / numbering controls
- Paging column sort
- Combo box enhancements
- Side Panel

Further information regarding each of these features can be found in the help documentation.

3.1.2 Support for Java 11 from version 10.400

PROIV on Windows and Linux is supplied with the Microsoft Java Runtime Environment (JRE) version 11.

The Solaris and AIX distributions contain no bundled JRE and you are required to provide your own prior to installation.

Note: As a result of the change to Java 11 the configuration setting of JRE home in the dashboard has been removed in favour of the Java Home setting which is now used to search for the JRE. Both the JRE directory under Java Home and the Java home directory are searched for a JRE respectively.

Note: Java 11 does not include integrated fonts so additional libraries will be required to provide support for fonts available on the system. The following article details the issue and the required libraries on various operating systems:

<https://blog.adoptopenjdk.net/2021/01/prerequisites-for-font-support-in-adoptopenjdk/>

3.1.3 Project and Operator Import/Export tool

This feature allows the import and export of PROIV project(s) and Operators. The new option "Profile Export" is located in the "Tools" section of the Developer "Administration suite".

When a Project export is selected from the drop-down the file will contain all the attributes associated with a PROIV project in JSON format, with an extension of p4pr. Likewise, these individual p4pr files will be imported by the JSON "Profile Import" process if selected.

When an Operator export is selected from the drop-down the file will contain all the attributes associated with a PROIV operator(s) in JSON format, with an extension of p4op. Likewise, these individual p4op files will be imported by the JSON "Profile Import" process if selected. Note, the project associated with the operator must be present before importing.

3.1.4 Open Client Server Springboot resource compliant

The Open Client Server element of Client Connector has been updated such that if deployed in a Springboot application resources will be accessed correctly.

3.1.5 Unix Task server in Dashboard

The Unix task server (PROIV kernel running in server mode on Unix) has been added into the dashboard. A clean install of version 10.400 and above will now create gateway connections in network mode rather than the previous process mode.

3.2 New Features 10.300

The following features are new to this version.

- Non-root install on UNIX operating systems (See Installation Guide)
- Local Service account installs on Windows operating systems (See Installation Guide)
- Tethering of User Interface objects to Paging Areas and pop-up or frame windows in Lite Client
- Addition of UI and command line options for Import/Export of PROIV Operators
- Option to connect to PROIV Virtual Machine using SSH
- Support for HTTP PATCH method
- Import and Export of RESTful Web Services configurations in the PROIV Dashboard
- Import and Export of PROIV Data Dictionary objects

3.2.1 Connection to PROIV Virtual Machine using SSH (UNIX only)

From 10.300 onwards; it is possible to configure a Virtual Machine connection from OpenClient or LiteClient to a UNIX server to use the SSH protocol rather than Telnet. An SSH Daemon needs to be installed and running on the server with OpenSSL version 1.1.1 or higher. For Sun Solaris operating systems OpenSSL 1.1.1 requires Solaris 11.4 as a minimum version.

To configure the connection mode the VM connection definition needs to be changed in the Virtual Machine Connections of the Client Connector settings within the PROIV Dashboard. Choose the VM connection to be changed the open the Protocol drop down and select one of the following three options and configure accordingly:

- Telnet
- SSH password authentication
 - Username / password authentication, enter a username and password into the connection definition.
- SSH key authentication
 - SSH public / private key authentication, enter the username and the associated public and private keys, there is an option to enforce strict host key checking which means only connect to hosts with keys stored in the known hosts file. (refer to your system administrator for details)

The operational model is fundamentally the same as the Telnet one in that once a connection is established the command to run PROIV is executed and the session begins.

Note: SSH Connections are not supported in Windows and will not appear in the Dashboard on Windows installations.

3.3 New Features 10.200

The following features are new to this version.

- Improved synchronisation between the PROIV Virtual Machine and the Open Client Server utilising the Web Socket transport protocol.
- Styling of Lite Client based on the Zellis Design System (ZDS).
- Improved handling of Paging Header objects

3.4 New Features 10.00

The following features are new to this version.

- PROIV Docker container based on Alpine Linux (on request)
- Unix Task Server
- Improved Lite Client

3.5 Installation Differences

There are no differences between installation of PROIV version 9 and 10.

3.6 Co-existence with earlier versions of PROIV

3.6.1 Windows Platforms

With the exception of the MFC Client application, version 10 can coexist with Version 9 on the same operating system instance; the servers utilize different listening ports. PRO-ISAM locks will also be shared between versions, however it is important to ensure that file definitions match otherwise there will be unexpected behaviour.

3.6.2 Unix Platforms

You can install PROIV Version 10 on the same system as PROIV Version 9.

4 Component specific Information

4.1 Client Connector

4.1.1 Aurora

4.1.1.1 URL To Access Aurora

The URL to access Aurora depends on the port number provided during the installation of PROIV. The default port number is 10804 and the full URL is:

<http://<host>:10804/base-default/aurora>

Where <host> is the fully qualified domain name of the server on which you have installed PROIV.

4.1.1.2 Browser Security when using Aurora and the Open Client

Changes in browser security mean that cookies with the same name cannot be used in both HTTPS and HTTP requests. This means that if you have a HTTPS Aurora session and you try to open a HTTP Open Client session then the Open Client session will fail with a 404 error. In order to use both Aurora and Open Client in the same browser they must both use the same protocol either both HTTPS or both HTTP.

4.2 Application Connector

Application Connector has no differences from version 9

4.3 Analytics

From version 10.400 the performance monitor has been removed from the Analytics dashboard module.

4.4 Licensing

Licensing has no differences from version 9

4.5 Dashboard

The Dashboard (System Services) has no differences from version 9

5 Platform and Database specific Information

Note: Prior to upgrading PROIV Server software on any platform it is essential that all users and Web Services are disconnected from the system to prevent various system locks from blocking the installation of essential components during the upgrade process. This includes connections from the Windows Client, Open Client and Lite Client. Any system that connects via SOAP or RESTful Web Services should also be temporarily disabled.

5.1 64-bit Linux

This release is supported on Linux operating systems as per the supported platforms section above. It is very important that the operating system has all vendor-supplied patches installed.

5.1.1 Security Enhanced Linux (SELinux)

This version of the Linux operating system is not currently supported, see the Known Issues in Section 6.

5.1.2 Supported Java Runtime Environments

PROIV on 64-bit Linux (glibc) is bundled with the Microsoft JRE Version 11, the installation uses this, there is no option to search for a different JRE during installation.

5.1.3 PostgreSQL

The solution makes use of native PostgreSQL database drivers making it easier to configure. The drivers required by PROIV on the Linux platform can be found in the following directory which is included in the LD_LIBRARY_PATH environment variable in the runproiv.sh script:

```
$PROIV_HOME/virtual_machine/lib
```

5.1.4 Oracle

The Linux platform includes the Oracle 19c Instant client, it can be found in the directory of your installation as shown below. This directory is added to the LD_LIBRARY_PATH environment variable as part of the **runproiv.sh** script. The Oracle 19c Instant Client is the minimum version required on 64-bit Linux platforms.

```
$PROIV_HOME/virtual_machine/lib/instant_client
```


5.1.5 SQL Server

Support for SQL Server is enabled through unixODBC. The unixODBC shared libraries must be added to the LD_LIBRARY_PATH in the **runproiv.sh** script; failure to do so will result in the PROIV SQL Server interface not initialising correctly. By default after rpm installation of unixODBC these libraries are usually part of standard system library paths.

There are specific version requirements for unixODBC and the Microsoft odbc driver, please refer to the section [above](#).

Access to SQL Server is via an ODBC DSN (Data Source Name), these are configured as per the unixODBC documentation. By way of example; the configuration is a two part process; first the unixODBC driver manager needs to know about the Microsoft Linux ODBC Driver; this is typically done by adding a section similar to:

```
[ODBC Driver 17 for SQL Server]
Description=Microsoft ODBC Driver 17 for SQL Server
Driver=/opt/microsoft/msodbcsql17/lib64/libmsodbcsql-17.3.so.1.1
UsageCount=1
```

To the `/etc/odbcinst.ini` file.

The data source is then configured; this can either be a system data source in which the system config file `/etc/odbc.ini` or the users specific `.odbc.ini` located in their home directory. The content would include a section similar to the following:

```
[Stock]
Driver = ODBC Driver 17 for SQL Server
Server = localhost,1433
Description = Stock Control Database
```

In this case the Stock data source is defined as being on server local host accessible on port 1433.

To configure PROIV to access the database as the default SQL database you would set the connection string to

username/password/Stock

where username and password are replaced with the correct credentials for the database.

5.2 Solaris

This release is supported on Solaris operating systems as per the supported platforms section above. It is very important that the operating system has all vendor-supplied patches installed.

5.2.1 Supported Java Runtime Environments

PROIV on 64-bit Solaris is built and tested using the Azul Java 11 Runtime Environments, however it is not at this time bundled with the distribution. You should ensure that a suitable JRE 11 is installed on your server prior to installation of PROIV. The installation process will search for a JRE in the following directory patterns, if a suitable one is not located then the installation will abort.

/usr/*[jJ][dD][kK]*11*	/opt/*[jJ][dD][kK]*11*	/usr/*[jJ][aA][vV][aA]*11*
/opt/*[jJ][aA][vV][aA]*11*	/usr/*[jJ][sS][Ee]*	/opt/*[jJ][sS][Ee]*
/usr/*[jJ][dD][kK]*	/opt/*[jJ][dD][kK]*	/usr/*[jJ][aA][vV][aA]*
/opt/*[jJ][aA][vV][aA]*	/usr/*[jJ][aA][vV][aA]/*[jJ]*	/opt/*[jJ][aA][vV][aA]/*[jJ]*
/opt/*[jJ]*	/usr/*[jJ]*	

5.2.2 Oracle

The Solaris platform includes the Oracle 18c Instant client, it can be found in the \$PROIV_HOME/virtual_machine/lib/instant_client directory of your installation. This directory is added to the LD_LIBRARY_PATH environment variable as part of the **runproiv.sh** script.

5.3 AIX

This release is supported on AIX operating systems as per the supported platforms section above. It is very important that the operating system has all vendor-supplied patches installed. See the Supported Platforms section for the currently supported Technology levels.

5.3.1 Supported Java Runtime Environments

PROIV on 64-bit AIX supports the IBM Java 11 JDK. The Adoptium JDK is not supported. The installation process initially refers to the path that is set in the JAVA_HOME variable; in case this is not found, it looks in the following directories (as defined using a regular expression) for a Java 11 JDK and will use it in preference as it is found.

/usr/*[jJ][aA][vV][aA]*11*	/opt/*[jJ][aA][vV][aA]*11*
/usr/*[jJ]2[sS][Ee]*	/opt/*[jJ]2[sS][Ee]*
/usr/*[jJ][dD][kK]*	/opt/*[jJ][dD][kK]*
/usr/*[jJ][aA][vV][aA]*	/opt/*[jJ][aA][vV][aA]*
/usr/*[jJ][aA][vV][aA]/*[jJ]2*	/opt/*[jJ][aA][vV][aA]/*[jJ]2*

/opt/*[jJ]2*	/usr/*[jJ]2*
--------------	--------------

5.3.2 Oracle

The AIX platform includes the Oracle 12c Instant client, it can be found in the \$PROIV_HOME/virtual_machine/lib/instant_client directory of your installation. This directory is added to the LD_LIBRARY_PATH environment variable as part of the **runproiv.sh** script.

Oracle may generate a warning return code “ORA-24347” when NULL columns are used in aggregate functions. This happens for all PROIV V8 and V9 versions. PROIV regards the warning as an error and rolls back the transaction. Within PROIV, this is only likely to happen with full function SQL.

You can instruct PROIV to ignore the Oracle warning by disabling the Enable Warnings As Error switch in the Oracle section of the Virtual Machine configuration in the PROIV Dashboard.

5.4 64-bit Windows

This release is supported on Windows operating systems as per the supported platforms section above. It is very important that the operating system has all vendor-supplied patches installed.

5.4.1 Supported Java Runtime Environments

The 64-bit Windows installation is bundled with a Microsoft Java 11 Runtime Environment.

5.4.2 PostgreSQL

The solution makes use of native PostgreSQL database drivers (libpq). If you wish to use PostgreSQL as your database you will need to download and install the PostgreSQL software from <https://www.postgresql.org/>. The Windows “Path” environment variable should be modified to include the paths to the PostgreSQL lib and bin folders.

5.5 Operating System Authentication to connect PROIV with Oracle database

On UNIX platforms, PROIV supports user authentication to establish connection between PROIV sessions and an Oracle database. You can configure an Oracle Database to authenticate (that is, verify the identity of) users or other entities that connect to the database. Authentication must be configured in two ways, such as through the PROIV application and from the Oracle database.

On the PROIV side, the username and/or password provided in the PROIV Dashboard settings should be blank. On the Oracle database side, you must set Oracle configuration to allow OS authentication. For more information, refer to Oracle documentation.

This will not affect standard database authentication of credentials, however should problems arise it is possible to connect using the existing method by setting the OCI Simple Logon property in the PROIV Dashboard. This cannot be used with OS authentication.

5.6 File System Support

PROIV is not supported on shared file systems such as SAMBA (SMB/CIFS), or NFS

6 Issues

This release of PROIV Version 10.400 includes fixes for all the issues listed below and those fixed in version 9 up to maintenance release 9.800.

6.1 Resolved Issues for v10.400.41 Maintenance Release

Support Ref.	Description	PROIV Ref.
	RLTree right panel visible but not showing content	156014
	Paging row falls behind the footer and does not auto-scroll	109391
	Non-editable fields become editable after exiting add mode	124118
	Auto-expand features do not work for Insert mode	124133
	Date picker blocks selection of dates in the previous and next months	124238
	On Tree control TreeClear method now deletes the list	124250
	Shift+Up Arrow multi-row paging deletion only deletes 1 row	128445
	Empty Active Paging Area incorrectly shows two pages & page controls	128455
	Non-visible overlaid paging fields corrupt layout on property change after Global Function call	133800
	Listbox with value not present causes errors and lost mouse clicks	134467
	Tethering not applied if set before the associated static control is rendered	135921
	Date picker opens and allows selection when date field is skipped	139604
	Generic server hangs when acceptor thread receives connection reset by peer from underlying NIO network	139988
	Second exit from file upload dialog causes session to hang	146469
	After sorting a listbox the client and kernel are out of step	148571
	Shift-click in a listbox selects wrong rows (appears to be all, actually nothing)	148572
	Listbox dynamic images appear on the wrong side of the text	148573
	Session hangs on interacting with client while tree control busy with certain actions	149986
PRB0050651	Custom wallpaper cleared after having viewed the value variables definition window	147473
PRB0050748	Developer showing incorrect line number when logic error occurs in line number greater than 999	151517

6.2 Resolved Issues for v10.300.48 GA Release

Support Ref.	Description	PROIV Ref.
PRB0050129	Application Connector hangs intermittently – This is caused by occasional issues in the network layer which have been addressed by restarting the internal server when required.	115630

6.3 Resolved Issues for v10.300.46 GA Release

Support Ref.	Description	PROIV Ref.
PRB0050650	Upgraded Apache Log4j2 to v2.17.1 to address CVE-2021-44832, CVE-2021-45105, CVE-2021-44228 and CVE-2021-45046	147496 148159 148662
	Ensure Java Archive (jar) files are removed if they are no longer required during an upgrade via the PROIV installer	147877

6.4 Resolved Issues for v10.300.36 GA Release

Support Ref.	Description	PROIV Ref.
	Uncaught ReferenceError: mousedown is not defined	135406
PRB0050332	Open Client failed to download large files	129007
	Paging area right-click menu is displayed with all options hidden	127997
	Listbox sort on column click stops working after refresh	128001
	LiteClient resources not updating following a software update	127978

6.5 Resolved Issues for v10.300.28 Maintenance Release

Support Ref.	Description	PROIV Ref.
	Paging row falls behind the footer and doesn't auto-scroll when it should	121147
	Significant performance degradation when loading Tree Controls	94291
	Paging areas incorrectly defaulting to expanded mode	112407
	Selecting Cancel in the file upload dialog retruns the wrong status	116773
	The showSelectRecord function amended to behave correctly with corresponding templates	120238
	Tree nodes and list items no longer scroll into view after a node is clicked	121169
	Modification to Tree or List controls results in all nodes vanishing	123942
	Paging areas rendering all fields as disabled on entry	124538
	Timing issue in the TreeExpandNode while loading Tree Control	123930
	Tree control expands all nodes on load	124649
PRB0043755	Library missing error when trying to connect GUI client	94418
PRB0043793	Added ability for replacing Aurora authentication with a custom implementation	95937
PRB0043837	Added ability to host Aurora on a separate machine to the PROIV server	100725
PRB0043873	Gateway Virtual Machine terminates abnormally	102206
PRB0043883	PROIV Virtual Machine failing to start via Application Services on Windows	102760
PRB0044087	Upload of file does not ignore events in OC/LC and sometimes fails for large files	104968

PRB0043984	List based Search and Replace may hang when the resultant line of logic would be greater than 100 characters long	105544
PRB0044019	PostgreSQL alternate null indicators not set up properly in Full Function SQL when receiving data from a table	106378
PRB0044004	Added ability for the Softkeys toolbar to be set at the bottom of the Open Client panel?	106667
PRB0050014	High memory usage using Restful Web Services and Soap Server-Side Objects	111097
PRB0050016	Client Connector max war contains old version of proiv-lite-client JavaScript libraries	112343
PRB0050190	Access Violation Error when using long running functions containing Paging Header Objects via Restful Web Services	118559

6.6 Resolved Issues for v10.202.10 Service Release

Support Ref.	Description	PROIV Ref.
	Windows called automatically on entry to a screen doesn't have focus on the first field in the window	106568
	Date pickers auto-close in small windows	106590
	Paging dynamics not rendered in Add mode where a global_lscall is performed	106891
	A combo-box in a small window auto-closes where its base touches the window	116800
	Email SSO has issues with MIME Types	109556
	Dismissing a popup window too fast leaves semi-opaque/modal or crashes	110121
PRB0050130	Potential memory leak in Lite/Open Client's state machine	115218

6.7 Resolved Issues for v10.201.11 Service Release

Support Ref.	Description	PROIV Ref.
	Sortable headers on paging areas are not showing the correct icon	92369
	The last line of a multi-line contracted paging is separated	93880
	Right click in RL Tree sometimes automatically selects an option	94124
	Fast navigation causing JSExcption errors	94866
	Further combo-box drop-down list issues	94889
	Calling a window before user entry causes subsequent combo list and date pickers to error	96243
	Expand mode after entering a paging row causes reanimation issue	96246
	Wrong page shown in paging area when entering add mode	96249
	Dismissing popup too fast leaves semi-opaque/modal screen	96252
	Arrow paging row navigation and delete removes the wrong rows	96253
	Sometimes unable to click into paging area fields	96255
	Dynamic icons are missing from combo lists and list boxes	96258

	Tool tips are missing from check-boxes	96261
	Font size of sequence too big & needs hover state	96263
	Row expand/contract frequently points the wrong way	96264
	RLTimer and screen refresh not working	96266
	Paging areas in tasks are throwing JS exceptions	104438
	Date pickers causing navigation and input corruption	104750

6.8 Resolved Issues for v10.200.59 Maintenance Release

Support Ref.	Description	PROIV Ref.
PRB0043700	The JSON files created from the Dashboard are incorrectly formatted	92648
PRB0043358	Validation message doesn't disappear when trying to save a SOAP webservice	77514
PRB0043360	Cannot save a function under SOAP service in PROIV Dashboard	77531
PRB0043396	Failed to import RESTful Web Services	79995
PRB0043408	A Screen function does not use two custom graphics in the Open Client session	81044
PRB0043404	RWS Max Request Size is not converted to bytes prior to content size check – the value entered is now in Mbytes with a maximum of 2000.	81196
PRB0043414	An Open Client session ComboBox does not list all drop down options alongside an Active Paging screen	81296
PRB0043420	A Listbox is incorrectly positioned in an Open Client screen as Legacy Render Mode defaults to true. This problem can be rectified by changing Legacy Render mode to false in the PROIV dashboard.	81702
PRB0043323	Logic editor 'settings' dialog does not allow developers to change font sizes – added a font size combo box.	74763
PRB0043568	Logic search of given keywords fails on a saved function list	87718
PRB0043592	Dashboard diagnostic setting does not output a specified trace file unless the Misc value is set greater than 0	88334
PRB0043654	Secure SSL Connection for Windows doesn't work	89940
PRB0043661	Adding a SOAP service with an output parameter of type array is not deployed by dashboard	90257
PRB0043196	Function interface map copy over is ignoring called functions and using last function in list	68288
	SQL Timeout value, used by SQL Server, is defaulting to -1 (Do not wait if locked) and should be defaulting to 5 seconds	88987
	Intermittent PRO-ISAM file corruption when running UNIX task server	88250
	Included node null checks to stop unwanted error messages from PROIV applications	92374

6.9 Resolved Issues for v10.101.3 Service Release

Support Ref.	Description	PROIV Ref.
	Default value for PROIV stack size raised to 16384	82488
	Corrected issue with logic verb RENAME_FILE on Alpine Linux	86488

6.10 Resolved Issues for v10.100.11 Service Release

Support Ref.	Description	PROIV Ref.
PRB0043102	When a record is added to an auto-expanded paging screen it is not rendered as the last record in the screen	60355
	Pressing escape while adding a record to a paging screen results in "Error 405" response from the browser	71950
	Application Windows are rendered in unexpected locations	74758
	Listboxes rendering dates in U.S. format	74759
	Uploading a file using CLIENT.RECEIVE fails and the file is not transferred	74846
	PROIV Profiler not producing any output when running PROIV Tasks	78736
	Option to add Lock Hints to full function SQL provided	79714

6.11 Resolved Issues for v10.00 Major Release

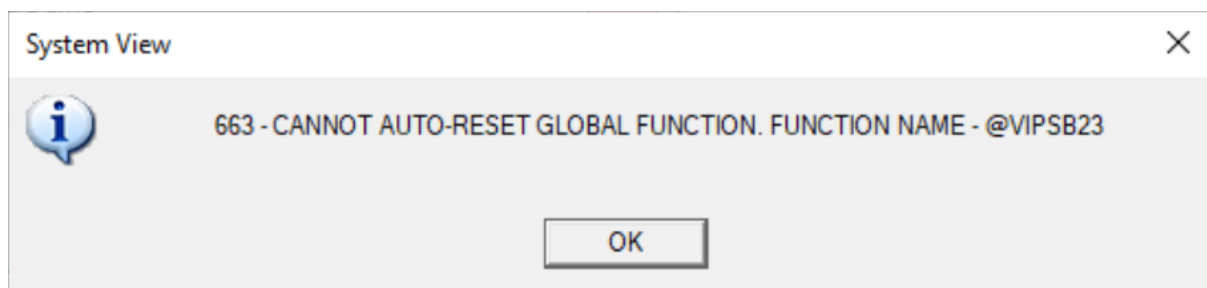
Support Ref.	Description	PROIV Ref.
PRB0042696	In Lite Client documentation a link to Component Templates fails	46170
PRB0042035	Services and Uninstall PROIV Version 9 option are missing	46181
PRB0042260	TASK_EXIT() logic processing doesn't match the documentation	46183
PRB0042596	Error reported when exporting numeric Value Variables to JSON with &#@DECEDT enabled	46196
PRB0042382	Not able to rename or delete the open client VM connection on a profile when copied from another profile	46197
PRB0042785	Paging Areas do not permit mouse navigation by clicking on the Paging Icon.	47478
PRB0042875	Access Violation Error - Kernel thread exceptions on connection	52120
PRB0043020	Unable to use supplied ActiveX MSComCtl2.MonthView.2 [MSCOMCT2.OCX] until Registry HKEY_CLASSES_ROOT License key loaded	57013
PRB0043076	Dynamic Text not lining up correctly in Open Client when editing a line on a Paging Screen	59653

6.12 Known Issues

On Linux Operating systems, where they may already be a version 9 installation, the V10 installation replaces the `/etc/systemd/system/multi-user.target.wants` symbolic links with those specific to v10 instead of creating new links for v10.

SELinux prevents running a system service where the binary to execute (e.g. `/home/user1/v10/ClientServices/bin/clientServices`) is in a user's home directory or root user's home directory. As a result, SELinux is not currently supported.

If you are upgrading from a version 10 release earlier than 10.400 then you will need to regen all stub functions in your application, regardless of whether they have changed or not. If you don't you will encounter errors similar to the following.



There is an issue running SQLPlus to Oracle databases on IBM AIX that reports errors similar to the following:

rtld: 0712-001 Symbol CreateIoCompletionPort was referenced.

The solution is to change the IOCP IBM AIX parameter from “defined” to “available”, this action requires root privilege, further details can be found at the following URL:

<https://geodatamaster.com/2015/09/04/sqlplus-error-for-oracle-12c-in-ibm-aix-rtld-0712-001-symbol-createiocompletionport-was-referenced/>

During installations on the Solaris operating system, the installer may report that installation is complete before “isin” has completed processing the developer.out or administrator.out files. Please allow a few minutes after the “Installation Complete” message before attempting to use the software.

The new Health Check feature does not work on the Microsoft Windows Edge browser in early versions of Windows 10. This is due to a known issue in the Edge Browser which was corrected in the revised October 2018 Release of the Windows 10 operating system, version 1809.

The “Reduce JVM OS Signals” must be set to true for Unix/Linux platforms and false for Windows. On previous versions, prior to 9.2R0-SR1, the default for all operating systems was false and so this will need to be manually changed in the PROIV Dashboard for all Unix/Linux configurations. In the PROIV Dashboard, navigate to the Virtual Machine, Server-Side Objects section and enable the “Reduce JVM OS Signals” setting. New installations now set the toggle correctly so it should not be changed. The toggle may be removed in a later release.

There is a difference in behaviour between the Open Client and the Windows Client when processing graphics assigned to an Icon when they are to be obtained from the internet. The Windows Client requires the internet settings to specify the URL of the graphics location on the internet and this is then used to access a file specified as the graphic for the icon. The Open Client allows the full URL, including the name of the file, to be assigned to the icon. From version 9.42 the name of the file used for the Windows Client is case sensitive (PRB0042615).

Over time the number of files in the temp folders of ApplicationServices and ClientServices will increase due to deploying and re-deploying configurations. You should periodically remove these files to reduce problems with disk space and the impact on the time it takes to uninstall and re-install the application.

Under Windows 10 the @DemoFileSendRecieve demo function will not transfer files to the default boots directory if the running process does not have permission to do so.

A red triangle pointing downwards, partially overlapping a grey triangle that points upwards, creating a white triangular space in the center.

zellis

**For further information please
visit zellis.com**

EKB 0000000 CSCB A0000 XXX 0000