

PROIV Version 13 Installation Guide

Spring 2024 (13.100)



Contents

1	Introduction	4
2	Installing Server Software on Windows	5
2.1	Upgrading an existing installation.....	5
2.1.1	Upgrading from previous major releases to Version 13.....	5
2.1.2	Upgrading from previous Version 13 release	5
2.2	Introduction Panel.....	6
2.3	Licence Agreement.....	6
2.4	Installation Location	7
2.5	Network Port Configuration	8
2.6	Initial Database Configuration	9
2.7	Windows Service Installation	9
2.8	Provide License During Installation.....	10
2.9	Pre-Installation Summary.....	11
3	Installing Server Software On UNIX	12
3.1	Upgrading an existing installation.....	12
3.1.1	Upgrading to Version 13	12
3.2	Starting the Installation Process.....	13
3.3	Accepting the Licence Agreement.....	13
3.4	Specifying Installation Directory	14
3.5	Specifying a Licence File During Installation	14
3.6	Network Port Configuration	15
3.7	External Database Configuration	16
3.8	Select Developer or Administrator.....	16
3.9	Configure Web Application Security.....	17
3.10	Installation Summary and Install	17
3.11	Installation differences when not installing as root	18
3.11.1	File Permissions.....	19
4	Uninstalling Server Software on Windows.....	20
5	Uninstalling Server Software On UNIX.....	22
6	Client Software	24
6.1	Client Installation	24
6.1.1	Upgrading	24

6.1.2	Installer Preparation	24
6.1.3	Installer Commencement Panel	24
6.1.4	Client Licence Agreement	25
6.1.5	Installation Type.....	25
6.1.6	Custom Setup Panel	26
6.1.7	Ready To Install Panel	26
6.1.8	Installation Progress	27
6.1.9	Installation Complete	27
6.2	Client Uninstallation	28
7	Document Control	29

1 Introduction

This guide explains the process to install PROIV version 13 on Windows and UNIX platforms. The PROIV version 13 installer does not offer the user a choice of which components may be installed, instead it installs all product components. There are two installation executables, one for the Server and another for the MFC Client.

You can install PROIV on Windows without any third-party software. For AIX you must install and configure the IBM Semeru Certified Java Development Kit. Refer to the individual platform sections for the pre-requisites of each.

Note: PROIV version numbers will consist of three numbers of the form:

Major.Minor.Build

The *Major* number indicates the current Product release e.g version 13 for this release.

The *Minor* number will be three digits, in steps of 100 e.g. 13.100, 13.200 etc., indicating a maintenance release, or three digits in steps of 1, indicating a service release. E.g. 13.101, 13.102, 13.103 etc. i.e. 13.102 is the second service release to maintenance release 13.100.

The *Build* number is incremented automatically by the PROIV build infrastructure each time a build of the software takes place and so the higher the number the more recent the build. This number is reset to zero each time the minor version is increased.

2 Installing Server Software on Windows

PROIV version 13 has a similar product installer to previous versions of PROIV with only one panel with which to submit configuration details. The installation process is similar on all platforms but on Windows the installation must be carried out by a user with Administrator privileges.

The installation proceeds through a set of panels, which you move forward or backward using **Previous** and **Next** buttons. If you wish to abort the installation, then click **Cancel** at any stage during installation. To start the installation process, double-click the **PROIV Version 13 Windows installation executable**.

2.1 Upgrading an existing installation

2.1.1 Upgrading from previous major releases to Version 13

PROIV version 13 is not 'gen' compatible with any previous major versions of PROIV, therefore, a mandatory Re-build of all code is required when moving to version 13. If you are upgrading to version 13, you must take a backup of your boots folder; export your application source code and import into version 13 and then perform a rebuild of the application. Additionally, all existing set up options will need to be reconfigured using the PROIV Dashboard.

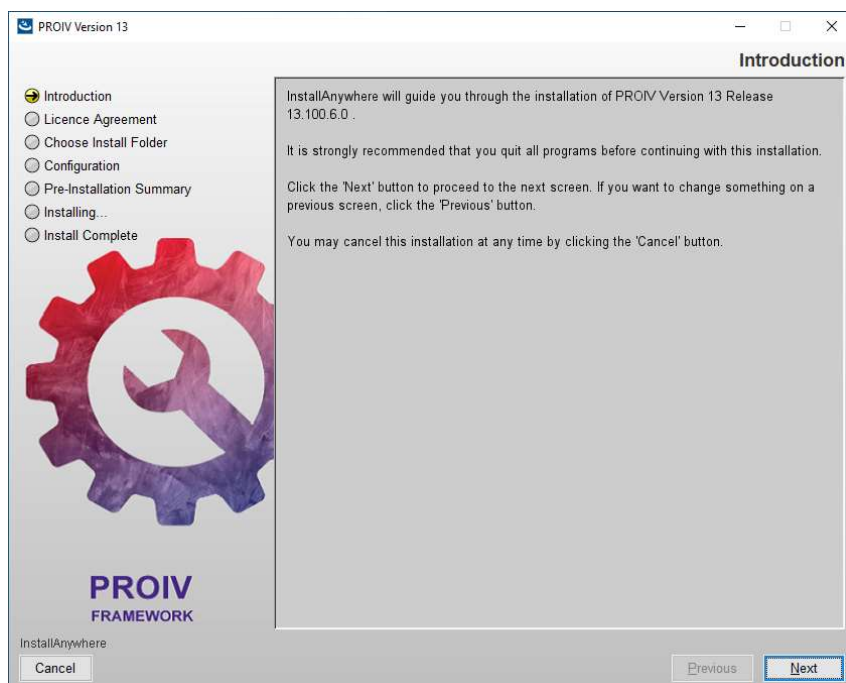
Note: Contact PROIV Support for guidance if you are upgrading from a much older version of PROIV as additional processes may be required.

2.1.2 Upgrading from previous Version 13 release

PROIV version 13 will maintain 'gen' compatibility with prior releases of version 13 as new versions are released. A mandatory Rebuild is not required when upgrading, however it is recommended you take a backup of your boots folder by exporting your application source code and importing into the upgraded version 13 and then perform a rebuild of the application's functions. All existing set up options will remain as previously configured.

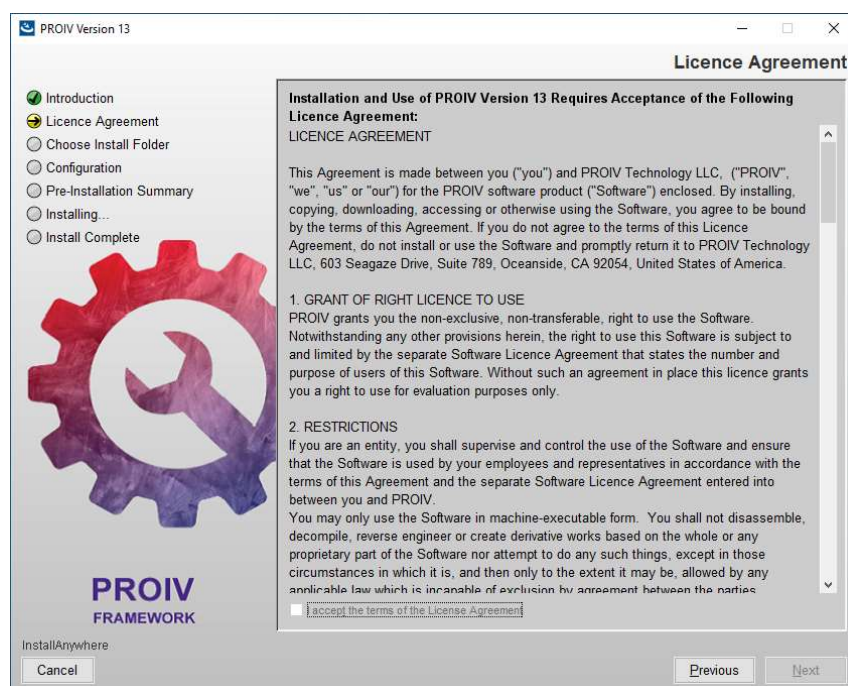
2.2 Introduction Panel

Click **Next**.



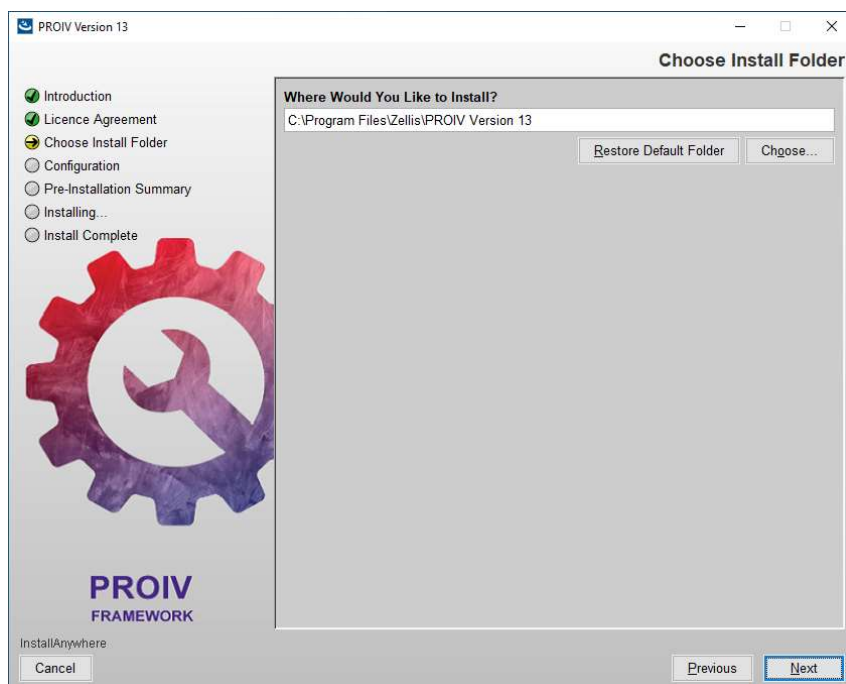
2.3 Licence Agreement

Read through the agreement, check I accept the terms of the Licence Agreement and click **Next**.



Note: You cannot accept the agreement without scrolling to the bottom; this is to encourage you to read and be aware of the terms of the Licence Agreement. Zellis reserves the right to amend the terms of the licence agreement when necessary.

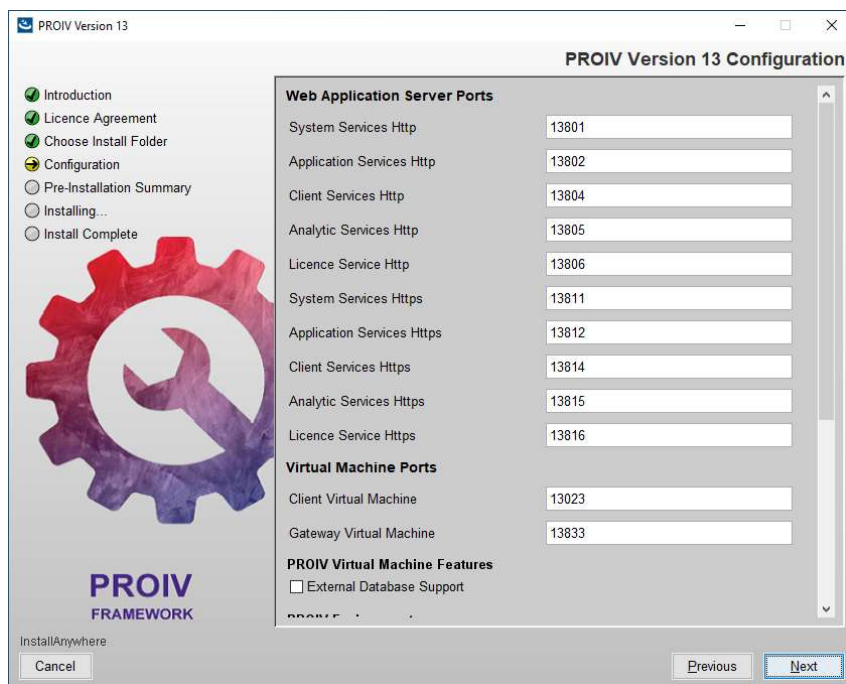
2.4 Installation Location



Click Choose to change the destination folder for the installation and click Next.

Note: PROIV version 13 does not support the upgrade of an existing older major PROIV installation. However, you can install version 13 alongside older major releases such as version 10.

2.5 Network Port Configuration



Configure PROIV as follows:

Under Web Application Server Ports group and Virtual Machine Port group, enter the TCP/IP listening port numbers for all port types. All these ports must be unique. By default, the installation process offers ports which are not in use at the time, the panel appears.

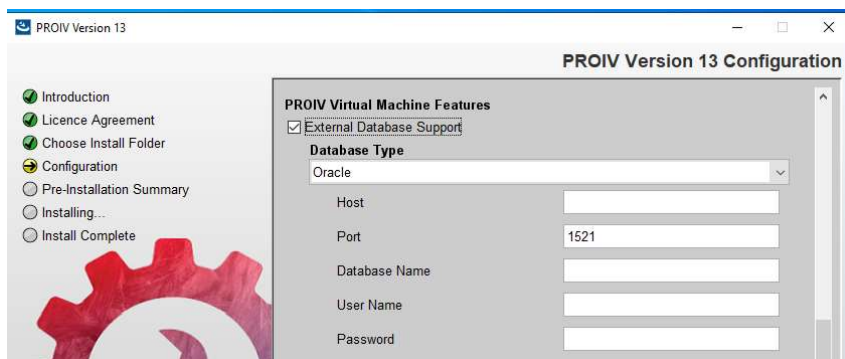
After submitting the panel, the installer will notify you if the port number entered is in use. You must re-enter the configuration information in this instance.

To enable support for external databases such as Oracle, PostgreSQL or SQL Server, select the External Database Support checkbox.

Note: The default PROIV version 13 ports are unique to version 13, other versions have their own unique port numbers.

2.6 Initial Database Configuration

On the Database Type list, select the required database. For example, Oracle or PostgreSQL.



In the Host box, enter the host name or the IP address of the database server.

In the Port box, enter the port number the database server is configured to use.

In the Database Name box, enter the name of the database.

Enter the Username and Password for the database in the respective boxes.

Note: If you do not configure external database during installation but want to connect to the external database after installation, login to PROIV Dashboard and update the database configuration as required. Refer to PROIV Help for more information.

Note: The installer does not validate any of the parameters entered on this screen.

Click **Next**.

2.7 Windows Service Installation

System Installation

☒ Local System ☐ Local Service

It is possible to install the PROIV services on Windows as the Local Service account. This will have the effect of reducing the access rights given to the service. If you wish to do this then select “Local Service” and the services will be installed with the local account known as NT Authority/LocalService.

The files in the PROIV installation will have their permissions updated to allow this account to be able to read and write to them. It is important to note that if your application uses other interfaces and directories then it is your responsibility to ensure that those external interfaces give the LocalService account sufficient permission to continue to operate with them.

2.8 Provide License During Installation

Upload licence file (leave unchecked for default licence)

☒

Licence file location

Restore Default Choose...

Note: The installer will advise if any incorrect configuration parameters have been entered.

You will be invited to correct the relevant parameters. The installation will not proceed unless the correct parameters are entered.

PROIV version 13 installs a default licence. However, if you want to choose from a location, click Choose and locate the licence file.

Note: Earlier PROIV Versions' licence files cannot be used with PROIV version 13.

In the Web Application Server security group, you can setup the security for the web applications served as part of the PROIV installation. The username and password entered are then configured for each of the applications in your web application. However, you can change them after installation.

Web Application Server Security

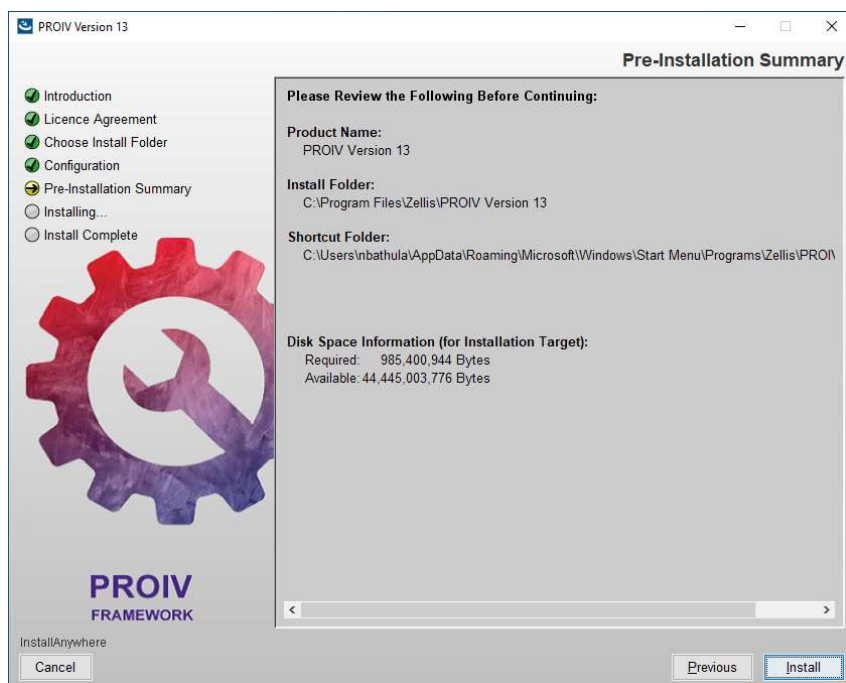
User Name

Password

Verify Password

2.9 Pre-Installation Summary

A summary of where the software is to be installed appears. Click Install to proceed.



On successful installation, the PROIV version 13 – Install Complete panel appears and may prompt to restart the system. If such a prompt appears you can either restart the system immediately or later; however, it is recommended to restart the system before using PROIV in this instance.

3 Installing Server Software On UNIX

The PROIV version 13 server installation on UNIX platforms uses a command line interface rather than graphical one; the installer is provided as a binary executable and requires a minimum of Java 17 Runtime Environment. If you are installing on Linux this is bundled into the installer for AIX you need to install the pre-requisite Certified IBM Semeru JDK 17 before starting to install version 13.

Refer to the PROIV Release Notes associated with each release to get more information on the supported Java Runtime Environments (JRE) and locations where the installer searches for a JRE.

You can run the installer without any additional command line arguments and no longer need to do so as the root user. Installing as a user other than root requires additional steps these are covered below in section 3.11.

For example on a Linux 64-bit platform:

```
./proiv13.xxx.xx_linux_x86-64.bin
```

If PROIV is already installed on the server and you are performing a side by side install or an upgrade then ensure the PROIV and its services are not running before doing another install or upgrade.

The installation takes the form of an interactive console installation where you are prompted for installation location and various configuration parameters; once all information has been entered the product is installed and configured with the specified parameters.

The following sections detail an installation example on Linux; other UNIX platforms follow the same process.

3.1 Upgrading an existing installation

3.1.1 Upgrading to Version 13

PROIV version 13 is not 'gen' compatible with any previous major versions of PROIV, therefore, a mandatory Re-build of all code is required when moving to version 13. If you are upgrading to version 13, you must take a backup of your boots folder; export your application source code and import into version 13 and then perform a rebuild of the application. Additionally, all existing set up options will need to be reconfigured using the PROIV Dashboard.

Note: Contact PROIV support for advice if upgrading from a much older versions of PROIV as additional steps may be required.

3.2 Starting the Installation Process

Open the command prompt.

The installation on UNIX is started by running the distribution. Once started the installer will locate a suitable JRE and display the following screen, press **Enter** to continue.

```
=====
PROIV Version 13                                     (created with InstallAnywhere)
=====

Preparing CONSOLE Mode Installation...

=====

PROIV Version 13 Installer Credentials
=====

The installation is progressing without root privileges. After this process is
completed, there will be additional steps to be performed manually with root
privilege for the installation to work as expected.

->1- Continue to Next
   2- Cancel

ENTER THE NUMBER OF THE DESIRED CHOICE, OR PRESS <ENTER> TO ACCEPT THE
DEFAULT: █
```

3.3 Accepting the Licence Agreement

The set of prompts allows you to scroll through the sections of the Licence agreement; you must read, and press enter to scroll through each section.

```
This Agreement is made between you ("you") and PROIV Technology LLC,
("PROIV", "we", "us" or "our") for the PROIV software product ("Software")
enclosed. By installing, copying, downloading, accessing or otherwise using
the Software, you agree to be bound by the terms of this Agreement. If you do
not agree to the terms of this Licence Agreement, do not install or use the
Software and promptly return it to PROIV Technology LLC, 603 Seagaze Drive,
Suite 789, Oceanside, CA 92054, United States of America.

1. GRANT OF RIGHT LICENCE TO USE
PROIV grants you the non-exclusive, non-transferable, right to use the
Software. Notwithstanding any other provisions herein, the right to use this
Software is subject to and limited by the separate Software Licence Agreement
that states the number and purpose of users of this Software. Without such an
agreement in place this licence grants you a right to use for evaluation
purposes only.

2. RESTRICTIONS
If you are an entity, you shall supervise and control the use of the Software
and ensure that the Software is used by your employees and representatives in
accordance with the terms of this Agreement and the separate Software Licence
Agreement entered into between you and PROIV.

PRESS <ENTER> TO CONTINUE: █
```

Once the licence agreement has been displayed you can choose to accept it to continue with the installation process. If you do not accept the agreement then enter **N** and the installation process will terminate.

3.4 Specifying Installation Directory

Specify the folder into which PROIV is installed or alternatively press **Enter** to accept the default folder.

```
Choose Install Folder
-----

Where would you like to install?

    Default Install Folder: /opt/zellis/proiv_version_13

ENTER AN ABSOLUTE PATH, OR PRESS <ENTER> TO ACCEPT THE DEFAULT
: /proiv13
```

Note: The default installation folder has changed, to reflect the change in name of the PROIV holding company to Zellis.

3.5 Specifying a Licence File During Installation

```
Licence File Location
-----

Please type the full path name of a valid PROIV Version 13 Licence file or
just press enter to install the default Licence

Licence file location : 
```

Enter the location for your Licence File. If you do not have a License File, press **Enter** to install the default licence.

3.6 Network Port Configuration

The installer then moves on to setting up the network listening ports, these are presented sequentially, either accept the default or specify the port you wish to use; for example:

```
Web Application Server Ports
-----

Analytic Services Http (Default: 13805):

=====

Web Application Server Ports
-----

Analytic Services Https (Default: 13815):

=====

Web Application Server Ports
-----

System Services Http (Default: 13801):

=====

Web Application Server Ports
-----

System Services Https (Default: 13811):

=====

Web Application Server Ports
-----

Licence Services Http (Default: 13806): █
```

Enter the TCP/IP listening port numbers for all port types. All these ports must be unique. By default, the installation process offers ports which are not in use at the time.

Note: The installer will notify you if the port number entered is in use. You must re-enter the configuration information in this instance.

3.7 External Database Configuration

To configure an external database, enter Y and specify the configuration details; the following screenshot shows how to configure the Oracle external database.

```
=====
Configure PROIV External Database Connection
-----

Configure PROIV External Database Connection (Default: Y):

=====
PROIV External Database Configuration
-----

Please indicate the database type

->1- Oracle
   2- PostgreSQL
   3- SQLServer

ENTER THE NUMBER FOR YOUR CHOICE, OR PRESS <ENTER> TO ACCEPT THE DEFAULT: [ ]
```

3.8 Select Developer or Administrator

Select the PROIV Environment as either Developer (default) or Administrator.

```
=====
PROIV Environment
-----

Please choose between Developer or Administrator Environment

->1- Developer
   2- Administrator

ENTER THE NUMBER FOR YOUR CHOICE, OR PRESS <ENTER> TO ACCEPT THE DEFAULT: [ ]
```

To optionally install the demonstration files and functions, enter 1.

Note: the PROIV Demonstration Files include several applications which provide examples of PROIV version 13 functionality.

```
=====
Install PROIV Demonstration sample applications
-----

Please select the option below to have PROIV demonstration applications
installed

->1- Install Demonstration Files
   2- Not Required

ENTER THE NUMBER FOR YOUR CHOICE, OR PRESS <ENTER> TO ACCEPT THE DEFAULT: [ ]
```

3.9 Configure Web Application Security

Configure PROIV web application security, enter the user name and password (twice); the credentials will be required to access the PROIV version 13 Dashboard.

```
=====
Web Application Server Security
-----

Please enter a user name

User name (Default: admin): [ ]
```

3.10 Installation Summary and Install

The installation summary appears with the installation location and the space required, press **Enter** to continue.

```
Pre-Installation Summary
-----

Please Review the Following Before Continuing:

Product Name:
    proiv_version_13

Install Folder:
    /opt/zellis/proiv_version_13

Link Folder:
    /opt/zellis/_proiv_version_13_

Disk Space Information (for Installation Target):
    Required:  1,276,787,074 Bytes
    Available: 3,901,050,880 Bytes

PRESS <ENTER> TO CONTINUE: [ ]
```

Press **Enter** twice to begin the installation and configuration.

Press **Enter** to exit the installation process.

```
Installation Complete
-----

Congratulations. proiv_version_13 has been successfully installed to:

    /opt/zellis/proiv_version_13

PRESS <ENTER> TO EXIT THE INSTALLER: [ ]
```

3.11 Installation differences when not installing as root

If you choose to install as the non-root user then the first screen you will be presented with is a credentials acceptance dialog; this is to remind you that you are not running as root and that additional steps are required to be run as root to complete the installation process.

Note: When installing on IBM AIX as a non-root user the installation command requires additional parameters to specify the Java Virtual Machine (JVM) to use during the installation process. Add the following to your usual command line, including a single space character:

LAX_VM <path to java virtual machine>

Enter 1 to accept there are additional steps and to continue with the installation.

Entering 2 will cancel the installation and allow you to re-run it as root if that is your wish.

```
PROIV Version 13 Installer Credentials
-----

The installation is progressing without root privileges. After this process is
completed, there will be additional steps to be performed manually with root
privilege for the installation to work as expected.

->1- Continue to Next
    2- Cancel

ENTER THE NUMBER OF THE DESIRED CHOICE, OR PRESS <ENTER> TO ACCEPT THE
DEFAULT: █
```

The rest of the installation is as per earlier sections. Once the files are loaded and the configuration settings applied you will be presented with an additional information panel.

```
Installation Complete
-----

This installation of proiv_version_13 was not performed as root, you need to
run /home/_ /proiv13/bin/service.sh as root to install the PROIV services
on your operating system.

PRESS <ENTER> TO EXIT THE INSTALLER: █
```

To complete the installation, you need to run the script service.sh, this can be found in the bin directory underneath the root of the installation. To install the services run the script as root and the services will be installed for your chosen operating system; for Linux this is systemd for AIX and Solaris it will be via init.d. The example below is from RedHat Linux.

```
sudo: service.sh: command not found
non-root> sudo ./service.sh
Usage: ./service.sh [install | remove]
    install - Installs PROIV services from current installation directory
    remove - Removes "any" currently installed PROIV services on the system
non-root> sudo ./service.sh install
Stopping services.....
Copying isamlog and isamdef into /etc
Installing services from /home/_ /proiv13 █
```

On RedHat with systemd you can list the services as follows:

```
non-root>systemctl list-units p4* | grep V13
p4analyticsl3.service loaded active running PROIV V13 Analytic Services
p4appconl3.service loaded active running PROIV V13 Application Connector
p4cliconl3.service loaded active running PROIV V13 Client Connector
p4licensingl3.service loaded active running PROIV V13 Licence Services
p4systeml3.service loaded active running PROIV V13 System Services
p4taskserverl3.service loaded active exited PROIV V13 Task Server Services
```

Note that if you install on Linux which does not support systemd then the services will not be installed.

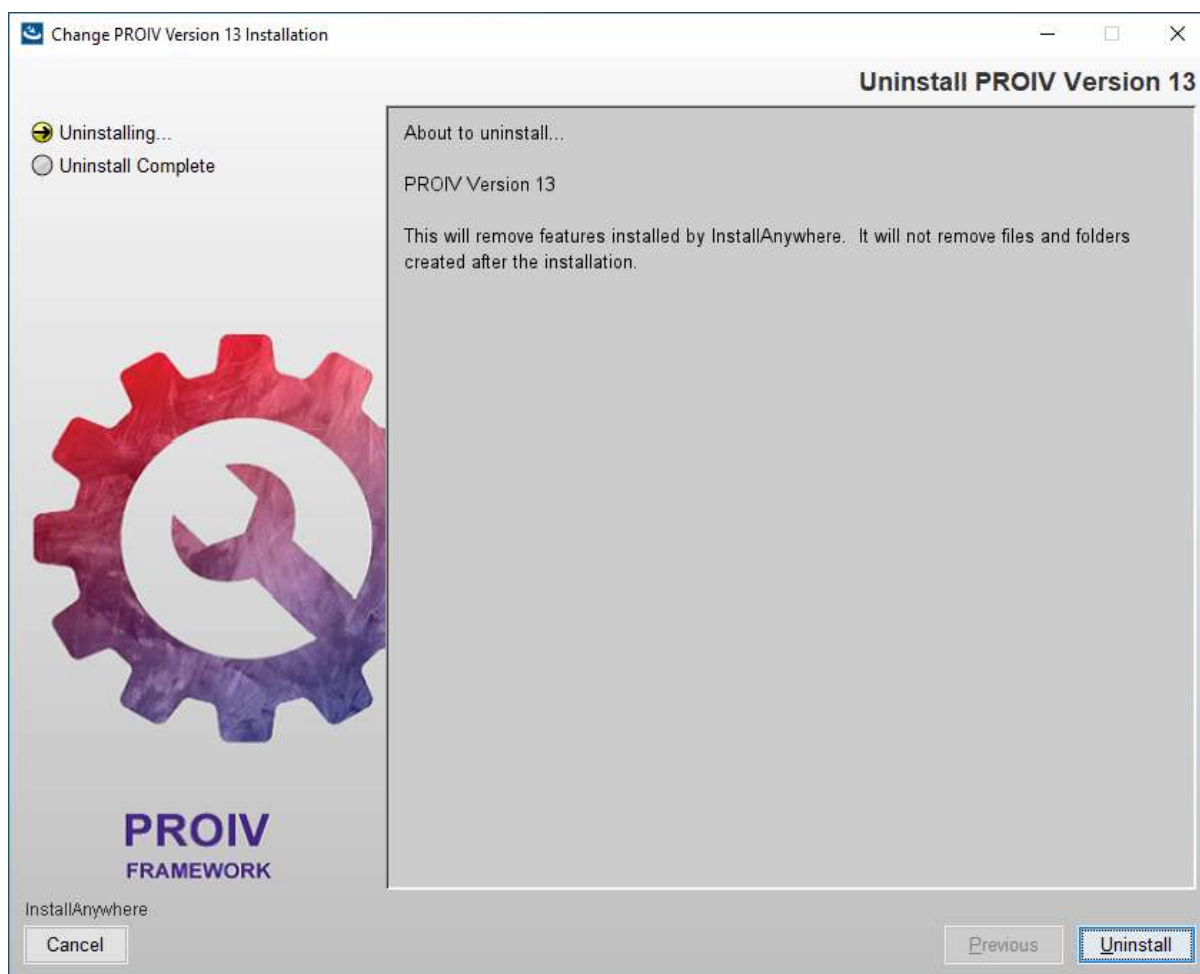
3.11.1 File Permissions

When not installed as root, the PROIV installation files are owned by the user running the installation process. If you change permissions on files and directories, then you will need to ensure that the PROIV components which access them can, otherwise the installation may generate errors or warnings.

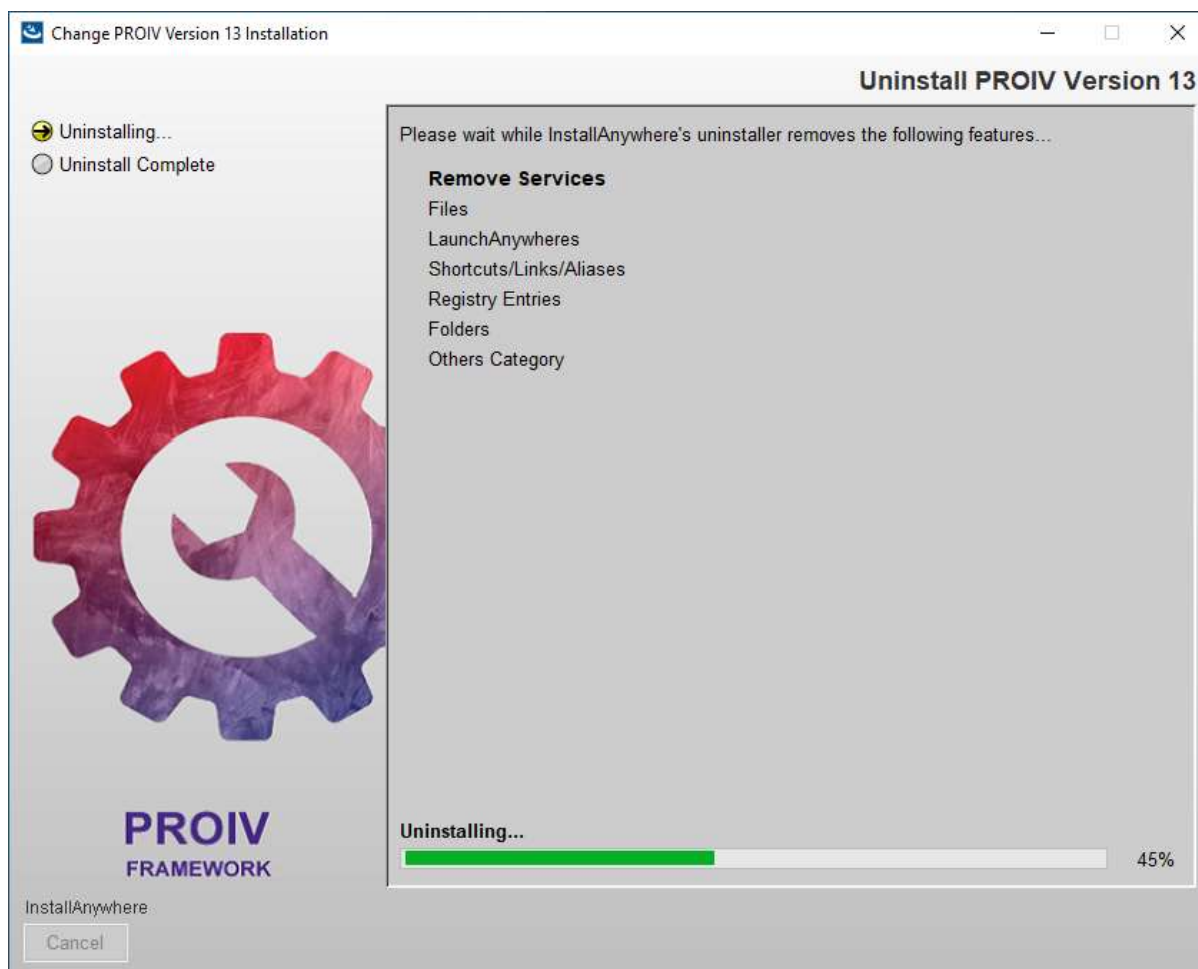
4 Uninstalling Server Software on Windows

Follow these steps to uninstall the server software on Windows.

- Click the Windows key and type “**Add or Remove Programs**”.
- In the list of Apps find and click on “**PROIV Version 13**”.
- Click on the “**Uninstall**” option that is displayed.



The progress of each stage of the uninstall process appears in a panel as below.



A pop-up window appears to confirm your wish to retain the bootstraps folder. If you wish to retain the bootstraps, click **Yes**.



When the uninstall process completes, it reports a list of all folders where it was unable to remove all the content. These folders contain files which are added outside of the installation process. They may contain, for example, log files which are created by PROIV during execution. This is perfectly normal and these folders can be deleted should you no longer need them.

5 Uninstalling Server Software On UNIX

To uninstall PROIV on a UNIX system, login as root (or whatever user id has permissions to perform the necessary file delete operations), navigate to the top-level folder of your PROIV installation; if you did a default install, then:

```
/opt/zellis/proiv_version_13/_proiv_version_13_
```

Execute the uninstall command as appears in the following snapshot.

Once the uninstall process starts, press **Enter** to continue with the product removal process.

```

                                     /Uninstall
=====
proiv_version_13                      (created with InstallAnywhere)
-----

Preparing CONSOLE Mode Uninstallation...

=====

Uninstall proiv_version_13
-----

About to uninstall...

proiv_version_13

This will remove features installed by InstallAnywhere.  It will not remove
files and folders created after the installation.

PRESS <ENTER> TO CONTINUE: █

```

If you wish to keep the bootstraps, enter 1.

```

Uninstalling PROIV Version 13
-----

Do you want to retain the bootstraps folder
/opt/zellis/proiv_version_13/virtual_machine/boots ?

->1- Yes
   2- No

ENTER THE NUMBER OF THE DESIRED CHOICE, OR PRESS <ENTER> TO ACCEPT THE
DEFAULT: █

```

```

*
*****
*****
*****
*****

=====

Uninstall Complete
-----

All items were successfully uninstalled.

```

The uninstallation of the software is now complete. If items could not be uninstalled the message “Some items could not be removed” will be displayed and these will have to be removed manually.

6 Client Software

6.1 Client Installation

The PROIV MFC Client and Forms Designer are distributed as a single installation executable as per previous releases of the product. To install the software, double-click the installation executable.

The installation takes the form of a set of wizards, which you move forward or backward by using **Previous** and **Next** options. However, if you wish to abort the installation then click **Cancel**.

6.1.1 Upgrading

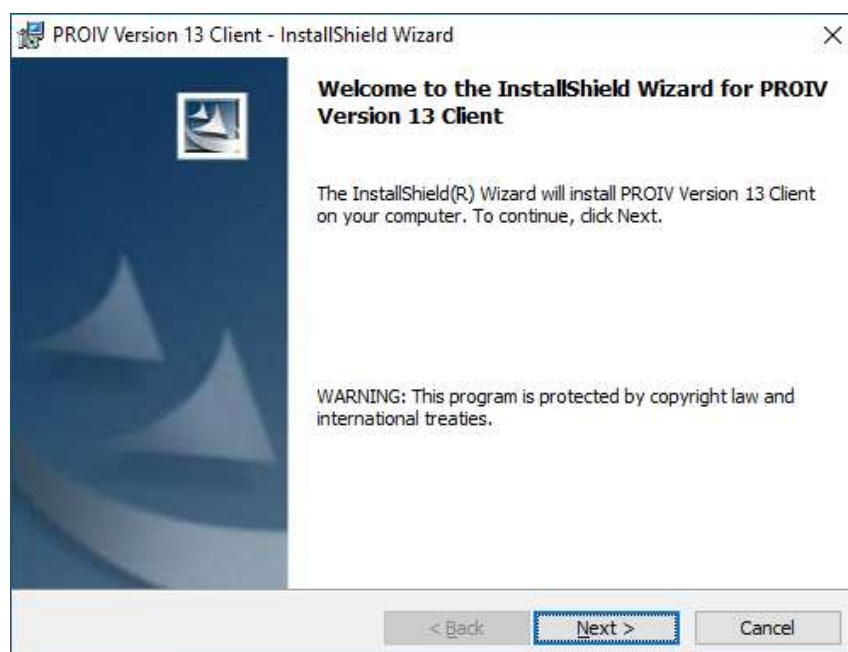
We would recommend uninstalling any previous versions of the MFC client prior to installing this new version. If you wish to keep previous settings you can export the HKEY_CURRENT_USER/Software/Zellis branch to a registry file and re-import when installation is complete. This requires administrator access and should only be carried out by a competent individual.

6.1.2 Installer Preparation

A window appears that indicates the installer is preparing to install and indicates the progress through this preparation. The only option available to the user at this time is Cancel, which if pressed will cancel the installation process.

6.1.3 Installer Commencement Panel

When the installer preparation is complete the welcome panel appears:



Click **Next** to continue with the installation or cancel to abandon the installation.

6.1.4 Client Licence Agreement

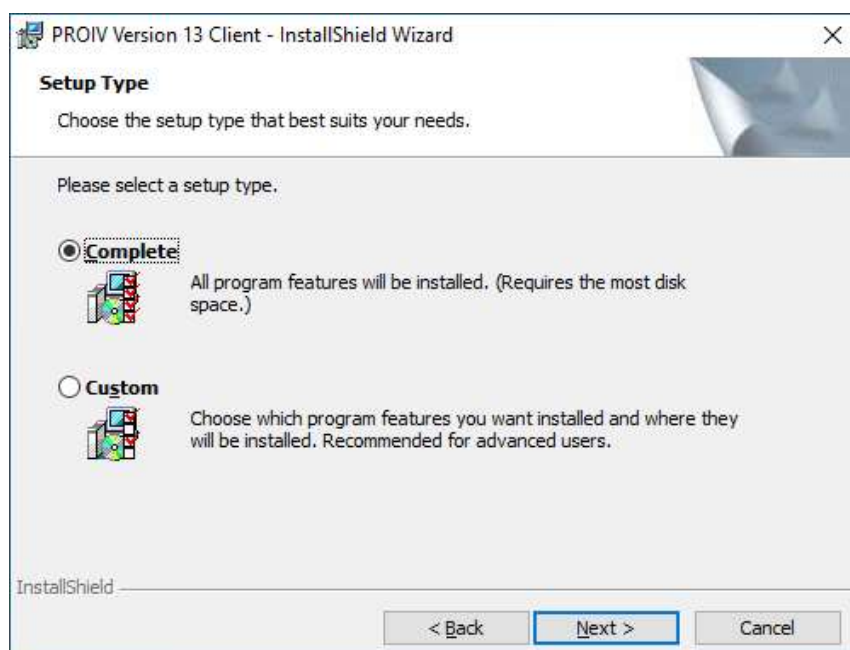
To install the software, you must accept the licence agreement, scroll the licence agreement to the bottom and click “I **accept the terms of the Licence Agreement**”.



Note: You cannot select this without scrolling to the bottom of the agreement; this ensures you have read the terms of the licence.

6.1.5 Installation Type

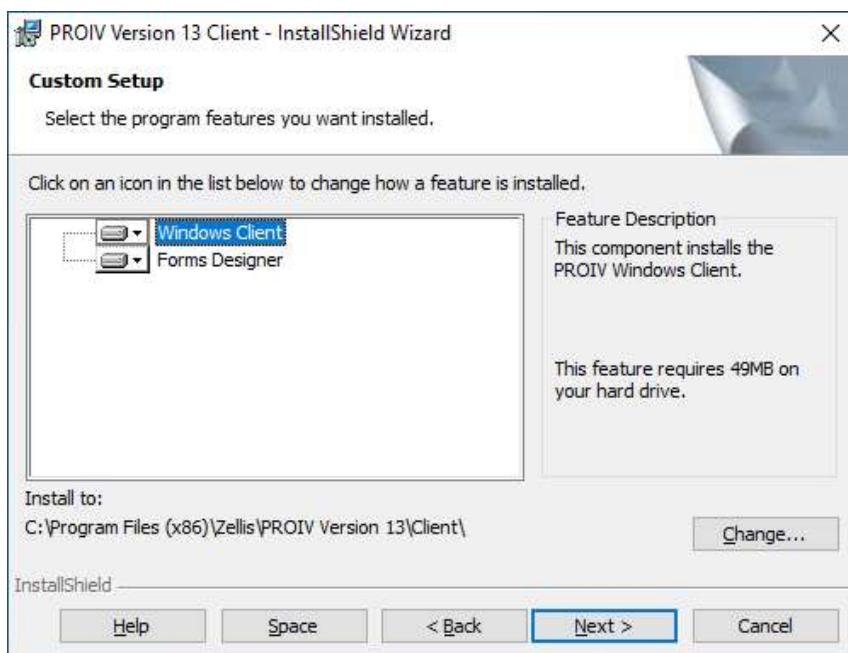
The PROIV MFC Client can be installed as one of the two types ‘Complete’ and ‘Custom’. **Complete** installs the PROIV MFC Client with all available features whereas **Custom** installs the selected features.



6.1.6 Custom Setup Panel

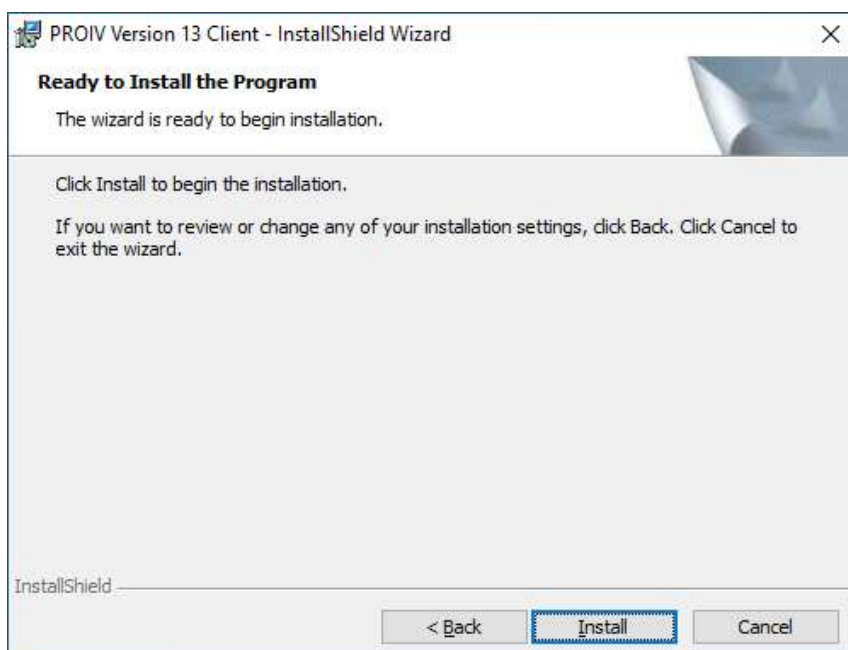
This wizard appears only if you select 'Custom' in the previous panel. Select the required components for installation.

Note: The default installation folder has been changed to reflect the new name of the PROIV holding company (Zellis). It is recommended that you perform an uninstall of all previous versions of the Client (installed as NorthgateArinso) prior to installing version 13.



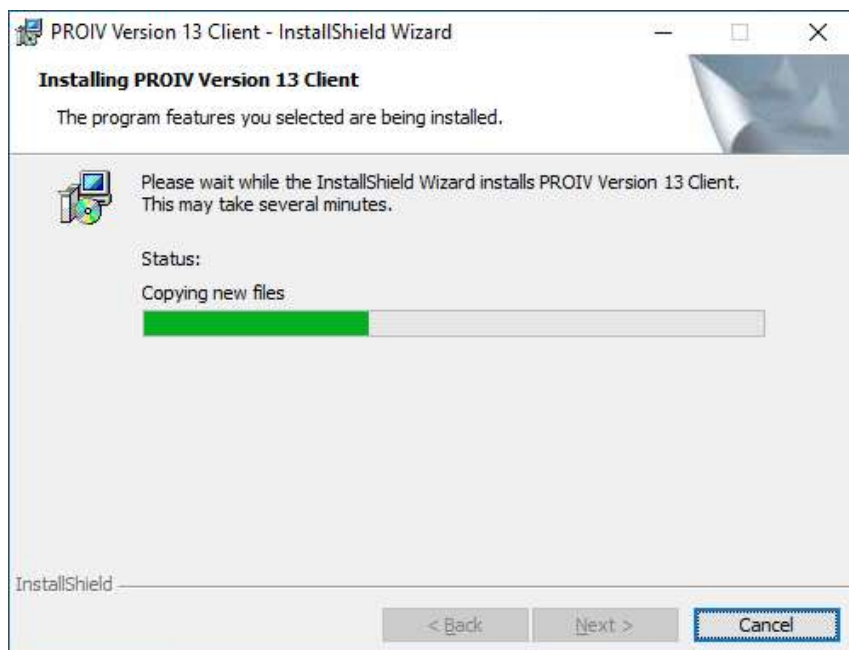
6.1.7 Ready To Install Panel

Click **Install** to begin the installation, Back to navigate to the previous wizard panels or Cancel to abandon the installation.



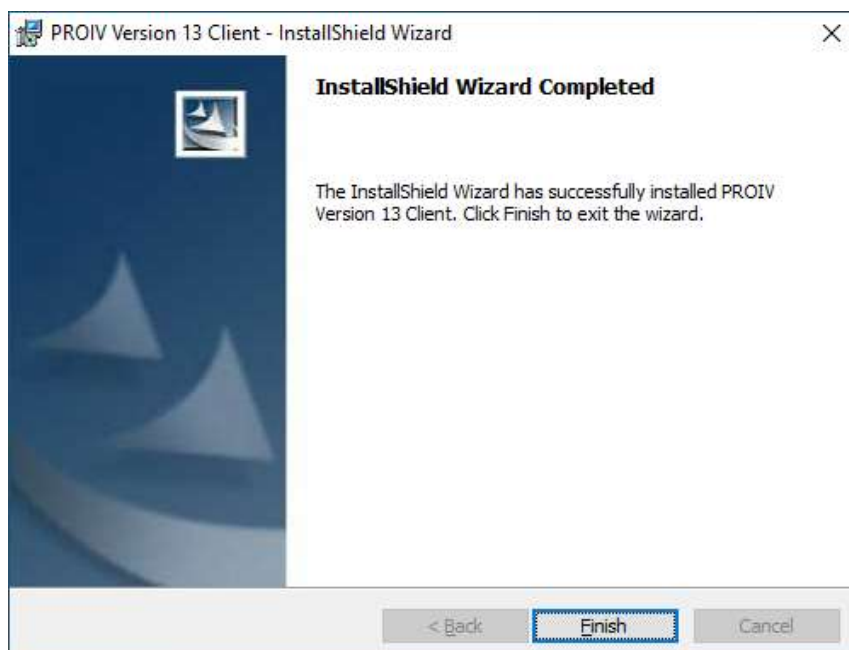
6.1.8 Installation Progress

The status bar indicates the progress of the installation.



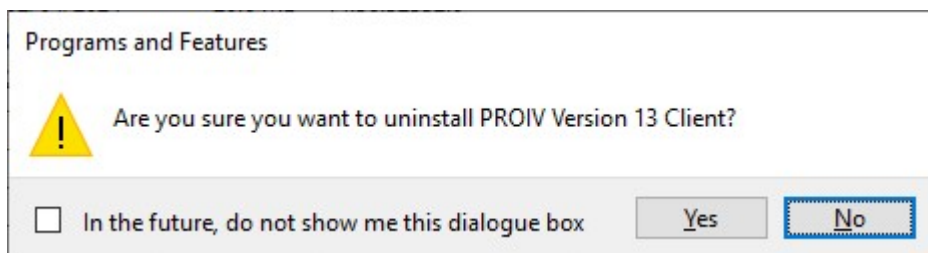
6.1.9 Installation Complete

When the installation is complete, the following screen appears. Click **Finish**.

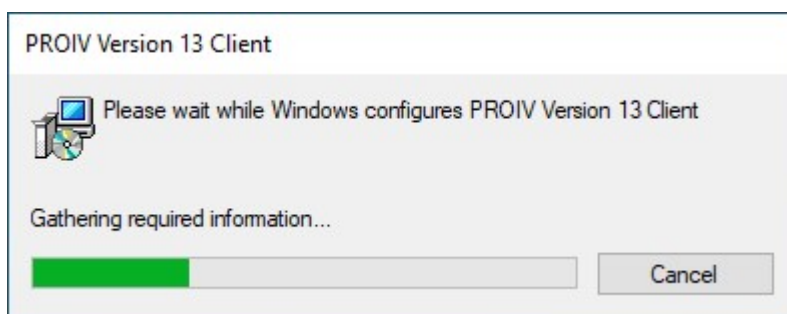


6.2 Client Uninstallation

Uninstalling the PROIV client is a simple process, ensure you are logged in as a user with the correct access rights and then type Add or Remove Programs in the Windows search box. Scroll down the Apps and Features List and click on "PROIV Version 13 Client". Click the Uninstall button to commence.



The uninstall will start and display a small window showing the uninstall progress, once complete the client will have been removed from the system.



When the uninstall process is complete the uninstaller closes without user interaction.

7 Document Control

Document Information

Information	
Document Id	PROIV13.100_IG
Document Owner	Zellis
Issue Date	Spring 2024
Last Saved Date	21 May 2024
File Name	PROIVv13.100InstallationGuide.docx

Document History

Version	Issue Date	Changes
1.0	Spring 2024	Original

A red triangle pointing downwards, partially overlapping a grey triangle that points upwards, creating a white triangular space in the center.

zellis

**For further information please
visit zellis.com**

EKB 0000000 CSCB A0000 XXX 0000