

PROIV Version 10 Installation Guide

Autumn 2024 (10.900) Update



Contents

1	Introduction	4
2	Installing Server Software on Windows	5
2.1	Upgrading an existing installation.....	5
2.1.1	Upgrading from Version 9 to Version 10	5
2.1.2	Upgrading from a previous release of version 10	5
2.2	Introduction Panel.....	5
2.3	Licence Agreement.....	6
2.4	Installation Location	6
2.5	Initial Database Configuration	8
2.6	Windows Service Installation	8
2.7	Provide License During Installation	9
2.8	Pre-Installation Summary.....	10
3	Installing Server Software On UNIX	11
3.1	Upgrading an existing installation.....	11
3.1.1	Upgrading from Version 9 to Version 10	11
3.2	Starting the Installation Process.....	12
3.3	Accepting the Licence Agreement.....	13
3.4	Specifying Installation Directory	13
3.5	Specifying a Licence File During Installation	13
3.6	Network Port Configuration	14
3.7	External Database Configuration	15
3.8	Select Developer or Administrator.....	16
3.9	Web Application Server Security.....	16
3.10	Installation Summary and Install	17
3.11	Installation differences when not installing as root	18
3.11.1	File Permissions	19
4	Uninstalling Server Software on Windows.....	20
5	Uninstalling Server Software On UNIX.....	22
6	Client Software	23
6.1	Client Installation	23
6.1.1	Upgrading	23
6.1.2	Installer Preparation.....	23

6.1.3	Installer Commencement Panel	24
6.1.4	Client Licence Agreement	24
6.1.5	Installation Type.....	25
6.1.6	Custom Setup Panel	25
6.1.7	Ready To Install Panel	26
6.1.8	Installation Progress	26
6.1.9	Installation Complete	27
6.2	Client Uninstallation	27
6.2.1	Confirmation panel.....	27
6.2.2	Uninstall Progress.....	28
7	Document Control	29

1 Introduction

This guide explains the process to install PROIV V10 on Windows and UNIX platforms. There are two installation executables, one for the Server and another for the MFC Client.

You can install PROIV on Windows without any third-party software; however, for UNIX platforms you must install and configure the Java Runtime Environment. Refer to the individual platform sections for the pre-requisites of that platform.

The PROIV version number consists of three numbers:

Major.Minor.Build

Major number indicates the current Product release e.g version 10 for this release.

Minor number is three digits, in steps of 100 e.g. 10.100, 10.200 etc., indicating a maintenance release, or three digits in steps of 1, indicating a service release. E.g. 10.201, 10.202, 10.203 etc. As an example, 10.201 is a service release to maintenance release 10.200.

Build number is incremented automatically by the PROIV build infrastructure each time a build of the software takes place and so the higher the number the more recent the build. This number is reset to zero each time the minor version changes.

2 Installing Server Software on Windows

Version 10 has a similar product installer from previous versions of V9 with only one panel with which to submit configuration details. The installation process is similar on all platforms. On Windows the installation must be carried out by a user with Administrator privileges.

The installation proceeds through a set of panels, which you move forward or backward using **Previous** and **Next** buttons. If you wish to abort the installation, then click **Cancel** at any stage during installation. To start the installation process, double-click the **PROIV Version 10 Windows installation executable**.

2.1 Upgrading an existing installation

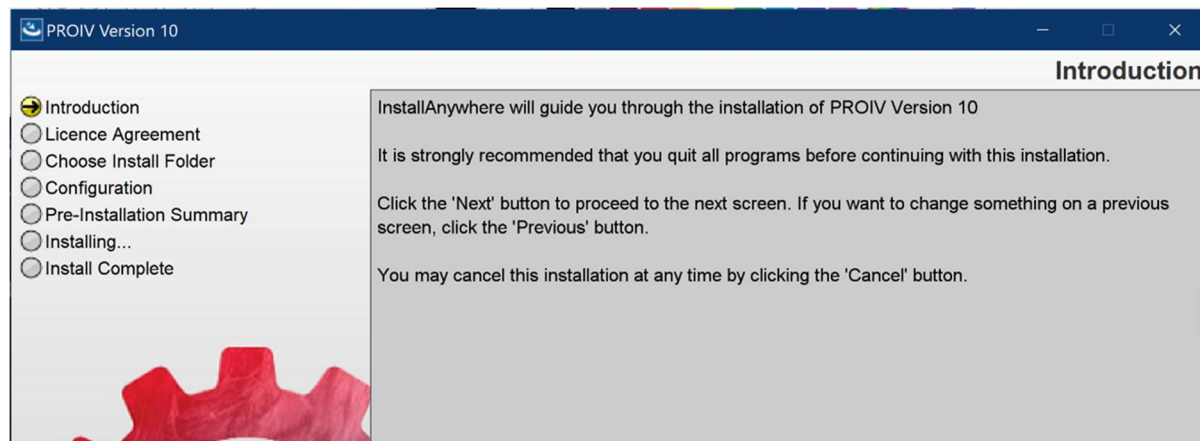
2.1.1 Upgrading from Version 9 to Version 10

PROIV version 10 is not gen compatible with any version 9 releases of PROIV. A mandatory Regen of all code is required when moving to PROIV version 10. If you are upgrading from v9 to v10, you must take a backup of your boots folder; export your application source code and import into v10 and then perform a regen of the application. Additionally, all existing set up options will need to be reconfigured using the PROIV Dashboard.

2.1.2 Upgrading from a previous release of version 10

The current PROIV version 10 is gen compatible with previous versions of version 10 releases. A mandatory Regen is not required when upgrading. When upgrading version 10 it is recommended you take a backup of your boots folder by exporting your application source code and importing into the upgraded v10 and then perform a regen of the application. All existing set up options will remain as previously configured.

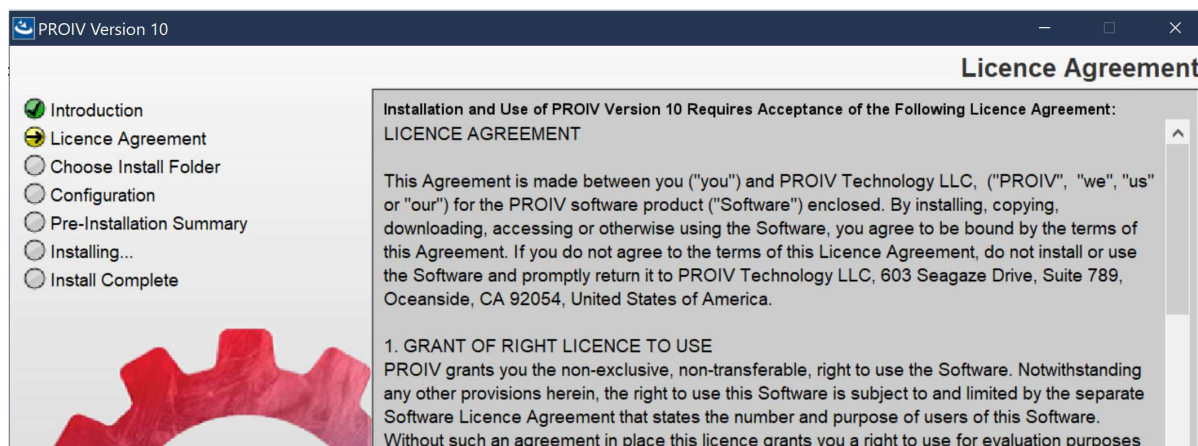
2.2 Introduction Panel



Click **Next**.

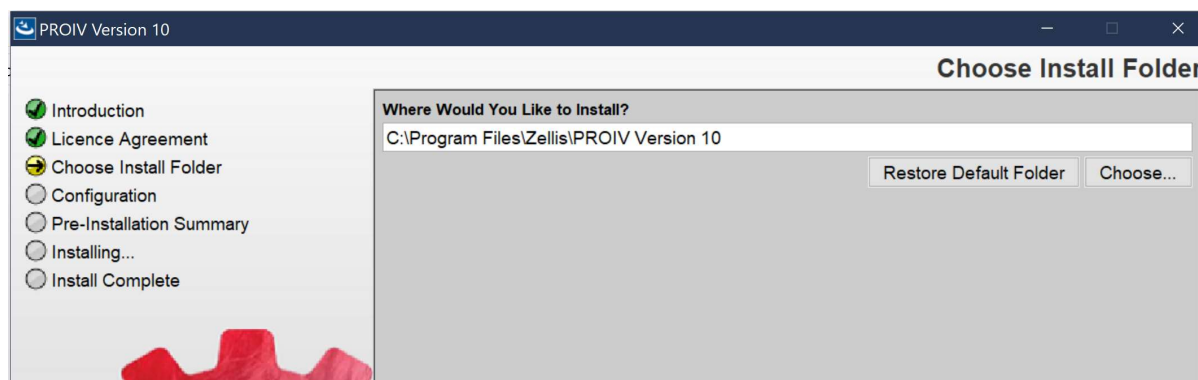
2.3 Licence Agreement

Read through the agreement and then click I accept the terms of the Licence Agreement and click Next.



Note: You cannot accept the agreement without scrolling to the bottom; this ensures you have read the terms of the Licence Agreement.

2.4 Installation Location



Click Choose to change the destination folder for the installation and click Next.

Notes:

1. PROIV Version 10 does not support the upgrade of an existing PROIV Version 9 installation. However, you can install PROIV Version 10 alongside an existing PROIV Version 9 installation.

Network Port Configuration

Web Application Server Ports	
System Services Http	10801
Application Services Http	10802
Client Services Http	10804
Analytic Services Http	10805
Licence Service Http	10806
System Services Https	10811
Application Services Https	10812
Client Services Https	10814
Analytic Services Https	10815
Licence Service Https	10816
Virtual Machine Ports	
Client Virtual Machine	10023
Gateway Virtual Machine	10833

Configure PROIV as follows:

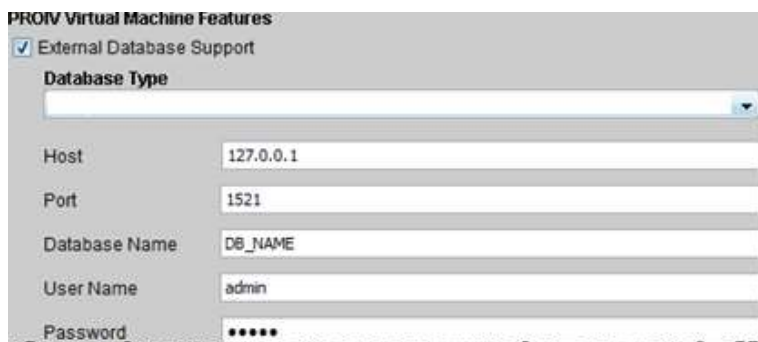
Under Web Application Server Ports group and Virtual Machine Port group, enter the TCP/IP listening port numbers for all port types. All these ports must be unique. By default, the installation process offers ports which are not in use at the time, the panel appears.

Note: The default PROIV Version 10 ports do not overlap with PROIV Version 9 ports.

After submitting the panel, the installer will notify you if the port number entered is in use. You must re-enter the configuration information in this instance.

To enable support for external databases such as Oracle, PostgreSQL or SQL Server, select the **External Database Support** checkbox.

2.5 Initial Database Configuration



On the Database Type list, select the required database. For example, Oracle or PostgreSQL.

In the Host box, enter the host name or the IP address of the database server.

In the Port box, enter the port number the database server is configured to use.

In the Database Name box, enter the name of the database.

Enter the Username and Password for the database in the respective boxes.

Note: If you do not configure external database during installation but want to connect to the external database after installation, login to PROIV Dashboard and update the database configuration as required. Refer to PROIV Help for more information.

Note: The installer does not validate any of the parameters entered on this screen.

Click **Next**.

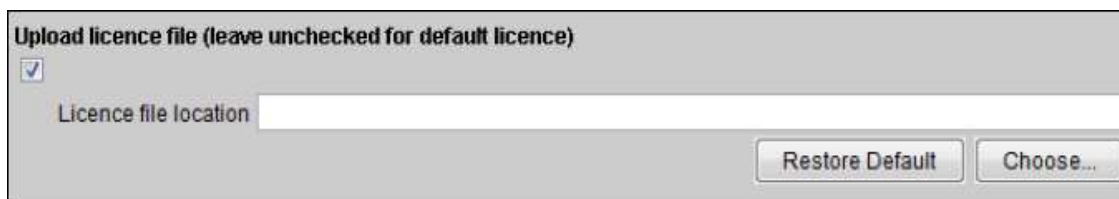
2.6 Windows Service Installation



It is possible to install the PROIV services on Windows as the Local Service account there by reducing the access rights given to the service. If you wish to do this then select “Local Service” and the services will be installed with the local account known as NT Authority/LocalService.

The files in the PROIV installation will have their permissions updated to allow this account to be able to read and write to them. It is important to note that if your application uses other interfaces and directories then it is your responsibility to ensure that those external interfaces give the LocalService account sufficient permission to continue to operate with them.

2.7 Provide License During Installation



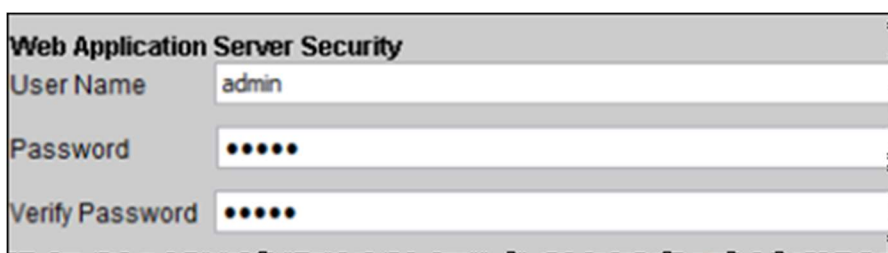
Note: The installer will advise if any incorrect configuration parameters have been entered.

You will be invited to correct the relevant parameters. The installation will not proceed unless the correct parameters are entered.

PROIV Version 10 installs a default licence. However, if you want to choose from a location, click **Choose** and locate the licence file.

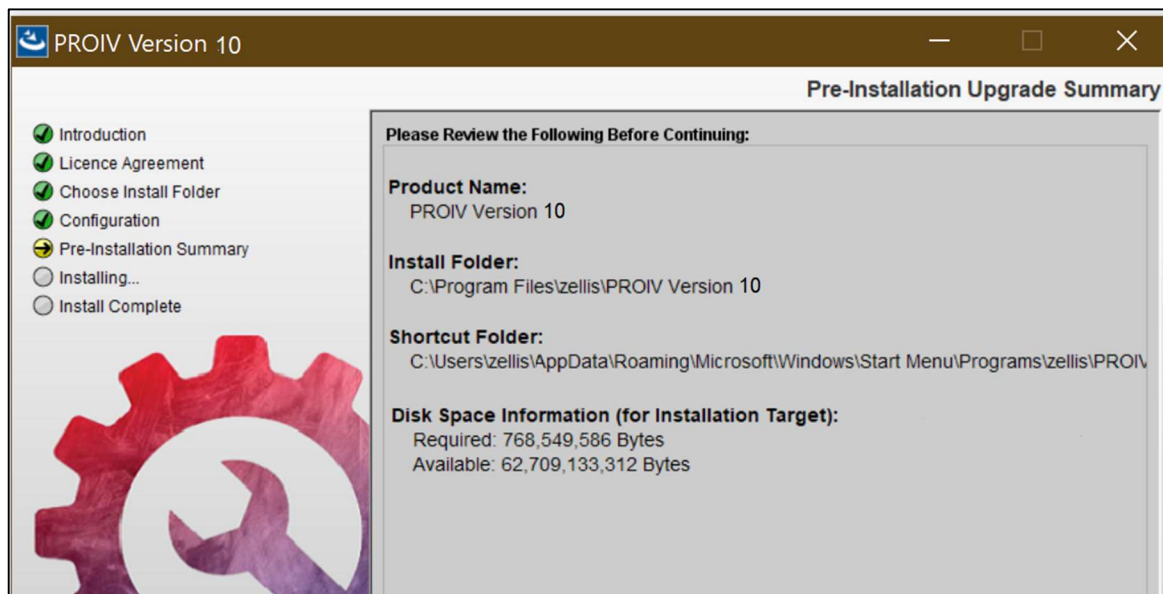
Note: Earlier PROIV Versions' licence files cannot be used with PROIV Version 10.

In the Web Application Server security group, you can setup the security for the web applications served as part of the PROIV installation. The username and password entered are then configured for each of the applications in your web application. However, you can change them after installation.



2.8 Pre-Installation Summary

The summary of where the software is installed appears. Click **Next**.



On successful installation, the PROIV Version 10 – Install Complete panel appears and may prompt to restart the system. If such a prompt appears you can either restart the system immediately or later; however, it is recommended to restart the system before using PROIV in this instance.

3 Installing Server Software On UNIX

PROIV Version 10 server installation on UNIX platforms uses a command line interface rather than graphical one; the installer is provided as a binary executable and requires a minimum of Java 8 Runtime Environment installed on your system before starting to install PROIV Version 10.

Refer to the PROIV Release Notes associated with each release to get more information on the supported Java Runtime Environments (JRE) and locations where the installer searches for a JRE.

You can run the installer without any additional command line arguments and no longer need to do so as the root user. Installing as a user other than root requires additional steps these are covered below in section 3.11. For example on a Linux 64-bit platform:

```
./proiv10.xxx.xx_linux_x86-64.bin
```

If PROIV is already installed on the server and you are performing a side by side install or an upgrade then ensure the PROIV and its services are not running before doing another install or upgrade.

The installation takes the form of an interactive console installation where you are prompted for installation location and various configuration parameters; once all information has been entered the product is installed and configured with the specified parameters.

The following sections detail an installation example on Linux; other UNIX platforms follow the same process.

3.1 Upgrading an existing installation

3.1.1 Upgrading from Version 9 to Version 10

PROIV version 10 is not gen compatible with any previous versions of PROIV. A mandatory Regen of all code is required when moving to PROIV version 10. If you are upgrading from v9 to v10, you must take a backup of your boots folder; export your application source code and import into v10 and then perform a regen of the application. Additionally, all existing set up options will need to be reconfigured using the PROIV Dashboard.

3.2 Starting the Installation Process

Open the command prompt.

The installation on UNIX is started by running the distribution. Once started the installer will locate a suitable JRE and display the following screen.

The introduction section explains how to control the installation process.

```

Launching installer...

=====
PROIV Version 10                               (created with InstallAnywhere)
=====

Preparing CONSOLE Mode Installation...

=====

Please Wait
-----

=====

Please Wait
-----

=====

Introduction
-----

InstallAnywhere will guide you through the installation of proiv_version_10
of the PROIV 10.0.0.0 distribution.

It is strongly recommended that you quit all programs before continuing with
this installation.

Respond to each prompt to proceed to the next step in the installation.  If
you want to change something on a previous step, type 'back'.

You may cancel this installation at any time by typing 'quit'.

PRESS <ENTER> TO CONTINUE: █
  
```

Press **Enter**.

3.3 Accepting the Licence Agreement

```
=====
Licence Agreement
=====

Installation and use of proiv_version_10 requires acceptance of the following
Licence Agreement:

LICENCE AGREEMENT

This Agreement is made between you ("you") and PROIV Technology LLC,
("PROIV", "we", "us" or "our") for the PROIV software product ("Software")
enclosed. By installing, copying, downloading, accessing or otherwise using
the Software, you agree to be bound by the terms of this Agreement. If you do
not agree to the terms of this Licence Agreement, do not install or use the
Software and promptly return it to PROIV Technology LLC, 603 Seagaze Drive,
Suite 789, Oceanside, CA 92054, United States of America.

1. GRANT OF RIGHT LICENCE TO USE
PROIV grants you the non-exclusive, non-transferable, right to use the
Software. Notwithstanding any other provisions herein, the right to use this
Software is subject to and limited by the separate Software Licence Agreement
that states the number and purpose of users of this Software. Without such an
agreement in place this licence grants you a right to use for evaluation
purposes only.

2. RESTRICTIONS
If you are an entity, you shall supervise and control the use of the Software
and ensure that the Software is used by your employees and representatives in
accordance with the terms of this Agreement and the separate Software Licence
Agreement entered into between you and PROIV.

PRESS <ENTER> TO CONTINUE: █
```

The set of prompts allows you to scroll through the sections of the Licence agreement; you must read, and press enter to scroll through each section.

Once the licence agreement has been displayed you can choose to accept it to continue with the installation process. If you do not accept the agreement then enter **N** and the installation process will terminate.

3.4 Specifying Installation Directory

Specify the folder into which PROIV is installed or alternatively press **Enter** to accept the default folder. Note, this has changed, to reflect the change in name of the PROIV holding company to Zellis

```
=====
Choose Install Folder
=====

Where would you like to install?

    Default Install Folder: /opt/zellis/proiv_version_10

ENTER AN ABSOLUTE PATH, OR PRESS <ENTER> TO ACCEPT THE DEFAULT
: █
```

3.5 Specifying a Licence File During Installation

Enter the location for your Licence File. If you do not have a License File, press **Enter** to install the default licence.

```
=====
Licence File Location
=====

Please type the full path name of a valid PROIV Version 10 Licence file or
just press enter to install the default Licence

Licence file location : █
```

3.6 Network Port Configuration

The installer then moves on to setting up the network listening ports, these are presented sequentially, either accept the default or specify the port you wish to use; for example.

```

Analytic Services Http (Default: 10805):

=====
Web Application Server Ports
-----

System Services Http (Default: 10801):

=====
Web Application Server Ports
-----

Licence Services Http (Default: 10806):

=====
Web Application Server Http Ports
-----

Application Services Http (Default: 10802):

=====
Web Application Server Https Ports
-----

Application Services Https (Default: 10812): █

```

Enter the TCP/IP listening port numbers for all port types. All these ports must be unique. By default, the installation process offers ports which are not in use at the time.

Note: The installer will notify you if the port number entered is in use. You must re-enter the configuration information in this instance.

3.7 External Database Configuration

To configure an external database, enter Y and specify the configuration details; the following screenshot shows how to configure the Oracle external database.

```
PROIV External Database Configuration
-----

Please indicate the database type

->1- Oracle
   2- PostgreSQL
   3- SQLServer

ENTER THE NUMBER FOR YOUR CHOICE, OR PRESS <ENTER> TO ACCEPT THE DEFAULT: 1

=====
PROIV External Database Configuration
-----

Please enter the name of database

Database name : DBName

=====
PROIV External Database Configuration
-----

Please enter the name of the database host

Host name : DBHost

=====
PROIV External Database Configuration
-----

Please enter the database listener port

Port number (Default: 1521): █
```

3.8 Select Developer or Administrator

Select the PROIV Environment as either Developer or Administrator, the default is Developer.

```
=====
PROIV Environment
-----

Please choose between Developer or Administrator Environment

->1- Developer
   2- Administrator

ENTER THE NUMBER FOR YOUR CHOICE, OR PRESS <ENTER> TO ACCEPT THE DEFAULT: █
```

To optionally install the PROIV Version 10 demonstration files and functions, enter 1.

```
=====
Install PROIV Demonstration sample applications
-----

Please select the option below to have PROIV demonstration applications
installed

->1- Install Demonstration Files
   2- Not Required

ENTER THE NUMBER FOR YOUR CHOICE, OR PRESS <ENTER> TO ACCEPT THE DEFAULT: █
```

3.9 Web Application Server Security

To configure PROIV web application security, enter the user name and password (twice); the credentials will be required to access the PROIV Version 10 Dashboard.

```
=====
Web Application Server Security
-----

Please enter a user name

User name (Default: admin): admin

=====

Web Application Server Security
-----

Please enter a password:

=====

Web Application Server Security Password Verification
-----

Please repeat the password for verification:
```

3.10 Installation Summary and Install

The installation summary appears with the installation location and the space required, press **Enter** to continue.

```
=====
Pre-Installation Summary
-----

Please Review the Following Before Continuing:

Product Name:
    proiv_version_10

Install Folder:
    /opt/zellis/proiv_version_10

Link Folder:
    /opt/zellis/_proiv_version_10_

Disk Space Information (for Installation Target):
    Required:  1,100,975,980 Bytes
    Available: 35,376,406,528 Bytes

PRESS <ENTER> TO CONTINUE: █
```

Press **Enter** twice to begin the installation and configuration.

The software is installed and configured. Press **Enter** to exit the installation process.

```
=====
Installation Complete
-----

Congratulations. proiv_version_10 has been successfully installed to:

    /opt/zellis/proiv_version_10

PRESS <ENTER> TO EXIT THE INSTALLER: █
```

3.11 Installation differences when not installing as root

If you choose to install as the non-root user then the first screen you will be presented with is a credentials acceptance dialog; this is to remind you that you are not running as root and that additional steps are required to be run as root to complete the installation process.

Note: When installing on IBM AIX as a non-root user the installation command requires additional parameters to specify the Java Virtual Machine (JVM) to use during the installation process. Add the following to your usual command line, including a single space character:

LAX_VM <path to java virtual machine>

```
=====
PROIV Version 10 Installer Credentials
=====

The installation is progressing without root privileges. After this process is
completed, there will be additional steps to be performed manually with root
privilege for the installation to work as expected.

->1- Continue to Next
   2- Cancel

ENTER THE NUMBER OF THE DESIRED CHOICE, OR PRESS <ENTER> TO ACCEPT THE
DEFAULT: 1
```

Enter 1 to accept there are additional steps and to continue with the installation.

Entering 2 will cancel the installation and allow you to re-run it as root if that is your wish.

The rest of the installation is as per earlier sections. Once the files are loaded and the configuration settings applied you will be presented with an additional information panel.

```
=====
Installation Complete
=====

This installation of proiv_version_10 was not performed as root, you need to
run /home2/pp/proiv10.0/bin/service.sh as root to install the PROIV services on
your operating system.

PRESS <ENTER> TO EXIT THE INSTALLER: █
```

To complete the installation, you need to run the script service.sh, this can be found in the bin directory underneath the root of the installation. To install the services run the script as root and the services will be installed for your chosen operating system; for Linux this is systemd for AIX and Solaris it will be via init.d. The example below is from RedHat Linux.

```
[root@p4dinstall ~]# cd /home2/p4/proiv /
[root@p4dinstall proiv ]# bin/service.sh
Usage: bin/service.sh [install | remove]
        install - Installs PROIV services from current installation directory
        remove  - Removes *any* currently installed PROIV services on the system
[root@p4dinstall proiv ]# bin/service.sh install
Stopping services.....
Copying isamlog and isamdef into /etc
Installing services from /home2/p4/proiv
```

On RedHat with systemd you can list the services as follows:

```
[root@p4dinstall proiv ]# systemctl list-units p4*
UNIT                                LOAD    ACTIVE SUB    DESCRIPTION
p4analytics.service               loaded active running PROIV V10Analytic Services
p4appcon.service                  loaded active running PROIV V10Application Connector
p4clicon.service                  loaded active running PROIV V10Client Connector
p4licensing.service               loaded active running PROIV V10Licence Services
p4system.service                  loaded active running PROIV V10System Services
```

Note that if you install on Linux which does not support systemd then the services will not be installed.

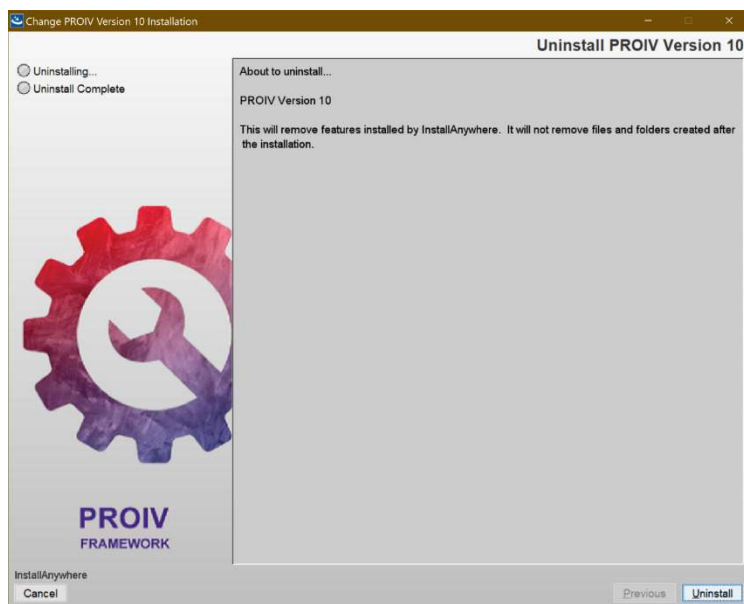
3.11.1 File Permissions

When not installed as root, the PROIV installation files are owned by the user running the installation process. If you change permissions on files and directories, then you need to ensure that the PROIV components which access them can do so, otherwise the installation may generate errors or warnings.

4 Uninstalling Server Software on Windows

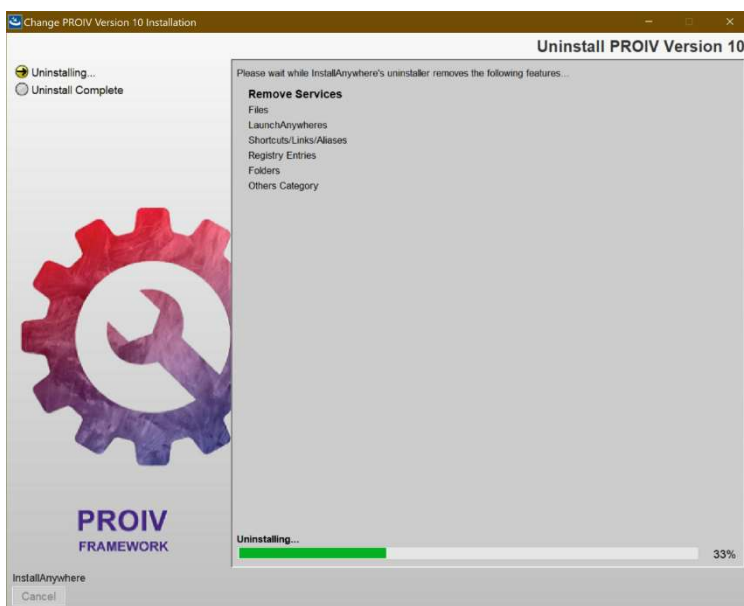
Follow the steps to uninstall the server software on Windows.

Click **Start > All Programs > Zellis > PROIV Version 10** and click **Uninstall_PROIV Version 10**.



Click **Uninstall**.

The progress on the uninstall process appears in the panel.



A pop-up window appears to confirm your wish to retain the bootstraps folder. If you wish to retain the bootstraps, click **Yes**.



When the uninstall process completes, it reports a list of all folders where it was unable to remove all the content. These folders contain files which are added outside of the installation process. For example, they may contain log files which are created by PROIV during execution, this is perfectly normal.

5 Uninstalling Server Software On UNIX

To uninstall PROIV on a UNIX system, login as root (or whatever user id has permissions to perform the necessary file delete operations), navigate to the top-level folder of your PROIV installation; if you did a default install, then /opt/zellis/_proiv_version_10.

Execute the uninstall command as appears in the following snapshot and once the uninstall process starts, press **Enter** to continue with the product removal process.

```
[root@mvserver10 _proiv_version_10]# ./Uninstall_proiv_version_10
=====
proiv_version_10                                (created with InstallAnywhere)
=====

Preparing CONSOLE Mode Uninstallation...

=====
Uninstall proiv_version_10
=====

About to uninstall...

proiv_version_10

This will remove features installed by InstallAnywhere. It will not remove
files and folders created after the installation.

PRESS <ENTER> TO CONTINUE: 
```

If you wish to keep the bootstraps, enter 1.

```
=====
Uninstalling PROIV Version 10
=====

Do you want to retain the bootstraps folder
/opt/zellis/proiv_version_10/virtual_machine/boots ?

->1- Yes
   2- No

ENTER THE NUMBER OF THE DESIRED CHOICE, OR PRESS <ENTER> TO ACCEPT THE
DEFAULT: 
```

The uninstallation of the software is now completed. If items could not be uninstalled the message "Some items could not be removed" will be displayed and these will have to be removed manually.

```
*
*****
*****
*****
*****

=====
Uninstall Complete
=====

All items were successfully uninstalled.
```

6 Client Software

6.1 Client Installation

The PROIV MFC Client and Forms Designer are distributed as a single installation executable as per previous releases of the product. To install the software, double-click the installation executable.

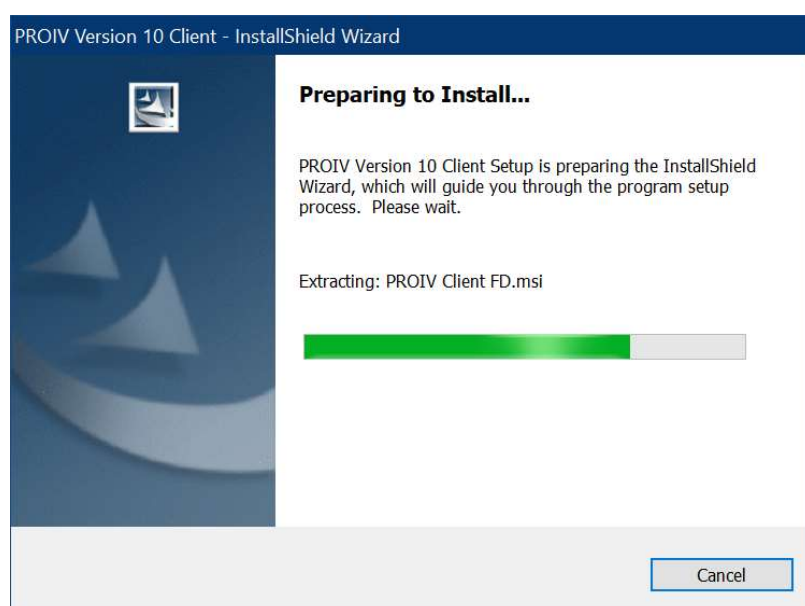
The installation takes the form of a set of wizards, which you move forward or backward by using **Previous** and **Next** options. However, if you wish to abort the installation then click **Cancel**.

6.1.1 Upgrading

We would recommend uninstalling any previous versions of the MFC client prior to installing the new 10 but if you wish to keep previous settings you can export the HKEY_CURRENT_USER/Software/Zellis branch to a registry file and re-import when installation is complete. This requires administrator access and should only be carried out by competent individuals.

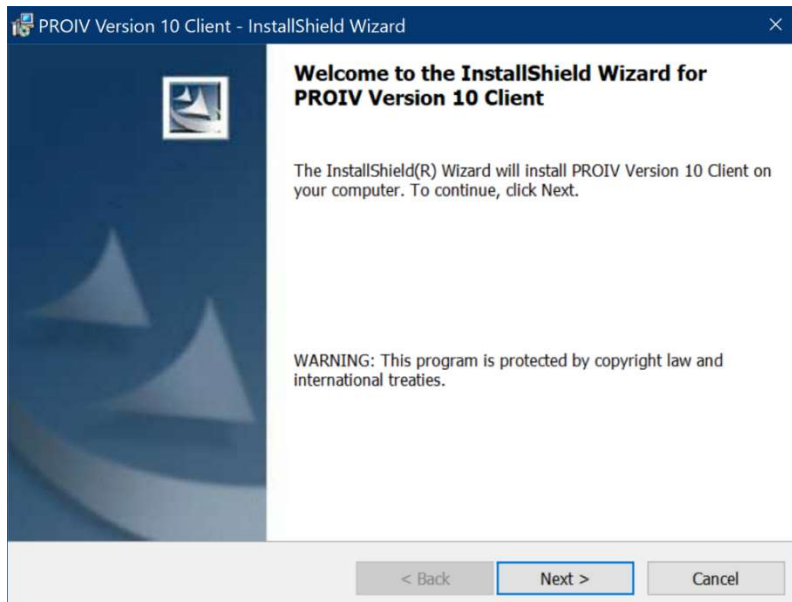
6.1.2 Installer Preparation

A window appears that indicates the installer is preparing to install and indicates the progress through this preparation. The only option available to the user at this time is Cancel, which if pressed will cancel the installation process.



6.1.3 Installer Commencement Panel

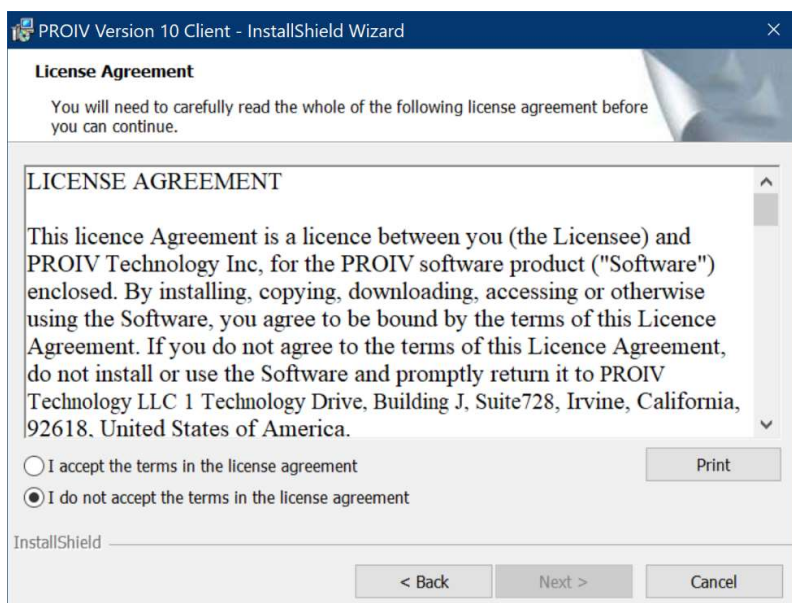
When the installer preparation is complete the welcome panel appears:



Click **Next** to continue with the installation or cancel to abandon the installation.

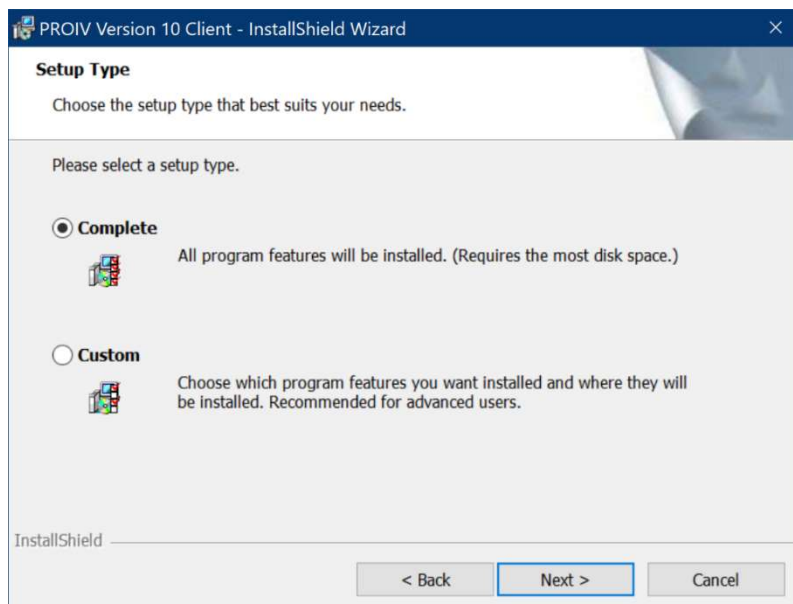
6.1.4 Client Licence Agreement

To install the software, you must accept the licence agreement, scroll the licence agreement to the bottom and click "**I accept the terms of the Licence Agreement**". Note, you cannot select this without scrolling to the bottom of the agreement; this ensures you have read the terms of the licence.



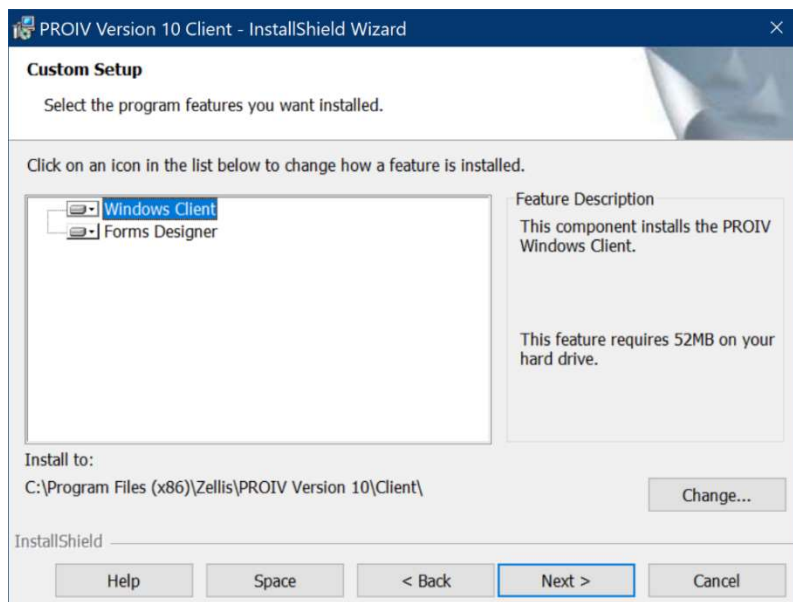
6.1.5 Installation Type

The PROIV MFC Client can be installed as one of the two types 'Complete' and 'Custom'. **Complete** installs the PROIV MFC Client with all available features whereas **Custom** installs the selected features.



6.1.6 Custom Setup Panel

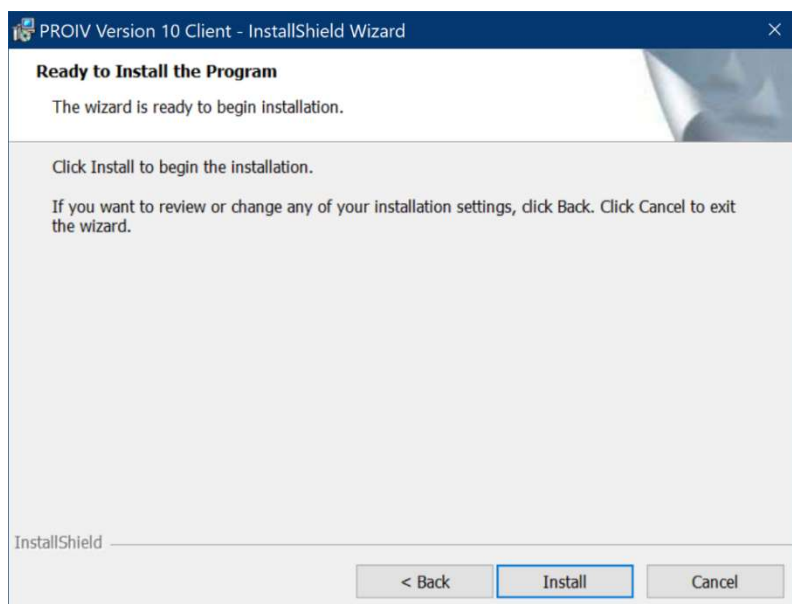
This wizard appears only if you select 'Custom' in the previous panel. Select the required components for installation.



Note: The default installation folder has been changed to reflect the new name of the PROIV holding company (Zellis). It is recommended that you perform an uninstall of all previous versions of the Client (installed as NorthgateArinso) prior to installing version 10.

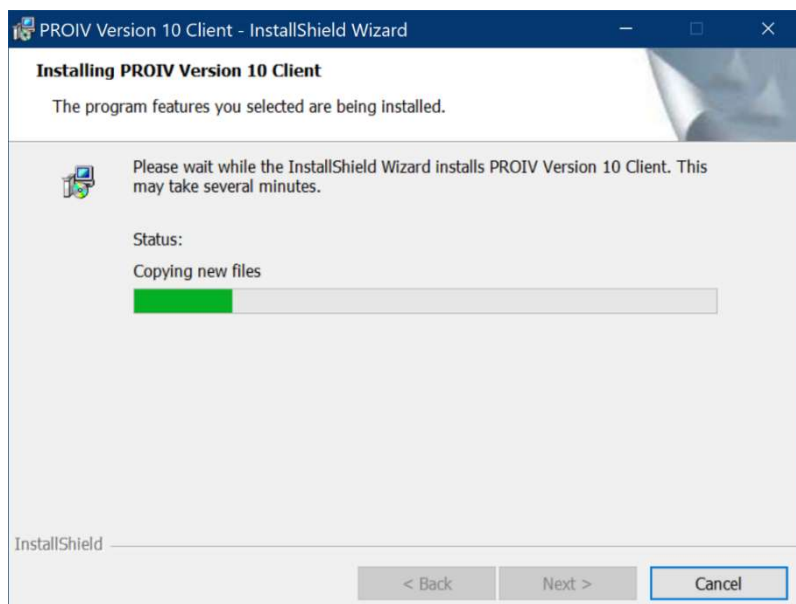
6.1.7 Ready To Install Panel

Click **Install** to begin the installation, **Back** to navigate to the previous wizard panels or **Cancel** to abandon the installation.



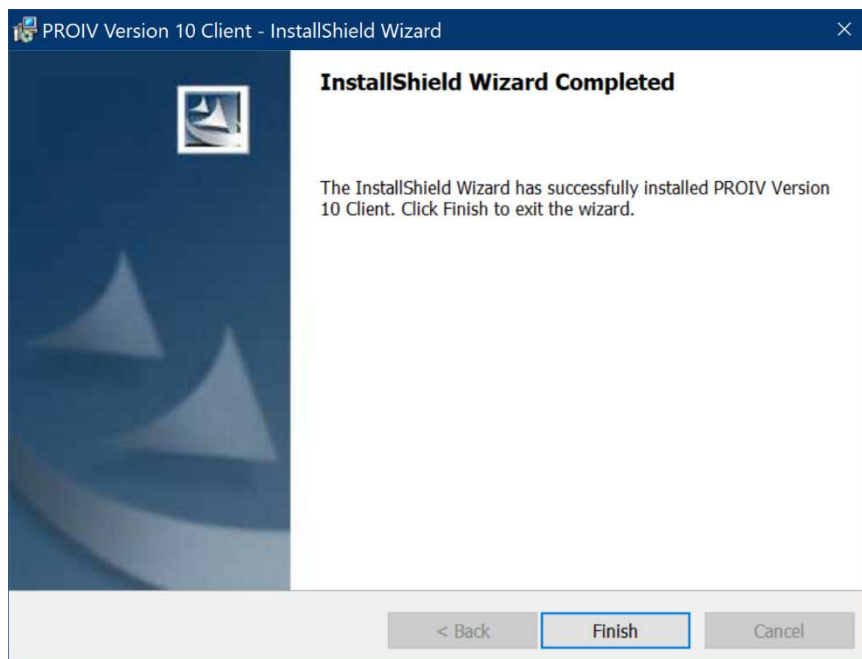
6.1.8 Installation Progress

The status bar indicates the progress of the installation.



6.1.9 Installation Complete

When the installation is complete, the following screen appears. Click **Finish**.



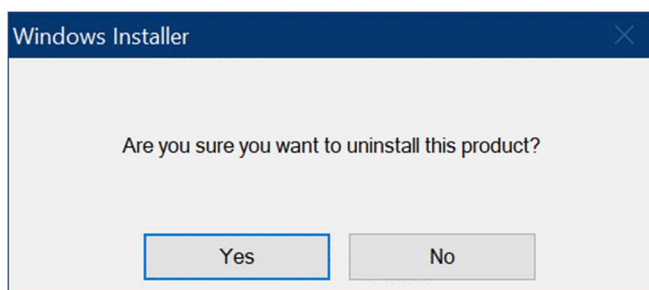
6.2 Client Uninstallation

Uninstalling the PROIV client is a simple process, ensure you are logged in as a user with the correct access rights and then navigate to the Zellis/PROIV Version 10 Client folder from the Windows Start Menu, select Uninstall PROIV Client.

The uninstall will start and display a small window showing the uninstall progress, once complete the client will have been removed from the system.

6.2.1 Confirmation panel

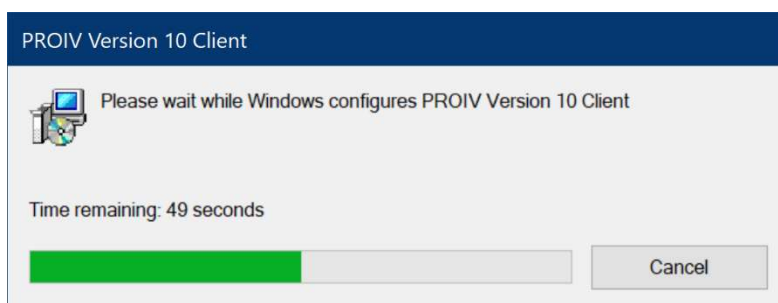
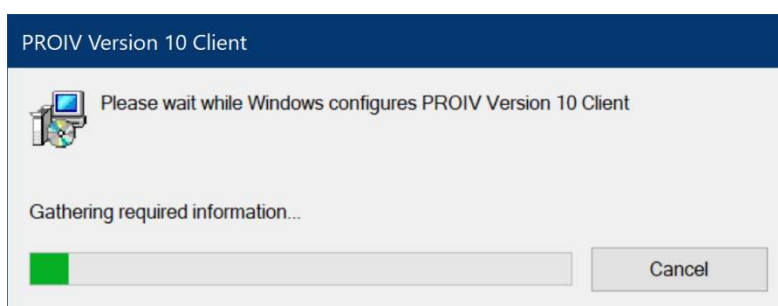
The uninstall process commences by displaying a window, which enquires confirmation that the intention is to uninstall the PROIV MFC Client



Click **Yes** to continue with the uninstall or No to cancel the uninstall.

6.2.2 Uninstall Progress

The uninstall process then goes through a number of stages none of which require any user interaction unless you wish to cancel.



When the uninstall process is complete the uninstaller closes without user interaction.

7 Document Control

Document Information

Information	
Document Id	V10.900_IG
Document Owner	Zellis Holdings Ltd.
Issue Date	September 2024
Last Saved Date	02 September 2024

A red triangle pointing downwards, positioned above the 'z' of the word 'zellis'.

zellis

**For further information please
visit zellis.com**

EKB 0000000 CSCB A0000 XXX 0000