



## **Release Notes**

**PROIV v7.1.70.0**

---

PROIV is a registered trademark of NIS UK Ltd.

Acrobat Reader is a registered trademark of Adobe Systems Incorporated.

AIX is a registered trademark of IBM.

IBM Informix C-ISAM is a registered trademark of IBM Informix.

Firefox is a registered trademark of the Mozilla Foundation.

Linux is a registered trademark of Linux Foundation.

Microsoft, Microsoft Windows, MS Windows, Microsoft Internet Explorer, Microsoft Windows Server 2008, Microsoft Window 7, Microsoft Windows Vista, Windows XP, Microsoft Word, MS Word, and Visual Basic for Applications (VBA) are registered trademarks of Microsoft Corporation.

OpenVMS, HP-UX, Tru64 Unix are all trademarks of Hewlett-Packard Development Company.

Sun Solaris, Java and Oracle are registered trademarks of Oracle Corporation.

UNIX is a registered trademark of The Open Group.

All marks and product names referred to in this document are trademarks or registered trademarks of their respective owners.

Internet: <http://www.proiv.com>

Email: [provisupport@ngahr.com](mailto:provisupport@ngahr.com)

© 2014 PROIV – NorthgateArinso UK Ltd All rights reserved.

No part of this document may be reproduced, transmitted, adapted, stored in any retrieval system or translated into any language in any form without the prior written permission of PROIV Technology LLC.

NGA Human Resources is a trading name of NorthgateArinso UK Limited, Peoplebuilding 2, Maylands Avenue, Hemel Hempstead, Herts, HP2 4NW, UNITED KINGDOM. Company registered number: 1587537, place of registration: England.

**THE AMERICAS**  
PROIV Technology LLC/  
NorthgateArinso  
1 Technology Drive  
Building J Suite 728  
Irvine, CA 92618  
USA  
Tel: +1 (949) 748-7300  
Fax: +1 (949) 748-7301

**EMEA**  
NorthgateArinso UK Limited  
Peoplebuilding 2  
Peoplebuilding Estate  
Maylands Avenue  
Hemel Hempstead  
Herts, HP2 4NW  
UK  
Phone: +44 (0)1442 204501

PROIV Release: v7.1.70.0

Document Revision: 2.2

Published: 9th October 2015

---

# Table of Contents

<b>Table of Contents</b> .....	<b>i</b>
<b>Document History</b> .....	<b>1</b>
<b>Important Information</b> .....	<b>3</b>
Product Versioning .....	3
Online Documentation .....	3
Aurora Help .....	4
PROIV Control Panel .....	6
PROIV Lexicon and Statistics.....	7
Change Management .....	7
PROIV Developer Version 2 File Definitions .....	8
PROIV Windows Server 64-bit .....	8
PROIV Windows Virtual Machine and Shared Memory.....	8
<b>Installing PROIV Version 7</b> .....	<b>11</b>
Concurrent Version 6 and Version 7.....	11
Earlier Version 7 to Version 7.1 .....	11
Installation Location .....	11
pro4v7.ini File .....	11
Registry Keys .....	12
Licence Files.....	12
PROIV Client/Forms Designer Settings .....	12
Oracle Instant Client .....	12
Installing Aurora .....	12
<b>Items Supported</b> .....	<b>13</b>
Supported Client Platforms .....	13
Client and VM Compatibility.....	13
Supported Web Browsers.....	13
<b>Prerequisites</b> .....	<b>15</b>
Installation Process.....	15
Supported Java Version for PROIV Version 7.1.53.0 and beyond.....	15
C++ Standard Template Libraries.....	15
<b>HP-UX</b> .....	<b>16</b>
Supported Versions .....	16
Installation Process.....	16
Minimum Java Requirements .....	16
Java Environment Variables and Search Paths .....	16
HP-UX IA64 – HP Java (ignores PA-RISC Java installations).....	16
Minimum C/C++ Standard Template Libraries Requirements .....	17
Required Patch .....	17
Installation Tasks .....	17
File System Support.....	17
<b>IBM AIX</b> .....	<b>18</b>

Supported Versions .....	18
Installation Process.....	18
Minimum Java Requirements .....	18
Java Environment Variables and Search Paths .....	18
Minimum C/C++ Standard Template Libraries Requirements.....	19
File System Support.....	19
Installation Tasks .....	19
<b>Linux.....</b>	<b>20</b>
Supported Versions .....	20
PostgreSQL and unixODBC .....	20
unixODBC Configuration.....	20
Minimum Java Requirements.....	20
Java Environment Variables and Search Paths .....	21
Minimum C/C++ Standard Template Libraries Requirements.....	22
File System Support.....	22
Additional Information .....	22
Installation Tasks .....	22
<b>Microsoft Windows .....</b>	<b>23</b>
Windows 32-bit Supported Versions.....	23
Windows 64-bit Supported Versions.....	23
Installation Process.....	24
Installation Tasks .....	25
PROIV Windows Server 64-bit Differences.....	25
Windows 8.1 / Internet Explorer 11 .....	25
Java 7 .....	25
PostgreSQL Version 9 .....	26
<b>Sun Solaris (SPARC) .....</b>	<b>27</b>
Supported Versions .....	27
Installation Process.....	27
Minimum C/C++ Standard Template Libraries Requirements.....	28
File System Support.....	28
<b>Release Dates and Versions .....</b>	<b>29</b>
Build 7.1.70.0 - Release Date: 30 <sup>th</sup> September 2015 (AIX, Linux, Solaris, Windows).....	29
Build 7.1.67.0 - Release Date: 30 <sup>th</sup> September 2015 (HPUX IA64 only).....	30
<b>New Functionality in this Release .....</b>	<b>31</b>
JavaScript Control Maintenance.....	31
Open Client Timeout .....	33
NULL Handling in SQL Server .....	33
Rollback Errors.....	34
<b>EOL Notifications .....</b>	<b>37</b>
Please see important announcement regarding PROIV 7.1 at <a href="http://www.proiv.com/press_room/496_proiv_version_7_end_of_life_statement">http://www.proiv.com/press_room/496_proiv_version_7_end_of_life_statement</a> .....	37
HP OpenVMS Alpha .....	37
HP-UX .....	37
<b>Items Fixed .....</b>	<b>37</b>
PROIV Release 7.1.58.0 .....	37

PROIV Release 7.1.58.1 .....	37
PROIV Release 7.1.58.2 .....	37
PROIV Release 7.1.58.3 .....	37
PROIV Release 7.1.58.4.0 .....	38
PROIV Release 7.1.64.0 .....	38
PROIV Release 7.1.70.0 (7.1.67.0 for HPUX IA64) .....	38
PROIV Developer 7.1.47.0 .....	39
PROIV Developer 7.1.49.0 .....	39
<b>Known Issues.....</b>	<b>39</b>
PROIV Service Manager and Microsoft Windows KB982802 and KB2360937 Patches .....	39
Number of PROISAM files exceeded .....	39
Issues with Build Process when PROIV Developer not upgraded to latest version .....	40
Open Client browser messages displayed on timeout .....	41
Secure Connections to Web Applications may not work.....	41

## Document History

---

Doc Rev	Date of Update	For PROIV Version	Update Description
1.0	11 <sup>th</sup> October 2011	7.1.9.0	Updated document for PROIV Version 7.1.9.0 PR release.
1.1	2 <sup>nd</sup> November 2011	7.1.10.0	Updated the <b>Online Documentation</b> section to include details of the Security Warning message box that is displayed when accessing the Aurora Help on Microsoft Internet Explorer. Updated document for PROIV Version 7.1.10.0 release.
1.2	16 <sup>th</sup> January 2012	7.1.15.0	Updated the <b>Online Documentation</b> section. Added 'It is important to note that the ADDITIONAL_CLASSPATH environment variable must include the full path to the JDBC JAR file used by the Lexicon including the file name.' to the <b>PROIV Lexicon and Statistics</b> section. Updated the <b>Concurrent Version 6 and Version 7</b> section to include the following text: 'Please note that the import process copies the V6 settings; you must manually edit these settings to ensure that PROIV Version 7 works as expected. For example, Version 6 Licence Server port is '5431' and must be amended to '5437' in PROIV Version 7.' Added <b>Linux zSeries and Open Client</b> section to the <b>Known Issues</b> section. Added the text: 'Also, if you are uninstalling PROIV on Windows 7, it is recommended that you right-click the Uninstall menu option and select the 'Run as Administrator' option. In addition, you must reboot after the uninstall process.' to the <b>Windows</b> section. Added <b>Installing Aurora</b> section to the <b>Installing PROIV Version 7</b> section.
1.3	11 <sup>th</sup> June 2012	7.1.32.0	Updated the <b>Supported Client Platforms</b> section with the removal of the Citrix registry entry removal paragraph from the <b>Citrix and Microsoft Windows Terminal Services</b> section. Updated the <b>Browsers</b> section by consolidating the <b>Minimum</b> and <b>Maximum</b> columns into the <b>Versions</b> column. Added Postgres SQL 9.1 support to the <b>Supported Versions</b> table in the <b>Linux, Windows 32 and 64-bit</b> sections. Added required versions of unixODBC and libodbc.so, and how to resolve the 'unable to find lib.odbc.so.x' error message.
1.4	1 <sup>st</sup> August 2012	7.1.37.0	Updated document for PROIV Version 7.1.37.0 PR release
1.5	16 <sup>th</sup> November 2012	7.1.41.0	Updated document for PROIV Version 7.1.41.0 PR release
1.6	10 <sup>th</sup> January 2013	7.1.46.0	Updated document for PROIV Version 7.1.46.0 PR release Includes support for the Open Client on tablet devices.

---

<b>Doc Rev</b>	<b>Date of Update</b>	<b>For PROIV Version</b>	<b>Update Description</b>
1.7	26 <sup>th</sup> July 2013	7.1.53.0	Updated for PROIV Version 7.1.53.0 PR release
1.8	13th December 2013	7.1.55.0	Updated for PROIV Version 7.1.55.0 PR release
1.9	1 <sup>st</sup> June 2014	7.1.58.0	Updated for PROIV Version 7.1.58.0 PR release
2.0	1 <sup>st</sup> February 2015	7.1.64.0	Updated for PROIV Version 7.1.64.0 PR release
2.1	30th September 2015	7.1.70.0 (7.1.67.0 for HPUX IA64)	Updated for PROIV Version 7.1.70.0 PR release

---

## Important Information

---

PROIV Version 7 release provides new features and significant enhancements to existing PROIV product functionality. This document details the enhancements and important information required when deploying PROIV Version 7.

### Product Versioning

---

PROIV Version 7 and its constituent components are identified by a four part version number of the form a.b.c.d these numbers are defined as follows:

a - the major version number (this is 7)

b - the minor version number - this will initially be 0 each minor release will cause it to be incremented

c - the release number - every time a maintenance release is made this number will be greater than the preceding release; there is no guarantee that it will be the next sequential number

d - the build number

A maintenance release is classified as a release with a version number whose components have a higher major, minor or release number. As an example 7.0.66.0 is a higher release than 7.0.55.0, just as 7.1.30.0 is higher than both; with 7.2.12.0 being higher than all of them. All four are classified as maintenance releases of the PROIV Version 7 product.

PROIV operate a forwards fix policy. For example with the release of Version 7.1, any faults reported in Version 7.0 will be fixed in the later release.

From release 7.1.53.0 published product maintenance releases may have a non-zero build number.

### Online Documentation

---

PROIV Version 7 has a documentation set. The current documentation can be found on the PROIV website at the following URL [http://support.proiv.com/V7\\_Help/proiv\\_documentation.htm](http://support.proiv.com/V7_Help/proiv_documentation.htm) and via the **PROIV** menu...**PROIV Documentation** menu option. It is also accessible in the PROIV Client when you press F1, or by clicking the **Help** menu and clicking the **Contents** menu option.

The PROIV Version 7 documentation has been structured into the areas:

- Concepts
- Developer
- Administration

An explorer tree is available to navigate the documentation hierarchy. Additionally, each page in the documentation has a Topic ID, this ID can be used in the search tab of the documentation to uniquely locate a page. As an example, searching on Topic ID 250001 will give instructions on how to add a PROIV Gateway.

The current documentation can be found on the PROIV website at the following URL:

[http://support.proiv.com/V7\\_Help/proiv\\_documentation.htm](http://support.proiv.com/V7_Help/proiv_documentation.htm)

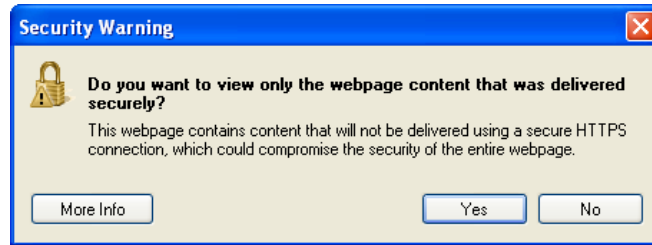


## Aurora Help

---

The full Aurora documentation is accessible in the PROIV Online Documentation (see screenshot above) and from the Aurora Help link in the top right hand corner of Aurora.

If you are running Aurora on Internet Explorer, you may see the following Security Warning message box when you click on the Help link:



The Aurora Help is located on a non-https location, therefore if you click the No button, the Help is displayed in the browser. If you click the Yes button, the Help is not displayed and a 'Navigation Cancelled' message is displayed as it is not delivered via https connection. This is expected behaviour.

All of the Aurora Menu options have context-sensitive Help displayed in the Infobar.

Screenshot displays how to display the context-sensitive Help:

The screenshot shows the 'Modify Dashboard Component' interface for the 'Activity History' widget. The interface is divided into several sections: 'Widget', 'Appearance', 'Security', and 'Feed Service'. The 'Widget' section includes fields for 'Widget Type' (ACTIVITY HISTORY), 'Widget Name' (aurora.widgets.ActivityHistory), and 'Widget Icon Class' (icon\_16\_activity\_history). The 'Appearance' section includes 'Title' (Activity History), 'Height' (139), 'Short Description' (Activity history), 'Long Description' (Activity history), and 'Collapsed' (Locked). The 'Security' section includes a table with columns 'Name', 'Description', and 'Selected', and buttons for 'Enable' and 'Disable'. The 'Feed Service' section includes 'Service Id' (Activity) and a URL.

Annotations on the screenshot include:

- 1) Click the three triangles to display or hide the Infobar (pointing to the infobar toggle).
- 2) Click the Down arrow in the Title bar (pointing to the dropdown arrow).
- 3) Select the Help option to display the Help in the Infobar (pointing to the Help option in the dropdown menu).

The right sidebar contains the following content:

**Help**

- Screen List
- Help

**Overview**

Dashboard components are discrete elements of functionality, which can be driven by a web data feed or reference a PROOV Task or Function, and are placed on the PROOV Aurora Framework. They can be user-defined or one of the core components shipped with the framework. Their implementations differ depending on their operation, but they are all driven by the same RSS architecture.

**Procedure**

To modify a Dashboard component on the PROOV Aurora Dashboard, follow these steps:

1. Click the icon. The Task Selection screen displays.
2. Select the Aurora Configuration option.
3. Select the Modify Dashboard Component option.
4. The Modify Dashboard Component screen is displayed.
5. Amend the details as you require using the following table as a guide.

**Field Descriptions**

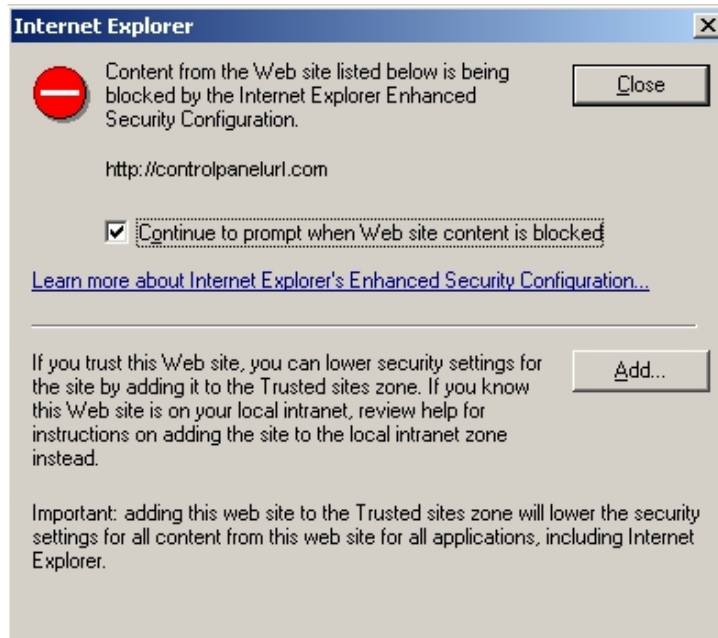
Fields	Description
<b>Widget</b>	
<b>Widget Type</b>	User-defined widget type. For example, you could set up a widget type of a calendar, favourite links, or a news feed. A75 - Mandatory
<b>Widget Name</b>	JavaScript name for the widget. The name refers to a JavaScript file. Ex:

## PROIV Control Panel

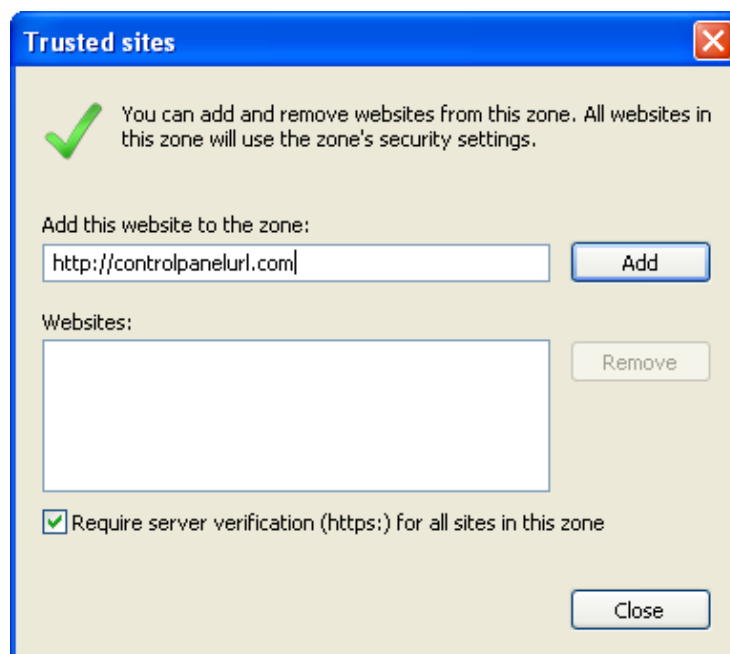
The PROIV Control Panel is a web-based tool that allows a PROIV site administrator to manage the different PROIV Version 7 components. The PROIV Control Panel is currently supported with Microsoft Internet Explorer, Google Chrome and Mozilla Firefox.

**Note: Browsers display pages differently, and therefore you may see anomalies in the way the PROIV Control Panel is rendered between browsers.**

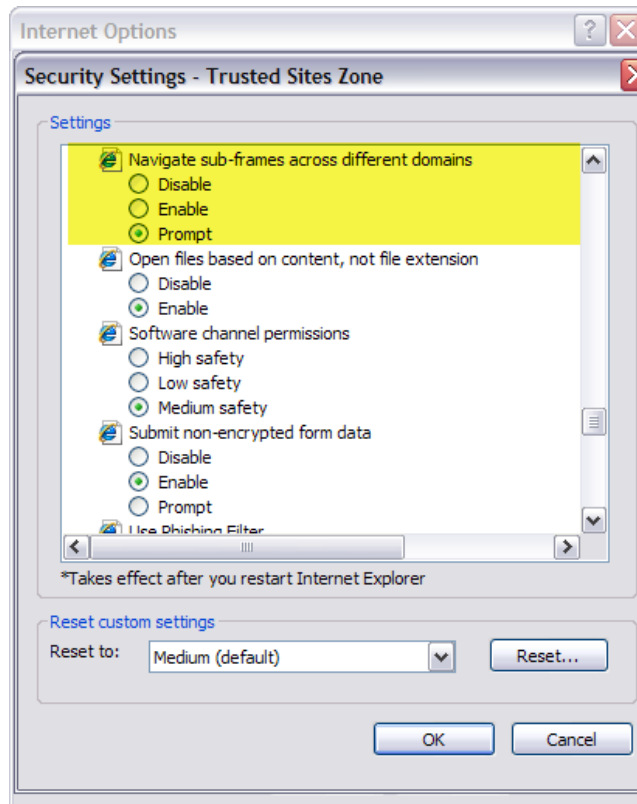
When running the PROIV Control Panel in Internet Explorer on Microsoft Windows Server 2003 or Microsoft Windows Server 2008, the tree view may not expand automatically as expected and the following message displays:



To resolve this issue, add the PROIV Control Panel's URL to the Internet Explorer's Trusted Sites list. See screenshot below:



In addition, if pop-up windows are displayed when adding elements via the PROIV Control Panel, ensure the following setting is enabled on the Security Settings window for the Trusted Sites list. See screenshot below:



## PROIV Lexicon and Statistics

---

The PROIV Version 7 Lexicon and Statistics components can utilise different relational databases as the store for the lexical information and statistical event data. PROIV uses Java Database Connectivity (JDBC) to interface with these stores; as part of the PROIV installation process, the installation will be configured to use one of Oracle, PostgreSQL or SQL Server for either the lexicon or statistics databases. It is possible to use two separate database types, one for each of the lexicon and statistics. However, this will complicate site administration and is not recommended.

It is important to note that the `ADDITIONAL_CLASSPATH` environment variable must include the full path to the JDBC JAR file used by the Lexicon including the file name.


Note that we do not redistribute the Microsoft JDBC driver for SQL Server. The PROIV Version 7 installer makes the configuration changes necessary to use this driver, but it is up to the administrator performing the installation to download and install the MS JDBC driver package, and place the JAR files containing the JDBC driver into the `javali` directory of the PROIV installation.

The database used to store the lexicon must be created using a UTF-8 encoding scheme.

Further details and download links for the Microsoft JDBC driver can be found at <http://www.microsoft.com/en-gb/download/details.aspx?id=11774>

## Change Management

---

PROIV Change Management is fully integrated into PROIV Version 7 Developer. To enable Change Management, click on the CM icon  on the PROIV Developer Toolbar. If you are going to enable Change Management, be sure that all developers are logged off the system and no development is taking place.

Following that, click the Enable CM button and enter a directory for the data files to be shared between Regions within Change Management. In addition, enter a name for the current region you are working in. Once complete the client session will exit and you should log back in. Clicking on the CM icon will now bring up the CM Change Console.

Change Management is a chargeable component of PROIV Version 7; if you wish to evaluate it, please contact [proivsales@ngahr.com](mailto:proivsales@ngahr.com).

## PROIV Developer Version 2 File Definitions

---

File Definitions for PROIV Developer Version 2 (V6.2) will work unchanged with Version 7 and can be requested via your local PROIV Support representative.

## PROIV Windows Server 64-bit

---

It is important to note the following information about the PROIV Windows Server 64-bit release:

- The 64-bit process memory model supports larger concurrent user counts.
- Supports multiple service installations allowing large user populations.
- Offers larger than 2GB process size.
- Maintains support for the major database interfaces of Oracle and SQL Server.
- Maintains PostgreSQL JDBC support for Lexicon and Statistics stores.
- Supplied with a bundled Java Runtime Environment.
- Not installable on Microsoft Windows 32-bit operating systems.

## PROIV Windows Virtual Machine and Shared Memory

---

When the Windows Virtual Machine first starts up it creates two shared memory objects backed by the system paging file:

**DefDBShm\_PROV7** PROISAM configuration shared object.

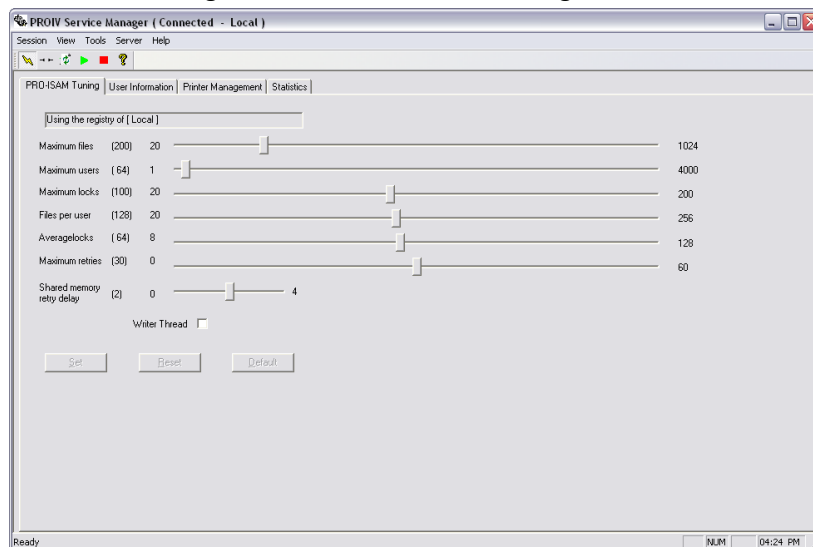
**DefDBPageShm\_PROV7** Page buffer shared object.

PROIV allows 5 page buffers \* MAXFILES. (About 32K per page buffer).

PROISAM configuration settings are accessed in the PROIV Service Manager and are stored in the Windows registry. Once created on Windows, the shared memory objects cannot dynamically grow.

To use different settings, open the PROIV Service Manager (proadmin) by selecting NorthgateArinso...PROIV Version 7...PROIV Virtual Machine from the Microsoft Windows Start menu, make the changes and then restart both the PROIV V7 and PROIV V7 Windows Virtual Machine Servers to ensure the changes take effect.

Screenshot displays the **PROISAM Tuning** tab in the **PROIV Service Manager** taken on a Windows 32-bit machine:



Note: The Writer Thread check box currently has no effect. The functionality is disabled.

The PROISAM settings that can be modified are listed below together with their default settings:

PROISAM Settings	Min	Max	Default
Maximum files	20	1024	200
Maximum users	1	999 (WIN32) 4000 (WIN64)	64
Maximum locks	20	200	100
Files per user	20	256	128
Average locks	8	128	64
Maximum retries	0	60	30
Shared Memory Retry Delay	0	4	2

Setting	Description
MAXFILES	Maximum number of unique open PROIV files on the system.
MAXUSERS	Maximum number of PROIV users, this is irrespective of any client licensing.
MAXLOCKS	Maximum number of PROIV record locks on the system.
USERFILES	Maximum number of unique open files per user.
AVGLOCK	Average size in bytes of a record lock, (i.e. the average key size of locked records).
SHMDELAY	Time to wait in seconds for a shared memory resource (lock) to become available.
SHMRETRY	Maximum number of attempts to obtain a shared memory resource (lock).

### PROISAM Shared Memory Algorithm

Shared memory size is fixed at Virtual Machine startup time on Windows systems. The following formula determines the algorithm that PROISAM uses to calculate the size and allocation of the shared memory segment:

$$\text{size} = \text{OVERHEAD} + \text{CAT\_SIZE} + \text{RABTAB\_SIZE} + \text{LOCK\_SIZE} + \text{FILEID\_SIZE}$$

where:

OVERHEAD is constant and in the order of 10s of bytes.

$$\text{CAT\_SIZE} = \text{MAXFILES} * \text{CAT\_ENTRY\_SIZE}$$

The catalogue's size, which changes depending on the value of MAXFILES, and the machine architecture. On Windows 32-bit machines, the CAT\_ENTRY\_SIZE is 60 bytes, on Windows 64-bit machines CAT\_ENTRY\_SIZE is 72 bytes. The difference is that there are 6 longs in a CAT entry; long is 4 bytes on WIN32 and 8 bytes on WIN64. One CAT is allocated per file open, regardless of how many users open the file.

$$\text{RABTAB\_SIZE} = \text{MAXUSERS} * \text{USERFILES} * \text{RAB\_ENTRY\_SIZE}$$

The Record Access Block (RAB) structure size, which changes depending on the values of MAXUSERS and USERFILES, and the machine architecture. On Windows 32-bit machines, the RAB\_ENTRY\_SIZE is 36 bytes, and on Windows 64-bit machines, the RAB\_ENTRY\_SIZE is 42 bytes. The difference is that there are 3 longs in a RAB entry; long is 4 bytes on WIN32 and 8 bytes on WIN64. One RAB is allocated for every file that each user opens.

$$\text{LOCK\_SIZE} = \text{MAXLOCKS} * (\text{AVGLOCK} + \text{LOCK\_ENTRY\_SIZE})$$

The Record Key Lock Buffers size, which changes depending on the number of MAXLOCKS and AVGLOCK, which is machine-independent. LOCK\_ENTRY\_SIZE is the size of a long. One LOCK is allocated for each record lock taken and is the size of the key being locked, plus the OVERHEAD.

FILEID\_SIZE = MAXFILES \* FILEID\_ENTRY\_SIZE

The shared memory needed by the FileID subsystem, which changes depending on the value of MAXFILES. FILEID\_ENTRY\_SIZE is currently 280 bytes for both WIN32 and WIN64.

The parameters RABTAB\_SIZE and LOCK\_SIZE are not absolute, but dynamically change based on the amount of shared memory available after the FILEID and CAT tables have been allocated. Allocating more RABs makes less memory available for LOCKS and vice versa.

**Note: MAXFILES, MAXUSERS and USERFILES parameters may be subject to operating system and PROIV licensing constraints.**

### Example Sizes of Shared Memory

Example	Memory Size
WIN32 default (MAXUSERS = 64, USERFILES = 128)	360K
WIN64 default (MAXUSERS = 64, USERFILES = 128)	393K
WIN64 (MAXUSERS = 500, USERFILES = 64)	1.29M
WIN64 (MAXUSERS = 1000, USERFILES = 128)	4.95M
WIN64 (MAXUSERS = 1000, USERFILES = 256)	9.84M
WIN64 (MAXUSERS = 2000, USERFILES = 256)	19.6M

## Installing PROIV Version 7

---

PROIV Version 7 is currently available for Windows x86, Windows x86-64, Linux x86, Linux x86-64, Solaris SPARCv10, AIX POWER5 64-bit, HP-UX 11iv3 & 11iv2 and OpenVMS 8.3 IA64. It is distributed as a binary setup executable for all platforms, the only way of installing the product is to run the executable as the root user on a Unix platform, or as a user with Administrator access rights on a Microsoft Windows platform.

The installation process is wizard based; on the Windows platform it is a graphical wizard similar to PROIV Version 6.2, and on the Unix platform by default it runs graphically using X Windows. If you do not have X Windows installed, then it can be run in character mode using the '-console' option on the command line.

Instructions on installing PROIV Version 7 and its different features can be found in the PROIV Version 7 documentation under Topic ID 020015; they can also be found on the PROIV website.

There are important factors to note with the installation of the PROIV Version 7 release:

### Concurrent Version 6 and Version 7

---

The supported and recommended migration path is to have concurrent Version 6 and Version 7 installations. The PROIV Version 7 installation process ensures that it is installed into a separate Version 7 directory, (...\\NorthgateArinso\\PROIV Version 7) and consequently Version 6 and Version 7 can exist on the same machine. Different ports are assigned to the Version 7 services and if the installer finds that a port is already in use, it will assign the next available port to the service.

During the installation process, you are prompted to optionally import certain configuration settings from V6 to V7, these include:

- pro4v6.ini
- Gateway Servers
- Open Client Services
- Web Services
- Web Service Connectors

Select the options that you would like to import as required.

Please note that the import process copies the V6 settings; you must manually edit these settings to ensure that PROIV Version 7 works as expected. For example, Version 6 Licence Server port is '5431' and must be amended to '5437' in PROIV Version 7.

**Note: An application re-gen is NOT required.**

### Earlier Version 7 to Version 7.1

---

You must uninstall any earlier versions of PROIV Version 7 before installing the latest version.

### Installation Location

---

PROIV is now installed to '...\\NorthgateArinso\\PROIV Version 7' directory by default.

### pro4v7.ini File

---

Prior to PROIV Version 7, the PROIV Virtual Machine held its configuration in a file called pro4v6.ini (or pro4v6\_64.ini if the platform was 64-bit). PROIV Version 7 holds the Virtual Machine Configuration in a file called pro4v7.ini and the Virtual Machine Control Panel component manipulates this file. The format is the same, and if required, its contents can be replaced with the contents of your existing pro4v6.ini file. However, references to specific directories in the new installation must be updated.



## Registry Keys

---

Registry keys containing "NorthgateIS" have been replaced with equivalent 'NorthgateArinso' keys. Furthermore, 'V6' references have been replaced by 'V7'.

## Licence Files

---

PROIV Version 7 is shipped with a temporary 3 hour Licence File for all components. However, if you require more than 3 hours, you must obtain PROIV Version 7 licences for all the Version 7 components that you use. Contact your local PROIV support representative for more information.

PROIV Version 7 uses the centralised server based licensing model; it does not use the previous software key implementation. **Do not attempt to use PROIV Version 5/6 keys with PROIV Version 7, they will not work.**

**Furthermore, do not attempt to use the V7 Licence Server to license Version 6.** All PROIV Version 7 components that are licensed have to be configured with the licence server connection information prior to them starting.

The PROIV Virtual Machine has three settings held in the Environment section of the pro4v7.ini file:

LICENCE_SERVER_HOST	Host name of the PROIV licence server.
LICENCE_SERVER_PORT	Port number the PROIV Licence Server is listening on.
LICENCE_SERVER_SERIAL	The serial number this Virtual Machine should present when attempting to acquire a licence.

All the PROIV Version 7 components requiring licensing configuration information can have this configured via the PROIV Control Panel.

**Note: The Licence Server port defined in the evaluation Licence File has changed to port '5437' 'to facilitate the migration from V6. This allows the V7 Licence Server to co-exist on the same system as V6 Licence Server, which usually runs on port '5431'.**

## PROIV Client/Forms Designer Settings

---

During the PROIV Version 7 Virtual Machine/Client or Forms Designer/Client installation, you are prompted if you want to import your Client and Forms Designer settings from Version 6. If you decide to import the settings, it is important to note that the image paths are copied as well. Therefore, if they pointed to the V6 client installation directory, the paths must be manually changed to point to the Version 7 image directories.

## Oracle Instant Client

---

The Oracle 11.2.0 Instant Client is now bundled with PROIV Version 7 and works with Oracle Servers 10.2.0., 11.1.0. and 11.2.0 and applies to Unix platforms only.

Oracle Document 207303.1 has more information on this, please note that a login is required to view it (<https://supporthtml.oracle.com/ep/faces/secure/km/DocumentDisplay.jspx?id=207303.1>).

## Installing Aurora

---

PROIV Aurora is a selectable feature during the PROIV installation process. Ensure that the PROIV Aurora check box on the **Select the features for "PROIV Version 7.1" you would like to install** screen is selected to install it.

### Security Error on First Run

When PROIV Aurora is first run, a security error displays. This is because the security certificate belongs to PROIV Aurora and this will probably not match the security certificate on the server. Your response to this is browser dependent: in Internet Explorer you can ignore this message; in Firefox you must add an exception. In a production environment PROIV recommend that you purchase your own companies certificate from a suitable signing authority.

## Items Supported

---

### Supported Client Platforms

---

#### Microsoft Windows

For a successful PROIV installation on Windows 7, Windows 8 or Windows Server 2008R2, 2012, it is necessary to select the installation file, right-click and select the 'Run as Administrator' option. The installation will then run without being subject to Windows' User Access Control. In addition, the Telnet Client needs to be activated through the Microsoft Windows Control Panel for the PROIV MFC Client.

For further information refer to the **Microsoft Windows Supported Versions** section in this document.

#### Citrix and Microsoft Windows Terminal Services

Please note that any faults found on the CITRIX or Microsoft Windows Terminal Services environment should be reproduced on a standalone client installation prior to reporting to PROIV Support.

### Client and VM Compatibility

---

The following combinations of PROIV Clients and Virtual Machines are compatible:

- The PROIV V7 Client (MFC) is backwardly compatible with earlier versions of the PROIV VM (V6.0, V6.1, and V6.2)
- The PROIV V6 Client (MFC and Open Client) is not forwardly compatible with PROIV V7 VM.
- PROIV Version 7 Open Client is not backwardly compatible with earlier versions of the PROIV VM.

### Supported Web Browsers

---

#### PROIV Control Panel and PROIV Open Client

PROIV Control Panel and PROIV Open Client have been tested on the following web browsers (excluding tablet devices) as of the date of this document publication:

Browser	Platform	Versions
Microsoft Internet Explorer	Microsoft Windows	10,11
Mozilla Firefox	Microsoft Windows	35
Google Chrome	Microsoft Windows	45
Safari	Microsoft Windows	5.1.7
Safari	Lion/Snow Leopard	6.0.1

While other web browsers may work with PROIV, they are not tested against or supported. Also note that new versions of browsers are released on a regular basis and may be updated after the release of the current PROIV version.

Internet Explorer is supported when running in the same Document Mode as the version of the browser itself.

#### PROIV Aurora

PROIV Aurora is supported on the following web browsers as of the date of this publication.

Browser	Platform	Versions
Microsoft Internet Explorer	Microsoft Windows	10,11
Mozilla Firefox	Microsoft Windows	41

Google Chrome	Microsoft Windows	45
Safari	Microsoft Windows	5.1.7
Safari	Lion/Snow Leopard	6.0.1

---

While other web browsers may work with PROIV, we do not test against them or support them. Also note that new versions of browsers are released on a regular basis and may be updated after the release of the current PROIV version.

Internet Explorer is supported when running in the same Document Mode as the version of the browser itself.

### Open Client on Tablet Devices

The devices and browser versions currently tested and supported are as follows.

Tablet	Browser	Version
iPad IOS 7.0	Safari	The version installed with IOS 7.0
	Chrome	23.0.1271
Samsung Galaxy Note 10.1 (Android 4.40)	Chrome	18.0.1025464
	FireFox	16.0.2

## Prerequisites

---

The following sections outline the PROIV Version 7 prerequisites by operating system, and they cover:

- Supported versions
- The installation process which includes pre-installation tasks, and any important steps necessary for the installation.

## Installation Process

---

This section details the installation steps that are required to successfully install PROIV on the platform. It lists the pre-installation steps including the minimum requirements that must be met before you can install PROIV, and any patches that must be applied to the O/S.

## Supported Java Version for PROIV Version 7.1.53.0 and beyond

---

Up to version 7.1.46.0 PROIV only supported Java 6, from version 7.1.53.0 PROIV now supports both Java 6 and Java 7 runtimes on UNIX platforms. Where Java 7 is available for a given Unix platform the PROIV installer has been updated to search for Java 7 before Java 6, and will choose it in preference to Java 6 should it be found.

The Windows distribution continues to bundle Java 6, however it is possible to use Java 7 on the Windows platform, for further details see the Windows section of this document.

Note that Java 8 has not been tested and is not supported.

## C++ Standard Template Libraries

---

PROIV Version 7 makes use of the C++ Standard Template Library (STL) in several of the new product components. The PROIV Virtual Machine has a dependency on these libraries being present in order to run. In most cases the libraries are installed by default with the base operating system, however sometimes they are not. The tables below list the versions of the STL used by PROIV in testing, and where patches or runtime distributions may be obtained from.

The Installation Processes section in this document contains tables which outline the minimum version of Java and the C++ Standard Template Libraries (STL) required to run PROIV Version 7.

# HP-UX

---

## Supported Versions

---

O/S Version	Platform	Min O/S	Max O/S	CISAM 7.26	Oracle 11gR1	Oracle 11gR2
HP-UX (64-bit)	Itanium 2	11.31 HP-UX 11i v3	11.31 HP-UX 11i v3	Yes	Yes	Yes

## Installation Process

### Minimum Java Requirements

---

Platform	O/S Version	Minimum Version	Notes
HP-UX (ia64)	11.31 (HP-UX 11i v3)	Version 6 Update 4 (Build 1.6.0_04)	Java 7 supported see search paths below, available from HP website at <a href="http://h20392.www2.hp.com/portal/swdepot/displayProductInfo.do?productNumber=HPUXJDKJRE60">http://h20392.www2.hp.com/portal/swdepot/displayProductInfo.do?productNumber=HPUXJDKJRE60</a>

### Java Environment Variables and Search Paths

---

It is important to check whether your computer is running a 32-bit or a 64-bit Java version before you install PROIV. For example, if you select to run a PROIV 64-bit installation, you must ensure that the installed version of Java is also 64-bit. Java for the HP-UX platform ships with both 32-bit and 64-bit derivatives in the same software distribution; when Java is executed the system determines which derivative to use based on a command line switch. When the PROIV setup runs, it automatically detects the Java architecture and sets up the correct command line switch for the Java Server components of the PROIV distribution.

### HP-UX IA64 – HP Java (ignores PA-RISC Java installations)

---

PROIV checks the following environment variables and search paths in the installation process.

#### Environment variables:

The following environment variables are checked in an effort to locate a version of Java.

JAVA\_HOME - is the environment variable which specifies where the Java Runtime Environment is located.

JAVAHOME - is the environment variable which specifies where the Java Runtime Environment is located.

JDKHOME - is the environment variable which specifies where the Java Development Kit is located.

#### Paths:

The installation searches for directories based on regular expression pattern matching in an effort to locate a version of Java. The following sets of searches are used:

```

/opt/java7/jre          /usr/*[jJ]2[sS][Ee]*          /opt/*[jJ][rR][eE]*
/opt/java7             /usr/*[jJ]2[sS][Ee]*/jre     /usr/*[jJ][aA][vV][aA]
/usr/*[jJ][rR][eE]*7* /usr/*[jJ]2[rR][Ee]*          ]*
/opt/*[jJ][rR][eE]*7* /opt/*[jJ]2[sS][Ee]*          /opt/*[jJ][aA][vV][aA]
/usr/*[jJ][dD][kK]*7*/jre /opt/*[jJ]2[sS][Ee]*/jre     ]*
/opt/*[jJ][dD][kK]*7*/jre /opt/*[jJ]2[rR][Ee]*          /usr/*[jJ][aA][vV][aA]
/usr/*[jJ][aA][vV][aA]*7* /usr/*[jJ][dD][kK]*/jre     ]*/*[jJ]2*
/opt/*[jJ][aA][vV][aA]*7* /opt/*[jJ][dD][kK]*/jre     /opt/*[jJ][aA][vV][aA]
                               /usr/*[jJ][dD][kK]*          ]*/*[jJ]2*
                               /opt/*[jJ][dD][kK]*          /opt/*[jJ]2*
                               /usr/*[jJ][rR][eE]*          /usr/*[jJ]2*

```

```

/opt/java6/jre
/opt/java6
/usr/*[jJ][rR][eE]*6*
/opt/*[jJ][rR][eE]*6*
/usr/*[jJ][dD][kK]*6*/jre
/opt/*[jJ][dD][kK]*6*/jre
/usr/*[jJ][aA][vV][aA]*6*
/opt/*[jJ][aA][vV][aA]*6*

```

## Minimum C/C++ Standard Template Libraries Requirements

---

Platform	O/S Version	Notes
HP-UX (ia64)	11.31	Bundled with the O/S but patches are available at: <a href="http://h71028.www7.hp.com/enterprise/w1/en/os/hpux11i-v3-overview.html">http://h71028.www7.hp.com/enterprise/w1/en/os/hpux11i-v3-overview.html</a>

## Required Patch

---

The IA64 port requires the following patch in order to start the PROIV Virtual Machine:

```
PHCO_40381 11.31 diskowner(1M) cumulative patch
```

Also note that this platform required PROIV version 7.1.58.1 not 7.1.58.0.

## Installation Tasks

---

Follow these steps when performing a new install PROIV on HP-UX:

1. To install PROIV on a Unix platform, run the executable as the root user.

## File System Support

---

PROIV is not supported on shared file systems such as SAMBA (SMB/CIFS), or NFS

# IBM AIX

---

## Supported Versions

---

O/S Version	Platform	Min O/S	Max O/S	CISAM 7.26	Oracle 11gR1	Oracle 11gR2
AIX 6.1	IBM pSeries	TL4	TL8	Yes	Yes	Yes
AIX 7.1	IBM pSeries	TL2	TL2	Yes	Yes	Yes

**Note: AIX (32-bit) is no longer supported by PROIV.**

## Installation Process

### Minimum Java Requirements

---

Minimum Version	Notes
Version 6 (64-bit only)	Java 7 is supported. Available from <a href="http://www.ibm.com/developerworks/java/jdk/aix/service.html">http://www.ibm.com/developerworks/java/jdk/aix/service.html</a>

### Java Environment Variables and Search Paths

---

PROIV is only supplied as a 64 bit distribution on AIX, it is important that you ensure that the installed version of Java is also 64-bit.

PROIV checks the following environment variables and search paths in the installation process.

#### Environment variables:

The following environment variables are checked in an effort to locate a version of Java.

JAVA\_HOME - is the environment variable which specifies where the Java Runtime Environment is located.

JDKHOME - is the environment variable which specifies where the Java Development Kit is located.

#### Paths:

The installation searches for directories based on regular expression pattern matching in an effort to locate a version of Java. The following sets of searches are used:

```
/usr/java7_64/jre  
/usr/java7*_64/jre  
/usr/jdk_base/jre
```

```
/usr/java6_64/jre  
/usr/java6*_64/jre
```

## Minimum C/C++ Standard Template Libraries Requirements

---

O/S Version	Minimum Version	Notes
AIX 6.1	XLC++Runtime	Available for download at
AIX 7.1	Version 12.1	<a href="http://www-01.ibm.com/support/docview.wss?uid=swg24033340">http://www-01.ibm.com/support/docview.wss?uid=swg24033340</a>

---

## File System Support

---

PROIV is not supported on shared file systems such as SAMBA (SMB/CIFS), or NFS

## Installation Tasks

---

Follow these steps when performing a new install PROIV on AIX:

1. To install PROIV on a Unix platform, run the executable as the root user.

Follow the PROIV Installation Wizard. For further details please refer to Help Topic ID 020015 in the PROIV Online Documentation.



# Linux

---

## Supported Versions

---

Distribution	Platform	CISAM 7.26	Oracle 11gR1	Oracle 11gR2	Reality 14.0.0.0231 (Non ODBC)	PostgreSQL 9.1
Linux Kernel 2.6	Intel x86	Yes	Yes	Yes	Yes	Yes
Linux Kernel 2.6	x64 (AMD64 / EM64T)	Yes	Yes	Yes		Yes

## PostgreSQL and unixODBC

---

All Unix versions of PROIV Version 7 which support the PostgreSQL database require that unixODBC be installed and the libunixODBC shared library can be located by the LD\_LIBRARY\_PATH environment variable. Without this shared library the PROIV Virtual Machine will not start.

PROIV has experienced several problems where versions of unixODBC and psqldb have been used with PROIV which have been built with incorrect header files. It is important that the correctly built versions of unixODBC and associated psqldb driver are installed otherwise PROIV will not operate correctly.

PROIV supports PostgreSQL Version 9 and requires unixODBC 2.2.14, it also requires that the PostgreSQL ODBC driver have been built against unixODBC 2.2.14 source code.

## unixODBC Configuration

---

If you encounter an 'unable to find libodbc.so.x' error message, ensure that the following settings are correctly configured:

The following entry must be in the appropriate section of the /etc/odbcinst.ini file

```
Driver = /usr/lib64/psqldb.so
```

The section is defined in the odbc.ini file in the Required Database section as:

```
DRIVER = PostgreSQL
```

where PostgreSQL is the section name in /etc/odbcinst.ini file.

## Minimum Java Requirements

---

Distribution	Platform	Minimum Version	Notes
Linux 2.6	Intel x86	Version 6 Update 11 (Build 1.6.0_11)	Java 7 is supported. PROIV only verify against Oracle supplied Java Runtime Environments. If during the installation process, a non-Oracle Java RE is detected, the PROIV installation aborts. Oracle Linux JRE available from <a href="http://www.java.com/en/download/manual.jsp">http://www.java.com/en/download/manual.jsp</a> Minimum versions are subject to change during the QA process.
Linux 2.6	x86-64 (AMD64 / EM64T)	Version 6 Update 22 (Build 1.6.0_22)	See note above.

## Java Environment Variables and Search Paths

It is important to check whether your computer is running a 32-bit or a 64-bit Java version before you install PROIV. For example, if you select to run a PROIV 64-bit installation, you must ensure that the installed version of Java is also 64-bit.

PROIV checks the following environment variables and search paths in the installation process.

### Environment variables:

The following environment variables are checked in an effort to locate a version of Java.

JDK\_HOME - is the environment variable which specifies where the Java Development Kit is located.

JAVAHOME - is the environment variable which specifies where the Java Runtime Environment is located.

JAVA\_HOME - is the environment variable which specifies where the Java Runtime Environment is located.

### Paths:

The installation searches for directories based on regular expression pattern matching in an effort to locate a version of Java. The following sets of searches are used:

```

/usr/*[jJ][rR][eE]*1*7*      /usr/*[jJ][dD][kK]*/jre      /usr/j2sdk1.7.0
/opt/*[jJ][rR][eE]*1*7*      /opt/*[jJ][dD][kK]*/jre      /usr/local/jdk1.7.0
/usr/*[jJ][dD][kK]*1*7*/jre  /usr/*[jJ][dD][kK]*          /opt/jdk1.7.0
/opt/*[jJ][dD][kK]*1*7*/jre  /opt/*[jJ][dD][kK]*          /usr/java/jdk1.7.0
/usr/*[jJ][aA][vV][aA]*1*7*  /usr/*[jJ][rR][eE]*          /usr/jre1.7.0
/opt/*[jJ][aA][vV][aA]*1*7*  /opt/*[jJ][rR][eE]*          /usr/local/jre1.7.0
/usr/*[jJ][sS][Ee]*          /usr/*[jJ][aA][vV][aA]*      /usr/java/jre1.7.0
/usr/*[jJ][sS][Ee]*/jre      /opt/*[jJ][aA][vV][aA]*      /opt/jre1.7
/usr/*[jJ][rR][Ee]*          /usr/*[jJ][aA][vV][aA]*/*[jJ]* /opt/jre1.7.0
/opt/*[jJ][sS][Ee]*          /opt/*[jJ][aA][vV][aA]*/*[jJ]*
/opt/*[jJ][sS][Ee]*/jre      /opt/*[jJ]*
/opt/*[jJ][rR][Ee]*          /usr/*[jJ]*

```

```

/usr/*[jJ][rR][eE]*1*6*      /usr/j2sdk1.6.0
/opt/*[jJ][rR][eE]*1*6*      /usr/local/jdk1.6.0
/usr/*[jJ][dD][kK]*1*6*/jre  /opt/jdk1.6.0
/opt/*[jJ][dD][kK]*1*6*/jre  /usr/java/jdk1.6.0
/usr/*[jJ][aA][vV][aA]*1*6*  /usr/jre1.6.0
/opt/*[jJ][aA][vV][aA]*1*6*  /usr/local/jre1.6.0
                               /usr/java/jre1.6.0
                               /opt/jre1.6
                               /opt/jre1.6.0

```

## Minimum C/C++ Standard Template Libraries Requirements

---

Distribution	Platform	Minimum Version	Notes
Linux 2.6	Intel x86	libstdc++ 3.4.6-11 glibc 2.3.4-2.43	Verified against Linux Kernel Version 2.6.9. Minimum versions are subject to change during the QA process.
Linux 2.6	x86-64 (AMD64 / EM64T)	libstdc++ 4.1.2-48	Verified against Linux Kernel Version 2.6.18 with glibc 2.5-49.

## File System Support

---

PROIV should be installed on an EXT2, EXT3, or EXT4 file system. No other file system (FAT, NTFS, VERITAS, ReiserFS, etc.) is currently validated. In particular, file systems which allow simultaneous access from two or more instances of operating systems should not be used. PROIV is not supported on shared file systems such as SAMBA (SMB/CIFS), or NFS. For more information, please contact PROIV Support.

## Additional Information

---

If you have SELinux enabled you may have problems connecting to Oracle. A message similar to the following is written to the `/var/log/messages` file:

```
Mar 3 08:47:42 hostname setroubleshoot: SELinux is preventing $PROIV_HOME/pro
from loading $ORACLE_HOME/lib/libnnz10.so which requires text relocation.
```

To fix this you need to allow the use of shared libraries with text relocation. This can be done globally to the whole system, or you can individually add the label "textrel\_shlib\_t" to the shared libraries that require it. Please refer to the documentation of your Linux distribution for further information on how to configure SELinux.

## Installation Tasks

---

Follow these steps when performing a new install PROIV on Linux:

1. To install PROIV on a Linux platform, run the executable as the root user.
2. Follow the PROIV Installation Wizard. For further details please refer to Help Topic ID 020015 in the PROIV Online Documentation.

# Microsoft Windows

## Windows 32-bit Supported Versions

O/S Version	Platform	Min O/S	Max O/S	Oracle 11gR1	Oracle 11gR2	SQL Server 2008	SQL Server 2012	Reality 14 Note 1	Postgres SQL 9.1
Windows Server 2008 R1	Intel x86	Base	SP2	Yes	Yes	Yes	Yes	*	Yes
Windows 7	Intel x86	SP1	SP1	No	Yes	Yes	No	*	
Windows 8	Intel x86	Base	Base Note 2		Yes	Yes		*	

### Notes

1. The use of Reality with PROIV is only supported if both PROIV and Reality are supported on your target platform. To ensure your version of Windows is supported by Reality, refer to the Reality Online Documentation.
2. Windows 8.1 is not validated at this time, please check the PROIV website for up to the minute certification of PROIV on this platform.

## Windows 64-bit Supported Versions

O/S Version	Platform	Min O/S	Max O/S	Oracle 11gR1	Oracle 11gR2	SQL Server 2008	SQL Server 2012	Reality 14 Note 1	Postgres SQL 9.1
Windows Server 2008 R1	x64	Base	SP2	Yes	Yes	Yes	Yes	*	No
Windows Server 2008 R2	x64	Base	Base	No	Yes	Yes	Yes	*	No
Windows Server 2012	x64	Base	Base		Yes *		Yes		
Windows 7	x64	Base	Base	No	Yes	Yes	Yes	*	No
Windows 8	X64	Base	Base		Yes *		Yes		

### Notes

1. The use of Reality with PROIV is only supported if both PROIV and Reality are supported on your target platform. To ensure your version of Windows is supported by Reality, refer to the Reality Online Documentation.
2. Access to Oracle 11gR2 on Windows 8 and Windows Server 2012 requires the Oracle 12c client and is not supported with 11gR2 client

### PROIV Windows Client – 32-bit MFC

O/S	Platform(s)	Min O/S	Max O/S
Windows Server 2008 R1	Intel x86, x64	Base	SP2

Windows Server 2008 R2	x64	Base	Base
Windows Server 2012	x64		
Windows 7	Intel x86, x64	Base	SP1
Windows 8	Intel x86, x64	Base	Base

## Installation Process

---

### Visual Studio C/C++ Runtime Redistribution

You should ensure that the Microsoft Visual Studio 2010 C/C++ Runtime redistributable is loaded; this can be found at the following URLs

32 bit - <http://www.microsoft.com/en-gb/download/details.aspx?id=5555>

64 bit - <http://www.microsoft.com/en-gb/download/details.aspx?id=14632>

### Minimum Java Requirements

O/S Version	Minimum Version	Notes
Windows 7	N/A	Java 6 bundled with PROIV installation.
Windows 8		
Windows Server 2008 R1		
Windows Server 2008 R2		
Windows Server 2012		

If necessary it is possible to configure the PROIV Server and Windows Kernel Server to run using an alternative JRE. This should only be done if your application is using SSOs which mandate Java 7. This can be achieved by setting the variable JAVA\_HOME in the Environment section of the pro4v7.ini file to the root directory of the JRE. It is important that if you choose to override the bundled JRE that you do so with one of the same architecture, 64 bit PROIV Server requires a 64 bit JRE, 32 bit PROIV requires a 32 bit JRE; failure to configure the correct combination will result in the PROIV Server failing to load any SSOs or access the lexicon.

e.g

```
[Environment]
:
:
JAVA_HOME= C:\Program Files\Java\jre7
:
:
```

Java 7 has been validated against PROIV 7.1.60.0, although it is not supplied in the installer and should be downloaded and installed separately.

### File System Support

PROIV must be installed onto an NTFS volume. This volume must be local (not mapped or a UNC) and not shared with other Windows systems. Failure to observe this results in file corruption.

For more information, please contact PROIV Support.

## Minimum Windows Interface Requirements

O/S Version	Notes
Windows Server 2008	Server Core is not supported and a full installation of Windows Server 2008 is required for the PROIV installation to run.

## Installation Tasks

Follow these steps when performing a new install PROIV on Microsoft Windows:

1. To install PROIV on a Microsoft Windows platform, you must log on as a user with Administrator access rights.
2. Follow the PROIV Installation Wizard. For further details please refer to Help Topic ID 020015 in the PROIV Online Documentation.

For a successful PROIV installation on Windows 7, 8, Server 2008 and Server 2012 it is necessary to select the installation file, right-click and select the 'Run as Administrator' option. The installation will then run without being subject to Windows' User Access Control.

In addition, the Telnet Client needs to be activated through the Microsoft Windows Control Panel for the PROIV MFC Client.

Also, if you are uninstalling PROIV on Windows 7, it is recommended that you right-click the Uninstall menu option and select the 'Run as Administrator' option. In addition, you must reboot after the uninstall process.

### Windows 7, Permissions on Folders and the pro4v7.ini

On Windows 7 / 8 the pro4v7.ini inherits the permissions of the Windows folder, and its configuration may prevent the PROIV Control Panel from writing to the file. The permissions must be amended to allow the PROIV Control Panel to amend the pro4v7.ini.

Furthermore, users must have the appropriate permissions for any PROIV folders to facilitate a successful uninstallation of PROIV.

## PROIV Windows Server 64-bit Differences

There are important differences between the 64-bit and 32-bit Windows releases of PROIV.

The following information applies to PROIV Windows Server 64-bit release:

- PROIV Service Manager now allows configuration of a maximum of 4,000 users. However, you must ensure the system has adequate resources in order to meet this maximum configuration
- PROIV Virtual Machine for WIN64 will run on Windows Vista, but is not recommended for commercial server deployment.
- PROIV WIN64 executables differ in naming convention from WIN32 executables. For example, 'pro32srv.exe' is called 'prosrv.exe' on WIN64.
- PROIV 32-bit MFC Client is bundled as part of the PROIV Virtual Machine for WIN64 installation.

## Windows 8.1 / Internet Explorer 11

PROIV 7.1.58.0 has not been validated against Windows 8.1. Internet Explorer is, however, supported on Windows 8.0

## Java 7

Java 7 has been validated for running SSOs and the Java-based services on this platform. However, it is not supplied as part of the distribution and must be installed separately. Note that Java7 is required for HTTPS connections to work as of this release. See Known Issues at the end of this document

## **PostgreSQL Version 9**

---

PROIV Windows supports PostgreSQL Version 9.1 Server and requires a minimum PostgreSQL ODBC driver version for psqlodbc.dll of 9.1. PostgreSQL is not supported on Windows 64-bit platforms.

# Sun Solaris (SPARC)

---

## Supported Versions

---

O/S Version	Platform	Min O/S	Max O/S	CISAM 7.26	Oracle 11gR1	Oracle 11gR2
Solaris (64-bit)	SPARC	10	11	Yes	Yes	Yes

## Installation Process

---

### Installing PROIV under a Solaris Zone Environment

PROIV will not install on a Solaris Zone, however it will load within a Solaris LDOM.

### Minimum Java Requirements

O/S Version	Minimum Version	Notes
Solaris 10, 11 64-bit	Version 6 Update 23 (Build 1.6.0_23)	Java 7 only supported on Solaris 10 & 11 Solaris JRE available from Oracle at <a href="http://www.java.com/en/download/manual.jsp">http://www.java.com/en/download/manual.jsp</a>

### Java Environment Variables and Search Paths

PROIV on Solaris requires a 64 bit JRE. PROIV checks the following environment variables and search paths in the installation process.

#### Environment variables

The following environment variables are checked in an effort to locate a version of Java.

JAVA\_HOME - is the environment variable which specifies where the Java Runtime Environment is located.

JAVAHOME - is the environment variable which specifies where the Java Runtime Environment is located.

JDKHOME - is the environment variable which specifies where the Java Development Kit is located.

#### Paths:

The installation searches for directories based on regular expression pattern matching in an effort to locate a version of Java. The following sets of searches are used:

```
/usr/java/jre /usr/*[jJ][aA][vV][aA]*
/usr/java /opt/*[jJ][aA][vV][aA]*
/usr/jdk/latest/jre /usr/*[jJ][aA][vV][aA]*/*[jJ]*
/usr/jdk/latest /opt/*[jJ][aA][vV][aA]*/*[jJ]*
/usr/jdk/jdk1.7*/jre /opt/*[jJ]*
/usr/jdk/jdk1.7* /usr/*[jJ]*
/usr/*[jJ][rR][eE]*1*7*
/opt/*[jJ][rR][eE]*1*7*
/usr/*[jJ][dD][kK]*1*7*/jre
```



```

/opt/*[jJ][dD][kK]*1*7*/jre
/usr/*[jJ][aA][vV][aA]*1*7*
/opt/*[jJ][aA][vV][aA]*1*7*
/usr/*[jJ][sS][Ee]*
/usr/*[jJ][sS][Ee]*/jre
/usr/*[jJ][rR][Ee]*
/opt/*[jJ][sS][Ee]*
/opt/*[jJ][sS][Ee]*/jre
/opt/*[jJ][rR][Ee]*
/usr/*[jJ][dD][kK]*/jre
/opt/*[jJ][dD][kK]*/jre
/usr/*[jJ][dD][kK]*
/opt/*[jJ][dD][kK]*
/usr/*[jJ][rR][eE]*
/opt/*[jJ][rR][eE]*

```

## Minimum C/C++ Standard Template Libraries Requirements

---

O/S Version	Minimum Version	Notes
Solaris 10, 11 64-bit		Bundled with the O/S but patches are available at <a href="http://supporthtml.oracle.com/">http://supporthtml.oracle.com/</a> depending on the specific O/S release level. Minimum shared library patch for v9 is 111711-15 Minimum shared library patch for v10 is 119963-20

**Note:** PROIV 7.1.58.0 and subsequent releases are not supported on Solaris 9.

## File System Support

---

PROIV is not supported on shared file systems such as SAMBA (SMB/CIFS), or NFS.

---

## Release Dates and Versions

**Build 7.1.70.0 - Release Date: 30<sup>th</sup> September 2015 (AIX, Linux, Solaris, Windows)**

---

<b>Environment</b>	<b>Version</b>	<b>Environment</b>	<b>Version</b>
PROIV Active Web	<b>7.1.56.0</b>	PROIV Statistics	<b>7.1.55.0</b>
PROIV Client	<b>7.1.69.0</b>	PROIV Open Client	<b>7.1.69.0</b>
PROIV Control Panel	<b>7.1.57.0</b>	PROIV Virtual Machine	<b>7.1.70.0</b>
PROIV Developer	<b>7.1.49.0</b>	PROIV Virtual Machine Configurator	<b>7.1.56.0</b>
PROIV Gateway Manager	<b>7.1.55.0</b>	PROIV Web Developer	<b>Version 7</b>
PROIV Licence Server	<b>7.1.56.0</b>	PROIV Web Services	<b>7.1.53.0</b>
PROIV Aurora	<b>2.0.66.0</b>		

---

**Build 7.1.67.0 - Release Date: 30<sup>th</sup> September 2015 (HPUX IA64 only)**

---

<b>Environment</b>	<b>Version</b>	<b>Environment</b>	<b>Version</b>
PROIV Active Web	<b>7.1.54.0</b>	PROIV Statistics	<b>7.1.53.0</b>
PROIV Client	<b>7.1.67.0</b>	PROIV Open Client	<b>7.1.67.0</b>
PROIV Control Panel	<b>7.1.55.0</b>	PROIV Virtual Machine	<b>7.1.67.0</b>
PROIV Developer	<b>7.1.49.0</b>	PROIV Virtual Machine Configurator	<b>7.1.55.0</b>
PROIV Gateway Manager	<b>7.1.53.0</b>	PROIV Web Developer	<b>Version 7</b>
PROIV Licence Server	<b>7.1.54.0</b>	PROIV Web Services	<b>7.1.51.0</b>
PROIV Aurora	<b>2.0.66.0</b>		

---

## New Functionality in this Release

### JavaScript Control Maintenance

---

#### Introduction

JavaScript controls have always been able to be used in PROIV screens when rendered in the Open client. In order to import the control specifications into PROIV, an ActiveX control needed to be written, with exactly the same Methods, events and Properties. This would then be written to PROIV using the ActiveX gallery.

This worked well if the application was to be rendered in the mfc client and Open Client, since the function would work in both cases, unchanged. However, for Open Client usage only, the ActiveX control was an unnecessary stage.

The new JavaScript Maintenance module allows the PROIV specifications of a JavaScript control to be manually entered and edited, avoiding the ActiveX requirement.

#### Summary of Usage

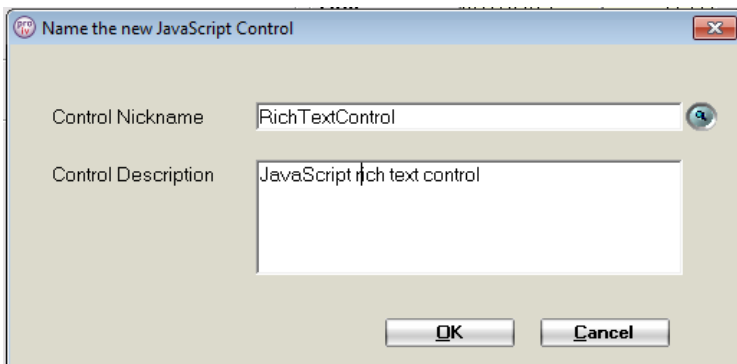
The JavaScript controls are added, maintained and managed by PROIV Developer in the same way as all other top-level PROIV objects (e.g. Tasks, File Definitions).

When included in screen functions, they are still referenced as ActiveX controls.

Only JavaScript controls added manually can be edited using the new feature. ActiveX controls saved from the ActiveX gallery cannot be edited.

#### Adding a JavaScript Control

As for other top level PROIV objects, select 'New JS Control' from the new object menu. This New JS Control window is popped.



Enter the nickname (the name the control is known as in PROIV), and an optional description.

You are then taken into a tabbed folder, to add the rest of the details. This is described in the next section, 'Maintaining a JavaScript Control'.

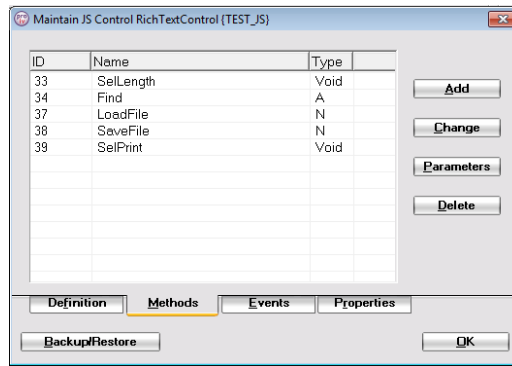
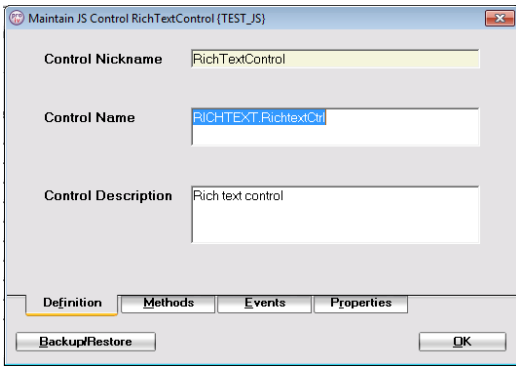
#### Maintaining a JavaScript Control

As for other top level PROIV objects, select 'Open a JS Control' from the open object menu. The Maintain a JS Control window is popped.

The maintenance screen is a folder with 4 tabs:

1. Definition – maintain the actual control name, and the description.

2. Methods – maintain methods, their return types, and any parameters.
3. Events – maintain events and any parameters.
4. Properties – maintain properties and their return types.

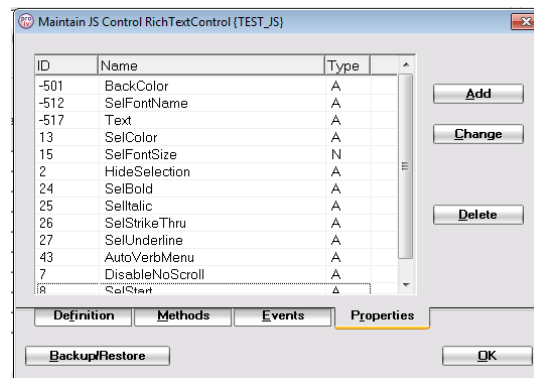
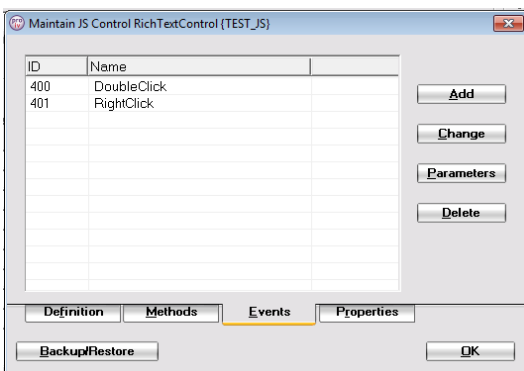


**Definition**

1. Control Name - Enter the real JS Control name (as against the nickname).
2. Control Description – Free text.

**Methods**

- Add, Change or Delete the Control’s methods.
1. ID – the identifier of the method in the JS Control.
  2. Name – the name of the method, as used in PROIV logic (methods, events and properties in a control must all have unique names).
  - 3.Type – the return type of the method. ‘A’lpha, ‘N’umeric or Void for no return value.
  4. Parameters – methods can optionally have input parameters, which must be ‘A’lpha or ‘Numeric’. These are referenced in PROIV interface maps.



**Events**

- Add, Change or Delete the Control’s events.
1. ID – the identifier of the event in the JS Control.
  2. Name – the name of the event, as used in the PROIV control property sheet in functions (methods, events and properties in a control must all have unique names).
  3. Parameters – events can optionally have input parameters, which must be ‘A’lpha or ‘Numeric’. These are referenced in PROIV interface maps.
  4. Events do not have return values, so there is no Type.

**Properties**

- Add, Change or Delete the Control’s properties.
1. ID – the identifier of the property in the JS Control.
  2. Name – the name of the property, as used in PROIV logic (methods, events and properties in a control must all have unique names).
  - 3.Type – the type of the property. ‘A’lpha, or ‘N’umeric.
  4. Properties cannot have parameters.

## Using a JavaScript Control in Screen Functions

JavaScript controls are treated exactly the same as ActiveX controls when referenced in functions. The Control Id combo box in the ActiveX control property sheet will show manually added JavaScript Controls and ActiveX Controls loaded from the ActiveX gallery.

## Managing a JavaScript Control

ActiveX controls could not be edited, so were not available in many PROIV Developer utilities (e.g. the Open dialogue, the Copy, Rename, Delete tool, Booking), but were available in others (e.g. Import and Export). JavaScript controls are fully editable, so are available in all the standard utilities and tools and are protected by Booking and Locking rules in the same way as other top-level objects.

Where only JavaScript controls are available, the screen prompt will show 'JS Controls', and any list or combo box will not display ActiveX Controls. Where both JavaScript Controls and ActiveX Controls are available, the screen prompt will show 'JS/AX Control'.

This enhancement was raised in Call ID EL10645.

## Open Client Timeout

An additional property has been added to the Open Client Message.properties configuration file – "Timeout.timeoutInterval". This property should be set in milliseconds to the same time value as the PROIV Virtual Machine @TIMEOUT setting to ensure that when a timeout occurs within the Virtual Machine that the Open Client will also react without the need for any user interaction.

By setting @TFUNCT to the same function that is executing you can in effect have a screen which appears to automatically refresh its contents at a regular interval as could be achieved in the MFC using the same technique.

## NULL Handling in SQL Server

From 7.1.53 a new environment variable (ODBC\_HANDLE\_NULL) has been introduced to modify the behaviour of PROIV when an empty field is encountered during updates to tables residing on Microsoft SQL Server only. The following applies only when the relevant field in the PROIV file definition corresponds to a SQL Server database column having the char or varchar data type.

The environment variable in conjunction with the 'Null' setting of the PROIV File definition for the field controls whether PROIV sends NULL or a space character to SQLServer in respect of such empty fields.

The resulting behaviour is shown in the table below.

ODBC_HANDLE_NULL Setting	PROIV File Definition Has "Null ?" set	Database Column has "Not Null Set"	Behaviour
Y	Y	Y	SQL Error 366
N	Y	Y	SQL Error 366
N	N	Y	SQL Error 366
Y	N	Y	No Error
Y	Y	N	No Error
Y	N	N	No Error
N	Y	N	No Error
N	N	N	No Error

Note that the SQL Error 366 results from PROIV attempting to insert NULL into a column which does not allow NULLs. The ODBC\_HANDLE\_NULL variable should be set in the [DATABASE] section of the pro4v7.ini file corresponding to the

connection, on which the behaviour noted against the 'Y' settings in the 'ODBC\_HANDLE\_NULL Setting' column of the above table is desired, as follows:-

ODBC\_HANDLE\_NULL=Y

A setting of ODBC\_HANDLE\_NULL=N (or any value other than Y), or omission, results in the behaviour noted against the 'N' settings in the 'ODBC\_HANDLE\_NULL Setting' column of the above table and also reflects the behaviour prior to PROIV Version 7.1.53.0

## Rollback Errors

---

As of release (7.1.58.0) certain fatal errors which did not cause a rollback have now had their behaviour changed

If PROIV detects one of these errors, an automatic Rollback will be issued.

003 SECURITY VIOLATION  
004 SECURITY VIOLATION - INVALID LEVEL  
005 TOO MANY FILES OPEN (RECORD BUFFER OVERFLOW) - FILE: filename  
006 TOO MANY FILES OPEN (LOGICAL TABLE OVERFLOW) - FILE: filename  
010 FUNCTION EXCEEDS WORKSPACE  
011 ERROR IN ASSIGNING SORT FILE  
013 UNDEFINED VALUE VARIABLE - variable  
014 PLEASE CREATE FILE - filename  
015 SUBSCRIPT VALUE NOT WITHIN RANGE OF DIMENSION  
017 ERROR IN READING FILE - filename...  
018 ERROR IN WRITING FILE - filename...  
019 ERROR IN DELETING RECORD IN FILE - filename...  
024 OPERATION IGNORED - DIVISION BY ZERO  
028 INVALID - EXPONENT OUT OF RANGE  
029 RESULT TOO LARGE IN ARITHMETIC OPERATION  
035 DATA NOT ALPHA IN FILE - filename  
036 DATA NOT NUMERIC IN FILE - filename  
037 BUFFER LIMIT EXCEEDED FOR RECORD IN FILE - filename  
038 NOT ENOUGH DATA IN BUFFER - EXTERNAL FILE- filename  
040 NUMERIC CONVERSION ERROR - EXTERNAL FILE - filename  
048 ERROR IN CLEARING FILE - filename  
049 ERROR IN CREATING FILE - filename  
050 ERROR IN DELETING FILE - filename  
054 ERROR IN OPENING FILE - filename...  
107 MENU FUNCTIONS CANNOT BE EXECUTED  
108 SCREEN FUNCTIONS CANNOT BE EXECUTED  
124 FILE SECURITY VIOLATION IN FILE - filename  
140 CANNOT SUCCESSFULLY OPEN PRINT FILE - file  
157 MAXIMUM PAGING SEQUENCE NUMBER EXCEEDED  
161 ERROR IN RENAMING FILE  
162 ERROR IN ALIASING FILE  
163 INSUFFICIENT MEMORY TO LOAD FUNCTION'S LOGIC  
164 MUST REGEN - LOGIC'S SIZE IS WRONG  
172 PRINT FILE ERROR –  
176 ATTEMPT TO PERFORM ZERO TO THE POWER ZERO

182 EXTERNAL SUBROUTINE NAME NOT FOUND IN NAMES TABLE - name  
183 UNDEFINED LOGICAL SCREEN CALLED LS#- number  
190 DATE OUTSIDE SUPPORTED RANGE IN FILE - filename  
191 CANNOT RESTRICT KEY VALUES USING SEL-xxx FOR REALITY FILE filename  
200 INTERNAL KERNEL ERROR - REGEN FUNCTION  
204 SQL SUPPORT NOT AVAILABLE  
205 UNABLE TO ALLOCATE STORAGE FOR SQL CONTROL BLOCKS  
206 SQL STATEMENT SETS EXCEEDED  
207 INVALID 'HOST' VARIABLE  
210 BRANCH FROM FIELD %1 TO %2 MAKES AN INFINITE LOOP  
211 KERNEL IS NOT CONFIGURED FOR OPTION – option  
224 INVALID DIRECTORY  
250 FAILED TO GET SEMAPHORE - OPERATING SYSTEM ERROR  
251 FAILED TO GET SHARED MEMORY - OPERATING SYSTEM ERROR  
252 SHARED MEMORY ALLOCATION ERROR - OPERATING SYSTEM ERROR  
253 WARNING - SEMAPHORE OVERFLOW - OPERATING SYSTEM ERROR  
254 SEMAPHORE ACCESS ERROR - OPERATING SYSTEM ERROR  
255 SORT KEY TOO LONG  
256 COMBOBOX MEMORY ERROR  
300 SQL ERROR: insufficient memory for cursors  
301 UNDEFINED DATABASE  
353 SQL ERROR: DUPLICATE KEY INDEX FOUND IN FILE  
354 SQL ERROR: UPDATE/INSERT NULL VALUES ON NOT NULL COLUMN  
356 SQL ERROR: Application Constraint Integrity Error  
357 SQL ERROR: APPLICATION TRANSACTION INTEGRITY ERROR

360 through to 399 Various SQL related errors.

556 Key length exceeded Maximum  
603 INTERNAL KERNEL ERROR - INVALID PRO-IV NUMERIC DATA - %1  
630 XML TAG NAME CONTAINS INVALID CHARACTER  
631 XML TAG NAME IS RESERVED  
656 ActiveX not registered  
657 ActiveX not minimum version  
660 INVALID GLOBAL FUNCTION CALLED - %1  
661 TYPE MISMATCH IN GLOBAL FUNCTION CALL FOR FUNCTION NAME –  
662 PARAMETER MISMATCH FOR THE GLOBAL FUNCTION –  
663 CANNOT AUTO-RESET GLOBAL FUNCTION. FUNCTION NAME - %1

664 through to 669 Function Call errors

711 LONG STRINGS NOT SUPPORTED BY LOGIC OPERATION  
722 CANNOT ACCESS HOST FILE FOR LOADING OR STORING A BLOB %1  
723 THE FILE CONTAINING THE BLOB HAS NOT BEEN READ  
724 THERE IS NOT ENOUGH SPACE FOR BLOB PROCESSING %1  
725 AN ERROR OCCURRED WHEN READING OR WRITING A BLOB %1  
734 NUMERIC CONVERSION ERROR IN PARAM. OF EXTERNAL SUBROUTINE - %1, %2  
830 UNABLE TO CREATE SSO %1  
831 UNABLE TO INITILIZE OR CALL JVM  
832 SSO PARAMETER %1 IS UNDEFINED



833 SSO SET PROPERTY %1.%2 FAILED  
834 SSO GET PROPERTY %1.%2 FAILED  
835 SSO METHOD CALL %1.%2 FAILED  
836 MISMATCHED SSO PARAMETER COUNT IN FUNCTION CALL  
837 SSO ERROR: Unspecified  
838 SSO\_JARPATH CONTENTS INVALID  
839 SSO METHOD CALL %1.%2 RETURNED UNEXPTECTED TYPE  
899 INSUFFICIENT MEMORY TO DEBLOCK RECORD

900 through to 908 various memory full errors

909 FUNCTION NESTING TOO DEEP  
910 ATTEMPTED TO GEN A LOGIC WITH TOO MANY PARAMETERS  
911 UNDEFINED GEN ERROR  
912 COUNTER OVERFLOW DURING GEN

## EOL Notifications

---

Please see important announcement regarding PROIV 7.1 at [http://www.proiv.com/press\\_room/496\\_proiv\\_version\\_7\\_end\\_of\\_life\\_statement](http://www.proiv.com/press_room/496_proiv_version_7_end_of_life_statement)

### HP OpenVMS Alpha

---

PROIV Version 6 attained Production Release status on 3<sup>rd</sup> March 2008. Support for PROIV Version 5.5 on OpenVMS ceased on 1<sup>st</sup> January 2010. Support for PROIV Version 6 ceased on 1<sup>st</sup> January 2012.

**There are no plans to release PROIV Version 7 for this platform.**

### HP-UX

---

Support of PROIV V6 on the HP-UX 11i v1 (11.11) on Itanium and PA-RISC platforms ceased on 31<sup>st</sup> December 2013. Support of PROIV V6 on the HP-UX 11i v2 (11.23) on Itanium and PA-RISC platforms ceased on 31<sup>st</sup> December 2013.

## Items Fixed

---

The Items Fixed section includes packages that have gone into builds, the tested and passed between the V7 PROIV release (v7.1.58.0) and this release (v7.1.70.0).

### PROIV Release 7.1.58.0

---

Ref No	Description
PV-1762	Clicking on the scrollbar of an active paging screen causes OC session to exit

---

### PROIV Release 7.1.58.1

---

Ref No	Description
	For HPUX IA64 Only

---

### PROIV Release 7.1.58.2

---

Ref No	Description
PV-1799	Allow popup windows on Open Client to open at their maximum size

---

### PROIV Release 7.1.58.3

---

Ref No	Description
PV-1827	Allow the administrator to disable the Open Client popup window moving and resizing
PV-1759	Licence Summary information in Control Panel

---

## PROIV Release 7.1.58.4.0

---

Ref No	Description
PV-1825	AutoResizePagingHeight occasionally miscalculates screen height
PV-1888	Client.Send transfers partial content of medium to Large files in Open Client.

---

## PROIV Release 7.1.64.0

---

Ref No	Description
PV-1925	PDF transformed report attachment to Email and sent via SSO causes error on AIX
PV-1924	OC - Window content jumps on mouse-over in Chrome
PV-1920	OC - Certain paging fields non-functional / navigable
PV-1919	OC - Auto sequence corrupted after escape and re-add
PV-1917	OC - Filling a field with data in a local window causes spin
Pv-1916	ActiveX Description faults MFC client on Windows 8
PV-1914	SiteID is not shown in kernel tracing
PV-1904	MFC Client Issue - Telnet not showing what has been typed
PV-1903	SET_CURR not working as expected
PV-1740	Unable to access Aurora menu options
PV-1669	OC Secure Connections are not being processed correctly - preventing a secure login from being created
PV-1659	File definition can be created with no variable name
PV-1947	Clipped Icon in window is resized instead of being clipped
PV-1941	Icon text sometimes displays as an ellipses rather than the full text
PV-1953	IE throws an Exception if there is an icon off screen
PV-1005	Existing JS control Methods/Events/Properties not appears during adding JS control to a function.

---

## PROIV Release 7.1.70.0 (7.1.67.0 for HPUX IA64)

---

Ref No	Description
PV-1636	Printing from Task loses spooler command
PV-1715	Open Client - Insert [Ctrl + F5] into paging screen allowed only once
PV-1716	FNKEYSTACK is not working in OC
PV-1757	Single click list box is re-sizing the columns after a UMSG
Pv-1758	Clicking the scroll bar on a paging screen does not show the count of records
PV-1824	WINLOCATE window bigger than screensize causes kernel crash
PV-1898	Blank Date In Drop Down List Erasing Unrelated Field In Calling Function in both MFC and OC
PV-1948	Clipped Icon in window is resized instead of being clipped
PV-2002	Control Panel in Chrome Saves and replays "Stop License Server"

---

## PROIV Developer 7.1.47.0

---

Ref No	Description
PV-1789	Task Linkage - the same function appears many times as the start function in the linkage view
PV-1791	Functions exported from 7.1.41.0 corrupted when imported to later version

## PROIV Developer 7.1.49.0

---

Ref No	Description
PV-1548	Help topic 510083 does not refer to the correct objects
PV-1789	Task Linkage - the same function appears many times as the start function in the linkage view

## Known Issues

---

### PROIV Service Manager and Microsoft Windows KB982802 and KB2360937 Patches

---

If you apply the Microsoft Windows KB982802 patch to a Windows machine running the PROIV Virtual Machine or a PROIV Service Manager (PROADMIN), then all previous versions of the PROIV Service Manager do not work.

A new version of the PROIV Service Manager has been created to deal with this issue and the connection between the PROIV Service Manager and the PROIV Virtual Machine (pro32srv.exe) has also been amended. Therefore, both PROADMIN and pro32srv.exe must be updated as a pair. The default connection has been changed to prevent the new PROADMIN from connecting to an old Virtual Machine. However, if the Virtual Machine is specified, then an attempt is made to connect to it, resulting in the Virtual Machine crashing if it is an earlier release of the Virtual Machine.

**WARNING: If the new version of PROADMIN attempts to connect to a previous version of the PROIV Virtual Machine, it will crash the Virtual Machine.**

There is also an issue with the Microsoft Windows KB2360937 patch. Please be advised that the PROIV Service Manager does not function correctly with this patch installed.

### Number of PROISAM files exceeded

---

The number of PROISAM files accessed by PROIV has increased over recent releases and you may encounter an error message when running PROIV, particularly when you have selected to install and run Aurora.

#### Error Message

On Microsoft Windows, the following error message may occur when running PROIV Developer after a new installation:

```
'054 - ERROR IN OPENING FILE $PROPATH/vipbm01 (10099)'
```

Note that the file name in the message above may vary.

In addition, the following entry is made in the Windows Application Event log:

```
PROISAM event 45
```

This indicates that the Files per User limit has been exceeded.

### Resolution

To resolve this issue, it is recommended that you amend the Files per User and Maximum Files values in the PROIV Service Manager.

To set the Files per User and Maximum Files values, follow these steps:

1. Open the **PROIV Service Manager** (proadmin) by selecting **NorthgateArinso...PROIV Version 7...PROIV Virtual Machine** from the **Microsoft Windows Start** menu.
2. On the **PRO-ISAM Tuning** tab, move **Files per User** slider to a larger value. The default is 128 but 200 is a recommended value.
3. Move **Maximum files** slider according to the following recommendations. The value is a system-wide value, i.e. all PROISAM files open at any one time, regardless of program or user. On Unix platforms, it is recommended to set Maximum Files value to match the total number of PROISAM files on the system and then add an extra 20% to 50%. The larger the number of files on the system, the lower the percentage. Remember to include sort files when calculating this value. There is a Maximum Files upper limit of 1024 on Microsoft Windows.
4. Restart the PROIV V7 and PROIV V7 Windows Virtual Machine Servers to ensure the changes take effect.

### Issues with Build Process when PROIV Developer not upgraded to latest version

---

If you are running an older PROIV Developer with the latest Kernel, you may encounter the following error message when you attempt to build/gen your functions:



This is because you are missing two files (**oaesmap.pro** and **oaesfun.pro**) that have been added to most recent PROIV Developer (v7.1.23.0) to enable the OpenAjax Event Publish and Subscribe functionality. It is recommended that you upgrade to the latest PROIV Developer, if that is not possible, you must copy the missing files into your development environment.

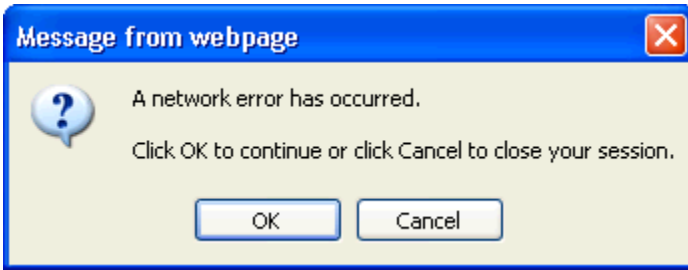
To resolve this issue, follow these steps:

1. 'isin' PROIV Developer into a different directory.
2. Copy the **oaesmap.pro** and **oaesfun.pro** into your development environment.

## Open Client browser messages displayed on timeout

---

If an Open Client or Aurora session times out the user will see three messages prior to the session closed time out message.



A retry feature has been introduced to the Open Client which allows greater resilience to network errors. On encountering a network error rather than disconnecting the Open Client session it now retries the HTTP request and carries on if the retry succeeds.

This feature is, in this release, turned on by default, this will be changed to default to be off in future releases.

For information on how to change these settings, please see the PROIV forum (<http://forum.proiv.com>) topic on this subject, or alternatively contact your PROIV Support office for assistance.

## Secure Connections to Web Applications may not work

---

Due to security issues found within Java 6, secure connections (HTTPS) to the Java-based Web Applications may not work with this release.

If this proves a problem with your installation then you will need to upgrade to Java 7 and configure the Web Applications to use this. SSO (Server Side Objects) are unaffected by this

Each Web Application has a file conf/wrapper.conf

This specifies the location of the command used to start Java

For instance, for Aurora, on a Windows setting the file should be similar to

```
#####  
# Wrapper Properties  
#####  
# Java Application  
wrapper.java.command=C:\Program Files\Java\jdk1.7.0_17\bin\java
```

You must set the path appropriately for your system.

The Open Client and Aurora server as installed contain self-signed SSL certificates supplied by ourselves.

If you need to manually update the self signed security certificates that are provided with PROIV this is simply a case of replacing the "auroraKS" keystore file for the required PROIV Version 7 web applications. The "auroraKS" key store file is located in "conf" directory under each of the web applications - Open Client and Aurora i.e. "...NorthgateArinso\PROIV Version 7\Aurora\conf\auroraKS"

Each server must be restarted after this either of the changes above.